

This is a header page for the
July 2020

Edition of

The Kentish Voice

It will enable you to view the
edition as you would read it
in hardcopy

When you open the PDF
select view 2 pages at a time.



THE Kentish VOICE

A Community Newspaper produced by Thema Pty Ltd
www.thekentishvoice.com.au

Serving over
6000 residents in
Kentish
**DELIVERED
FREE**
ISSN 2202-2813
Established 2013
Issued Monthly
Vol. 8 No. 1
JULY 2020

KENTISH RE-AWAKENS



We may not be able to leave the Stae but there is so much to see her on our doorstep! Sheffield Visitor Information Centre is now open on weekdays (Monday to Friday) from 10.00am to 2.00pm. Visit SVIC for up to date information on Cradle Mountain, Sheffield, Railton and Wilmot and our walls of brochures showcase attractions across the entire state.(continued on page 8).



- Quarrying
- Material Supply
- Civil Construction
- Truck Hire
- Plant Hire
- Silviculture
- Asset Management

THE KENTISH VOICE

Circulated FREE in the Kentish Municipality
and FREE download from the website
www.thekentishvoice.com.au

The Kentish Voice, 12 Victoria Street
Sheffield TAS 7306

Published by Thema Pty Ltd
as trustee of the Douglas George Begg Family Trust
ABN 53 646 737 964

Editor : *Lesley Begg*

Contact for Editorial:

editorial@thekentishvoice.com.au

Contact for Advertising: *Doug Begg*

advertising@thekentishvoice.com.au

Phone: 0429 451 107

Web site: *www.thekentishvoice.com.au*

Printed by Kentish Print
12 Victoria Street Sheffield 7306

**Deadline for advertising and articles is
20th of the month for the next edition.**

Disclaimer: Whilst every care is taken the producers of The Kentish Voice cannot be held liable for any publication errors in written material or advertisements. Views expressed by contributors are not necessarily those of the Editor or Staff. The Editor reserves the right to exclude any contributor or advertiser at their discretion. Some material may be abbreviated due to space availability. ©Copyright Thema Pty Ltd 2019 All rights Reserved

EDITORIAL

Life is almost back to normal for most of us thanks to the efforts of our Governments, Federal and especially State; the front-line workers who have sustained us during the pandemic; the local businesses that have had so much to do to comply with changing guidelines to ensure a safe transition to what will be a "New Normal"; and especially to all who have sacrificed their freedom of movement and interaction with others in order to control the corona virus here in Tasmania.

As we embark on the task of rebuilding the economy we need to focus on our local businesses and do what we can to support them. They have all been here to support our community through good times and bad, and this is definitely a time when we can all do things to help them get through some tough times still ahead for them.

As restrictions are easing activities and events are starting to get re-established. This month we have a "What's On" page for the first time since the lockdown. If you are involved in a community group that has completed their compliances to re-commence please let me know the details so that we can let our readers know that you are back for them. Please email editorial@thekentishvoice.com.au or call in to 12 Victoria Street, Sheffield with the details – who, when, where, and a contact number. Don't forget the Community Notes where you can provide more detail than we can provide in the "What's On" section as this is primarily a Calendar of events and activities.

HOW TO GET YOUR COPIES OF THE KENTISH VOICE

2700 copies delivered to Sheffield, Railton & Wilmot,
areas as well as country roadside mailboxes.

Post Office Box holders can pick up their copy from
Sheffield Newsagency or Railton Newsagency ,
& Wilmot Store

If we missed someone we are very sorry!

Please let us know so we can make sure that you receive
future editions.

Or you can read a copy at

- Fudge 'n' Good Coffee
- Tasmanian Farm Shop
- Blacksmith's Gallery
- Bossimis
- * Mountain Mumma
- * Sheffield Library

Or you can download your copy of

The Kentish Voice at

[https://www.dropbox.com/sh/
mgf8ap3xt5nkl24/AABv6EcThhw-
qy8yUD0t1iNna?dl=0](https://www.dropbox.com/sh/mgf8ap3xt5nkl24/AABv6EcThhw-qy8yUD0t1iNna?dl=0)



Please feel free to share with our readers the good things that you have found about life during the pandemic. Did you start a new hobby? Establish new friends whilst checking on neighbours? Find that you like working from home rather than commuting to work? Spent more quality family time? Learned how to communicate effectively with others with your phone or computer? Read more books either in hardcopy or online? Created a garden? Explored the vast array of content available free through your Library membership? Or what you missed most during self-isolation?

We would like to share our pride in our "adopted" son and his family. Ruwan is a Chef from Sri Lanka originally. A proud Australian now who has been working as a Casual Chef on the Spirit of Tasmania until stood-down during the pandemic. Ruwan has a food van, and is providing take-away meals in Devonport to support his family. The family has been our greatest joy. It is very rewarding being able to assist where we can in the transition to life in Australia whenever we can over the last 10 years. I encourage everyone to adopt a newly arrived individual or family from overseas as it gives you a whole new perspective on life and helps to create Australian citizens who have so much to offer our State and our country.

Take care of each other, stay well, observe the requirements imposed on businesses and groups for our safety, download the App, and look forward to regaining all the freedoms that we once took for granted.

Lesley & Doug

Supporting Local Businesses Key to Tasmania's Recovery

Many local businesses have been blind-sided by the COVID-19 pandemic, and as restrictions start easing, we must support them where we can.

"Running a business – particularly a small business – is challenging at the best of times," said Liberal Member for Montgomery Leonie Hiscutt MLC.

"As we start the road to recovery, I encourage everyone to support our local businesses as much as possible."

Ms Hiscutt said the experience of the last few months has shown how important local shops, cafes and companies are to the community.

"I'd like to thank the many business owners and staff who have been turning up every day throughout this time, so that the community can still access essential products and services."

Leanne Tamas of The Sheffield Shed said they are thankful they have been able to operate and provide essential services over the last few months.

"We've changed a few things about the way we operate, such as social distancing in store and increased surface cleaning," Ms Tamas said.

"And we also offer new services, including car park pick ups and deliveries to vulnerable people or people in self-isolation, and these services will remain."

But the biggest difference Ms Tamas has noticed is the increase in people who are now shopping locally.

"We are a small business in a small town, so we usually know every face that walks in," said Ms Tamas.

"Over the past few months, we've met a lot of new people who haven't shopped with us before but who live in the area or have come from further away.

"This is why it's important to visit local businesses in good times, so we can still be here when things are tough."

Ms Hiscutt said there is a new website to help people buy locally.

"Brand Tasmania and the Tasmanian Chamber of Commerce



ABOVE: Leonie Hiscutt MLC visits Leanne Tamas (L) at The Sheffield Shed

and Industry have put together a website to help people find Tasmanian businesses: www.buysomethingtasmanian.com.au," Ms Hiscutt said.

"If you are after a particular product or service, I urge you to first look at the Buy Something Tasmanian website, and see if there is a provider in your local area."



THE MAGICAL WORLD OF TASMAZIA & THE VILLAGE OF LOWER CRACKPOT

Created by the Laird of Lower Crackpot you are invited
to visit Tasmania's premier destination

**Tasmazia is currently closed and preparing to re-open
better than ever!
Check our website and Facebook page for updates.**

Featuring 8...
Lower...
(le...
Kids...
Shady parking, Outdoor Tables for Picnickers, and the best Ladies Loo on the planet!

Open 7 days (except Christmas Day) Nov – Apr 9 am – 5 pm May – Oct 10 am-4 pm
At the entrance to Lake Barrington Rowing Course Phone: 6491 1934

WHAT DO I SAY? WHAT DO I DO?

Free Community Workshop

Please join us for a free, online community workshop on Wednesday, 26 August 2020 from 12.30pm - 3.30pm to increase our understanding of suicide bereavement and learn support skills.

Topics covered:

- Crisis, trauma and grief
- What makes suicide different from other types of sudden death
- Beliefs and values
- Support approaches and best practice
- Self-care

This workshop is available to Kentish residents as well as residents in Tasmania outside of the Kentish municipality.

For information on the workshop and the meeting log-in, please contact Leigh Gracie, Kentish Council on (03) 6491 0200 or leigh.gracie@kentish.tas.gov.au.

Tax Time Changes Due to COVID-19

Last Updated: 17 June 2020

It has been a difficult year, but your tax return doesn't need to be. Find out the how different types of income and expenses may affect your obligations this year.

2020 has been difficult and the Australian Taxation Office (ATO) recognises that businesses have experienced significant challenges. To help make tax time easier, the ATO has a range of different approaches to support you, particularly where new circumstances mean that people are receiving a different type of income or able to claim new deductions.

COVID-19 work related expenses Working from home

The ATO announced the temporary 'short-cut method' that applies from 1 March 2020 to 30 June 2020 for those who have incurred some form of expense for working from home as a result of COVID-19.

If you're using the short-cut method, you should know:

It covers all deductible expenses and can be used by multiple people working from home in the same house.

All you need to do is keep a record of the hours you worked from home as evidence of your claim. The short-cut method is all inclusive, you can't claim for any other working from home expenses.

You can still choose to use one of the other existing methods to calculate your expenses for working from home if you prefer.

Learn more about the short-cut method and the expenses you can and can't claim from the Australian Taxation Office website.

Protective clothing

If you work in industries like healthcare, retail and hospitality; another deduction you may be claiming due to COVID-19 is expenses for protective items if they have been paid for and not been reimbursed. These items include: gloves; face masks; sanitiser; anti-bacterial spray.

Travelling from home to work

Generally, most people cannot claim the cost of travelling to and from work and working from home as a result of COVID-19.

JobKeeper and JobSeeker

If you're a sole traders and received the JobKeeper payment on behalf of your business, you will need to include the payments as assessable income for the business.

If you have received JobSeeker, the ATO will also load this information into your tax return at the Government Payments and Allowances question once it's ready. If you're lodging before this information is included for you, you will need to make sure you include it. Leaving out income can slow your return down or result in a bill later so it's definitely best avoided.

Early access to superannuation

If you received early access to your super this year under the special arrangements due to COVID-19, any amounts you've withdrawn from super under this program are tax-free and you do not need to declare them in your tax return.

Tax time essentials

The ATO website has essential tax time information to help you get it right when lodging your tax return this year.

**WHAT DO I SAY,
WHAT DO I DO?**

PLEASE JOIN US FOR A FREE
COMMUNITY WORKSHOP:

Purpose:

To increase understanding of suicide bereavement and learn basic support skills

Topics covered:

- The StandBy Service Model
- Crisis, trauma and grief
- What makes suicide different from other sudden death
- Support approaches and best practice
- Self-Care

EVENT DETAILS

DATE: Wed 26th August 2020
TIME: 12.30pm – 3.30 pm
VENUE: Via Zoom – login details given on registration for this event
FACILITATED BY: Rod Lambert & StandBy Team
RSVP BY: Mon 24th August
E: leigh.gracie@kentish.tas.gov.au
T: (03) 64 910200

FOR MORE INFORMATION CONTACT:

LEIGH GRACIE
Community Development Officer
Kentish Council

P (03) 64 910200
E leigh.gracie@kentish.tas.gov.au

STANDBY
SUPPORT AFTER SUICIDE

WWW.STANDBYSUPPORT.COM.AU

StandBy is an Australian Government initiative

Lifeline Saving Lives
Crisis Support, Suicide Prevention.

KENTISH

We acknowledge the traditional Custodians of the land on which we operate, and pay our respects to their elders past, present and emerging.

Our organisation is a place where human rights are respected and people of diverse genders and sexual orientation are welcomed and supported.

Tasmanians Rewarded by Early Progression to Stage 3 Road to Recovery from 26th June

Businesses permitted to reopen from 12pm Friday 26 June 2020:

- Indoor amusement parks, play centres, arcades
- Saunas, spa baths, flotation tanks and bath houses
- Garage sales, car boot sales, second-hand goods sales
- Strip clubs
- Casinos and gaming venues
- Indoor zoos (in addition to predominately outdoor zoos)
- Stadiums
- Markets and food vans at markets
- Provision of services to a person by a sex worker, within the meaning of the Sex Industry Offences Act 2005
- Food courts (will include dine-in)
- Night clubs

Patrons must be seated in premises where alcohol is sold, meaning activities that are not seated (eg pool, dancing) are not permitted.

Sporting facilities must continue to have a staff member or other authorised person on the premises while open.

From 12pm Friday 26 June 2020, the number of people permitted at businesses/activities (other than households) will be determined by gathering limits, where the maximum density limit permits.

Gathering limits will be 500 people in an undivided space outdoors and 250 people for an undivided space in an indoor premises. The maximum density limit will be one person per 2 square metres.

Where the number of people permitted according to the density limit is less than the gathering limit, the lower number applies.

Where practicable, business operators, staff, volunteers and attendees should maintain a distance of 1.5 metres from other people.

The maximum number of people permitted on a premises includes staff, volunteers, children and babies.

The limits outlined above do not apply to the following specified premises, but the number of people on these premises should not exceed the total number specified in the occupancy permit for the premises under the Building Act 2016. The specified premises are:

- Airports and premises used for public or commercial transport.
- Medical or health service facilities, including veterinary facilities
- Disability or aged care facilities
- Prisons, correctional facilities, youth justice centres
- Courts or tribunals
- Parliament
- Supermarkets, grocery stores, retail stores or markets
- Shopping centres, office buildings, factories mining sites or construction sites
- Schools, universities, education institutions, childcare facilities, child and family centres
- Premises that deliver services and support to disadvantaged community members
- Indoor and outdoor spaces where people are transiting through
- Emergency services.

Proposed Date for Borders To Re-Open

On Friday 26th June the Premier, Peter Gutwein, announced a tentative date for Tasmania's borders to re-open

- Friday July 24th.

This is subject to Health Authority advice and the situation in other States.

HELP KEEP CORONA VIRUS OUT OF OUR COMMUNITY

The COVIDSafe App for mobile phones helps protect our community from coronavirus.

It helps public health workers let people know when they've been close to someone who has coronavirus. Your information is stored securely by the app on your phone.

The more people who use the app, the better it works and the sooner we can get our community back to normal

DOWNLOAD THE COVIDSAFE APP TODAY AND KEEP KENTISH SAFE.



Kentish U3A Inc. Monthly Report - July



Exciting news!!

Restrictions are being eased, lockdown is being lifted and isolation is opening up. Yippee!!!!

We have a starting date....

Semester 2 will begin on July 6th. This will only go ahead if our state keeps heading in the right direction. It was great news when we moved to stage 2, and now we have progressed to stage 3 earlier than expected. We still have to comply to the COVID-19 safety rules and all our tutors have their plans in place. Your tutor will contact you if there is any change to the start date.

You will find the Semester 2 Timetable on page 26

Please note there are some time changes. Contact your tutor if you need clarification on any issues.

And, don't forget there is a new course to check out.

RIGHT: 'Some of the lovely items to make in our new Paper Craft class.'



Paper Craft will start on Friday, 10th July at 10am at the Sheffield Uniting Hall.

There are still a few places left so be quick and register with Judy on 0428 576 872.

It's time.

Join U3A now lockdown and isolation are easing. Get back out and socialise and enjoy the company of like-minded people. To become a member all you have to do is download the membership form from our Kentish U3A website. Fill it out and either go to the Bendigo Bank - (BSB 633000 Ac. 156837346 and put the class you are going to attend) - or online banking. Again, make sure you add the class you are attending.

The cost is \$40.

Don't forget, Leoni is always on the lookout for new courses. Why don't you give it a go?

Call Leoni on 0429 705 062.

Till next month, Narelle

(U3A Publicity Officer – 0407 660 272)

Fostering Integration in Tasmania

The Federal Liberal Government is further supporting multicultural communities in Tasmania, by providing funding for the Multicultural Council of Tasmania to run the program, Government Road show Tasmania: How to make friends and influence people in Tasmania.

The latest round of the Fostering Integration Grants supports grassroots organisations that are helping migrant communities to be more resilient in times of crisis, encouraging community participation and breaking down cultural and language barriers.

In announcing the grant local Liberal Senator Eric Abetz said now, more than ever, was a time to support initiatives that unite Australians.

"As we have seen during the bushfires and now the COVID-19 pandemic, being part of a strong, welcoming community is so important for all of us, particularly migrants," Senator Abetz said.

"We want all Australians to be able to participate in our society, know their community and work together to make our nation stronger.

The funding is being directed to projects that can comply with, or can be adapted to comply with COVID-19 social restrictions.

The program builds on the Government's \$71 million package of social cohesion initiatives.

It also adds to the Government's support for multicultural communities during the pandemic, with key advice being translated into 63 languages and ongoing engagement through virtual round tables and briefings.

SENATOR THE HON. ERIC ABETZ

LIBERAL SENATOR FOR TASMANIA

FREE Mindfulness Programs to Manage and Prevent Stress, Anxiety or Depression

Eligibility requirements apply



NEW 8 week online mindfulness courses July 2020

Mon 6 July 6.30-8.30pm live-online
Tues 7 July 10am-12pm live-online for depression
Tues 7 July 6-8pm live-online for depression
Wed 22 July 6.30-8.30pm live-online
Fri 24 July 10am-12pm live-online

Numbers limited – applications essential

Visit our webpage for more details and to apply:

www.mindfulnessaus.com.au

Email /phone for further information
admin@mindfulnessaus.com.au / 0488 064 228

Courses are provided free with support from Primary Health Tasmania under the Australian Government's Primary Health Networks Program

PROTECTING YOURSELF AND OTHERS FROM CORONAVIRUS

COVID-19 Testing



Who should get tested?

If you have any cold or flu symptoms, you should be tested for COVID-19.

This includes fever, runny nose, cough, or a sore/itchy throat.

How do I get tested?



Call your GP or the Public Health Hotline **1800 671 738** to book a test



Mobile testing units are visiting locations around the State.

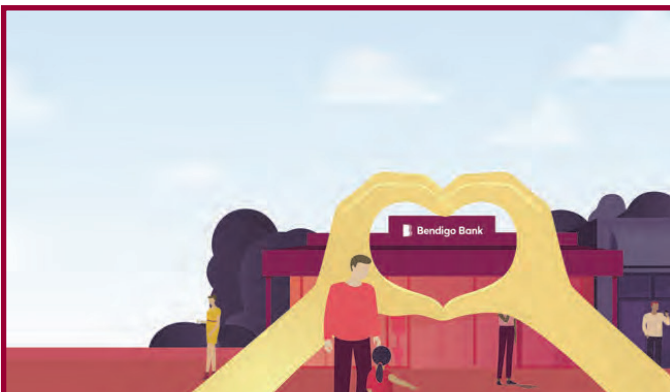
No bookings needed.

Check locations and dates coronavirus.tas.gov.au

For more information visit coronavirus.tas.gov.au



Tasmanian Government



Community Bank · Sheffield and Railton Districts

We're here for you

Bendigo Bank has committed itself to the care and wellbeing of Australian communities for over 160 years. Now, more than ever, we're here to help see you through COVID-19.

Talk to us about how we can help.

Call us on 03 6491 1811 or search Bendigo Bank Sheffield.



Bendigo and Adelaide Bank Limited ABN 11 068 049 178, AFSL/Australian Credit Licence 237879 A1389134, OUT_1253903, 22/05/2020

TAKE AWAYS TUESDAY - SUNDAY

10.30am – 3.30pm
FRIDAY

11.00am – 2.00pm

Find Us Outside
HOTEL & CATERING
SUPPLIES
7 Victoria Pde DEVONPORT



CEYLON CUISINE
a taste of Sri Lanka



K Ruwan Ranasinghe Owner/Qualified Chef
Mobile: 0499 778 893

Vincent Grogan

Manager Professional Bookkeeper
BAS Service Provider

Mobile 0417 747 115
Email vincent.g@myofficewizard.com.au

Servicing the North West Coast
Located at Sheffield and Smithton

Member of the Institute of Certified Bookkeepers



Defibrillator at Turnbulls Pharmacy



Lions Club of Kentish members are proud to present a new defibrillator to Borys at Turnbulls Pharmacy .

The Lions have worked with the Tasmanian Government and Ambulance Tasmania to help protect the wellbeing

of people in the Kentish Community .

in a community collaborative effort the Defrillator was installed by Tony Hennekam for the men's Shed.



**Would you like to
earn some extra \$
delivering
THE KENTISH VOICE
in RAILTON?
Please Call Doug on
0429 451 107**

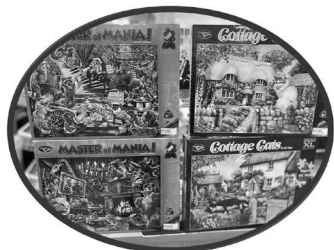
SHEFFIELD NEWSAGENCY

50 MAIN ST PH 6491 1135

E: sheffieldnewsagency@bigpond.com

**NEW STOCK OF PUZZLES
HAVE ARRIVED INSTORE**

**PLUS GAMES AND ACTIVITIES
FOR THE WINTER MONTHS AHEAD**



**WINTER OPENING HOURS
MONDAY – FRIDAY – 6AM TILL 5PM
SATURDAY – 6 AM TILL 2 PM
SUNDAY – 7 AM TILL 12 NOON
PUBLIC HOLIDAYS – 6 AM TILL 2 PM**

(SUBJECT TO CHANGE)

Papers will be available in the Festival IGA (The Don Store) after we close on Saturdays, Sundays & Public Holidays

Sheffield Visitor Information Centre Re-opens

We have completed our COVID-19 Safety Plan for the Sheffield Visitor Information Centre so the Centre is now open on weekdays (Monday to Friday) from 10am to 2pm.

We commenced this re-opening with a trial recently to determine the demand on the Centre from intrastate travellers. Darrin Cuningham will continue to assess this demand and what capacity we have to open over the weekends, including during the upcoming school holidays.

Remember, the SVIC can take accommodation and tour bookings both in the region and across the state, so please remind any friends and family to use the Centre for their travel bookings to help our local operators with recovery.

Visit SVIC for up to date information on Cradle Mountain, Sheffield, Railton and Wilmot and our walls of brochures showcase attractions across the entire state.

You can contact our friendly staff in person at 5 Pioneer Crescent, Sheffield, via phone 6491 1179 or on the webpage www.sheffieldcradleinfo.com.au and local operators with recovery.

Ladieswear, Menswear, Children's wear, Footwear



**Open 7 days a week
Come and see our friendly
staff**

FIND US ON
facebook

52 Main Street, Sheffield, TAS 7306, 64911121

Make Yourself at Home in Tasmania Campaign

We know we live in the best state in Australia and Tasmanians are being urged to get out and explore our beautiful Island home as part of a new Tourism Tasmania campaign.

The Make yourself at Home campaign, encourages Tasmanians to enjoy what has made our state the envy of the nation, including our high quality, unique products and experiences.

Now is the time to embrace our state's offerings and support our local tourism and hospitality experiences, particularly following a tough few months for many Tasmanian businesses.

A recent survey commissioned by Tourism Tasmania found that 68 per cent of Tasmanians are planning to take a holiday in Tasmania in the next 12 months with a majority preferring to holiday at home than take an interstate or international trip.

We know our visitor economy is a key pillar in Tasmania, with the latest data showing prior to COVID-19 that in 2018-19, tourism directly and indirectly supported around 43,200 local jobs.

In Tasmania we are so fortunate to have internationally renowned produce, experiences and destinations to explore.

There has never been a better time to book a holiday in Tasmania and make yourself at home.

For more information about the Make Yourself at Home campaign visit: www.makeyourselfathome.com.au

Peter Gutwein, Premier & Minister for Tourism

Expressions of Interest Open for Free 'Make Yourself at Home' Campaign Activities for Tourism Operators

As part of the new Make Yourself at Home intrastate campaign, four lift-out booklets are planned to inspire readers to plan a trip within Tasmania. The booklets will be included in the Mercury, Advocate and Examiner.

The first edition will be in newspapers on 26 June 2020. It's designed to be an entrée to the diverse experiences available in our state and is designed to give Tasmanians some ideas about the things they could go out and do during the school holidays.

There are another three lift-outs planned and we're calling for expressions of interests from operators who are keen to be included in future editions, or in any other content opportunities which we will be pursuing over the life of the campaign. This is provided at no expense to operators.

There are three 'themes' for the remaining lift outs:

- August edition - Indulge
- September edition - Road Trips
- December edition - Summer Escapes

Tourism Tasmania are calling for expressions of interest from operators who are keen to be included in lift-outs or other promotional content opportunities that will be developed during the campaign. This is provided at no expense to operators.

To be involved, submit your EOI before July 10.

Criteria you will be asked to address are:

- Outline your product or experience, what makes it so special and let us know if you have a special offer or value proposition for the Tasmanian market. (Find some tips on how you can tell your story here <https://www.tasmanian.com.au/tools-and-resources/get-started>).
- Address how your product or experience fits into one of these themes: Indulgence, Road Trips or Summer Escapes.

• Confirm you:

1. are listed on the Australian Tourism Data Warehouse
2. have registered your business on the Buy Something Tasmanian website
3. are open to the Tasmanian market, have a COVID-Safe plan in place, and are following the guidelines outlined on the Worksafe website.

Submit your EOI via this link <https://www.surveymonkey.com/r/S3F3KQQ> before July 10.

PALOONA FITNESS

Studies have shown those who began exercise in their 70's and 80's have experienced benefits. Now past 65, I am enjoying the benefits myself. I believe whether you are in your teens or in your eighties I can help you get to your fitness goals. That is why I am here and I am passionate about it. After a free consultation, I will completely customized your fitness plan. Together, we will work at your pace, considering your special needs, capabilities and availability.



Paloona Fitness Phone 6402 3368

Kindness and Compassion Worth Celebrating

On behalf of our Member Councils, Cradle Coast Authority (CCA) is proud to support Care Beyond Cure and Anahita Farmden in their bid to celebrate the kindness and compassion of Coasters.

The Cradle Coast Kindness and Compassion Awards were established in 2019 in line with Professor Allan Kelleher's and Dr Julian Abel's Compassionate Cities Charter and nominations are now open for the 2020 awards. The awards aim to recognise the importance of kindness and compassion, especially for individuals with a diagnosed progressive life limiting illness and their carers.

CCA Chief Representative, Mayor Jan Bonde said "It is important that now more than ever, we recognise the kindness and compassion of people in our region. The people of the Cradle Coast region are talented, resilient, hardworking and kind, and these awards are a wonderful way to celebrate that".

Care Beyond Cure Inc President, Julie Milnes said "Kindness and compassion has a benefit for everyone. Recognising that people with illness can be struggling and responding with kindness and compassion has a two-fold effect. It supports those dealing with illness and allows us to walk alongside them. This shared suffering can become a motivation to help others across our communities."



The nomination process is simple and can be completed via the CCA website: www.cradlecoast.com/cradle-coast-kindness-and-compassion-awards/. Nominees need to have actively displayed kindness and compassion to others within their community in an ongoing manner, and there are four categories: individual, community group, business, and school.

Nominees will be shortlisted by Care Beyond Cure representatives, prior to a public online voting process which commences on the 8th of July. The winners will be announced on the 8th of August via a Zoom party.

CCA is jointly owned by the nine Councils of western and north-western Tasmania, to help them achieve regional outcomes and maintain strong local government, by working together.

Sheffield Tasmania
com.au

UNDER NEW MANAGEMENT

Hello Everyone,
The members of Sheffield Inc would like to thank you all for your support over the last ten years or so. It's now time to hand the reins over to the Sheffield Visitor Information Centre as they continue on with the promotion of Sheffield.

For further information please contact
Hannah Allwood at Kentish Council
Phone 6491 0200



Computers, Printers and More

Cheap and reliable home device
troubleshoot and repair.

Only \$60P/h + \$20 callout fee .

If I can't fix it,

I will only charge for callout.

Josh Wilson

0475 795 097

Overland Technology


Overland-

technology@outlook.com

**EXPRESSION OF INTEREST
FOR
SHEFFIELD TOWNSHIP
WALKING GROUP**

Rural Health Tasmania is seeking expressions of interest from Kentish Residents who are interested in joining a 1 hour a week walking group around the township of Sheffield to improve heart health, learn about the Town's history along the way, have a coffee, a laugh and a good yarn afterwards. Please phone 6452 1266 Rural Health Tasmania if interested.

A FREE ONLINE EVENT FOR ALL TASMANIANS



**Thrivng Tasmania:
emerging stronger**

COVID-19 has disrupted our way of life, forced rapid change and new ways of doing things. We have a choice: to go back to 'business as usual' or to boldly create a stronger, thriving Tasmania.

72% of Tasmanians have identified that they want a different Tasmania to emerge from the current crisis'. We will bring Tasmanians together in a virtual conversation to reflect on what this situation has shown us and what is important for you to emerge and thrive.

Join Thrivng Tasmania to connect, dream and move together to shape a stronger, thriving future for our community.

JOIN US ONLINE
This online event is free and open to Tasmanians from all ages and backgrounds. Registration is essential, book at: www.tasmanianway.org/ThrivngTasmania

CHOOSE FROM TWO EVENT TIMES:
- Monday 29 June, 4pm to 6pm
- Thursday 9 July, 10am to noon

Thrivng Tasmania is part of the Tasmanian Way process to facilitate a Tasmanian response to the UN2030 Sustainable Development Goals.

1. UTAS The Tasmania Project. Preliminary Findings Report. May 2020. <http://www.utas.edu.au/tasmania-project>

Hosted by: Tasmanian Way, disruptiveco, Your Wellbeing Hub

Major Partners: City of HOBART, RESPONSIBLE TASMANIA

Supported by: TASMANIAN, Tasmanian Leaders, TASICT

Design Partner: futago_

SHEFFIELD HOTEL

Duncan Bottleshop Specials to.....	12.07.2020
XXXX GOLD 24PK 375ML	\$45.99
BOAGS ST GEORGE 24PK STUBBYS 330ML	\$45.99
PURE BLONDE CANS OR STUBBIES 24PK	\$51.99
GREAT NORTHERN SUPER CRISP 30PK CANS 375ML	\$53.99
BOAGS DRAUGHT CANS OR STUBBIES 375ML 24PK	\$53.99
GREAT NORTHERN ORIGINAL 24PK 330ML	\$53.99
PERONI NASTRO AZZUR 24PK STUBBIES 330ML	\$54.99
J/SQUIRE SELECTED ALES 24PK 345ML	\$55.99
CORONA MEXICAN BEER 24PK 355ML	\$58.99
PURE BLONDE CIDER STUBBIES 24PK 355ML	\$51.99
STRONGBOW CLASSIC CAN 10PK 375ML	\$23.99
J/DANIEL 4PK CAN 375ML	\$21.99
UDL VDKA CAN 6PACK 375ML	\$24.99

The Sheffield Hotel would like to thank all of its locals for their amazing support over these difficult times. Stay safe.

Bar & Bottle Shop Open from 10.00 am DAILY "On Tap" Beers

Boags Draught-Carlton Dry-Great Northern-Orchard Cider Crush-Guinness-XXX Gold-Coopers pale Ale-Boags St George

All enquiries ph. 6491 1130-Sheffield Hotel, Main St, Sheffield

**ROLAND
VIEW BISTRO**

7 Days a Week
11.30 am – 2 pm, 4 pm – 8 pm
OPEN FOR LUNCH & DINNER 7 DAYS

HOME DELIVERIES AVAILABLE CALL
6491 1130 FOR ELIGIBLE AREAS

READY MEALS INCLUDING LASAGNE,
SHEPHERDS PIE & MANY MORE
AVAILABLE EVERY DAY
SHEFFIELD BEST CHEESE CAKES NOW
AVAILABLE FAMILY SIZE ONLY \$20



"The Sheffield Hotel Tasmania"

STAYING CONNECTED WITH TIM WILSON

Hello again,

The COVID-19 pandemic has brought many changes to our lives. One change I have noticed is how computers and the internet are becoming more widely used to communicate. Some people who have until this stage avoided or been reluctant to communicate online have now started to videoconference and some who have held off using online banking are now giving it a go. Life has changed and computers are now more a staple part of most people's lives than ever.

The use of cash has taken quite a beating over recent years and especially so the last few months. Cash is being used less often with some businesses refusing to accept it. Paypal is one avenue for paying for items. It is a trusted method to transfer money between people and businesses. When purchasing items online, Paypal is a convenient option as your address details are automatically placed into the order. Paypal is linked to your bank account also so it is easy to transfer money in and out. 173 million people use PayPal worldwide. It may be worth investigating.

Online Banking has been around for many years now. That said, many have avoided it due to concerns over privacy. There is no online system that is completely bullet-proof. Having said that, we hear of very few cases where a bank's online service is hacked and people lose their funds. While not all banking can be done online, some can. My father has recently started to use online banking after many years of using the internet and commented how he is now confident to transfer money.

Most people love a good story. Whether it is a yarn, a movie or a book. For those who love to read, you must visit Goodreads.

If you are wondering what to read next, then this site is for you. Your book of interest will almost certainly be there. There are so many reviews to consider. The book awards are interesting as well. You will know what to read next after visiting the site <https://www.goodreads.com/>



The NBN. The National Broadband Network. It has been up and going for a year or two now. Most reports have been positive. It isn't free and some plans can be expensive. There is however an offer in place for those who have never connected to the NBN, on a low income and have school age children. NBN will reduce the wholesale rate by \$37 to assist those in this category to access the NBN at home for the first time up until the end of September 2020. Visit <https://www.nbnco.com.au/> for more details.

Don't forget the online services that Libraries Tasmania offers. Why not sit back and listen to a free audiobook? www.libraries.tas.gov.au

Tim

Dear Kentish Council

A gentle reminder: have you forgotten about all the farmers in Kentish ?

Not a murmur of support for the local farmers when the Quoiba Saleyards were closing.

No representative from the agricultural sector for your online meeting to revitalise Kentish on June 22nd. Six paid representatives from the Council but no farmers or representatives from the agricultural stores.

The Murals are fantastic. This year no Muralfest to date, but did Sheffield die ?

Certainly not. The locals pitched in, supporting their beloved businesses.

In there were the farmers (a big percentage of the Kentish ratepayers) buying their groceries, takeaways, prescriptions, fuel, alcohol, clothing, bread, newspapers and their agricultural supplies.

Please don't forget us . Murals and mountain bikes are fine but people still have to eat .

Jan Crosswell ,Farmer,

West Kentish.



Kentish House

5 Austin Place, Sheffield
Mon-Fri 9am-4pm Ph. 6491 2322 / 0447 325 343
kentishhouse@glenhaven.org.au

Kentish House continues to offer Support and Assistance

Emergency Relief and Food Pick-up is available at Kentish House Wednesday's 9:30 - 11:00am; and

Bread Pick Up is available Friday's 9:00 -10:00am.

Please note: available amounts vary, items available on a first in -basis and please bring your own bag/s for collection.

Anyone wishing to receive items via delivery are asked to phone Kentish House Mobile: 0447 325 343 the day before.

Nils (No Interest Loans) appointments are available.

For further information or an appointment contact Kentish House

Green Room Youth Space is open Thursdays 3:00- 4:30pm
(Ages: 12-18yr old)

Any changes to services/programs will be notified ASAP

Kentish House coordinator Cassandra is available via phone Monday - Friday 9:00am - 4:00pm, Mobile: 0447 325 343 or Phone: 6491 2322

We ask that if you or any member of your household currently have a cold, cough, flu like symptoms, fever or have been asked to; self-isolate, waiting a covid-19 test result, been in contact with anyone who has been asked to self-isolate or waiting a covid-19 test result, that you do not attend Kentish House or Programs.



Meet You @ The Green Room

The Green Room youth space is open from 3.00pm - 4.30pm every Thursday for Ages 12 - 18 yrs old.

Meet us there for music, a game of 8 ball and free Wi-Fi!

Social distancing measures will apply. Please do not attend the Green Room if you are experiencing cold or flu-like symptoms.

The Green Room is located at 60 High Street, Sheffield. Contact Cassandra on 6491 2322 for more information.

KENTISH COUNCIL

COMMUNITY MEETING – TREE PLANTING PROJECT

The Kentish Council Tree Planting Committee will hold a Community Meeting on Thursday 2nd July 2020 at 6pm at the Kings Hall, Railton to discuss the upcoming tree planting project in Railton.

All residents are welcome to attend and should RSVP to Bella Thomas on 6491 0200 or via email to council@kentish.tas.gov.au

PENSION REMISSIONS

Are you eligible for a pension remission on your property in 2020/21? To be eligible for a remission the claimant must be responsible for the payment of rates on the property, have a Pensioner Concession, Health Care or Department of Veteran Affairs card valid as of 1st July for the financial year in which you are making a claim. If you have claimed a remission in previous years and your circumstances have not changed, the remission will be automatically applied.

RATES

All ratepayers should receive their rates notices for the 2020/21 Financial Year prior to the 1st August 2020. If you have not received your rates notice by this date, please contact the Council Office.

DOG REGISTRATION

Dog registration renewals should be in your letter box from 1 July 2020. You can pay the renewal in person at Service Tasmania or the Council Office.

This year, Council is offering a COVID safe payment method through BPoint which can be found on the Council webpage via the menu Our Services>Animal Control>Dog Registrations. To use this online payment option, your reference number will be the DTX number shown on your renewal form.

Renewals are due to be paid by 31 August 2020. Please note that that all dogs registered after 31 August 2020 will incur a \$5 late fee. If your dog is NOT registered by the due date (31 August 2020) you may also be subject to the issuing of an infringement notice. This year the penalty amount increases to \$172. Pay on time to avoid a fine.

Dog Accredited Training Tariff

For the 2020/21 financial year, Council has introduced a new classification in the dog tariffs - Dog completed accredited training course. To be eligible, dog owners will be required to provide a copy of any certification such as puppy training, basic obedience, or advanced training.

WHAT DO I SAY, WHAT DO I DO? WORKSHOP

Please join us for a free What do I say, What do I do? Workshop - An online community workshop on Wednesday, 26 August 2020 from 12.30pm - 3.30pm to increase our understanding of suicide bereavement and learn support skills. For information on the

workshop and the meeting logon, please contact Leigh Gracie, Kentish Council on 6491 0200 or leigh.gracie@kentish.tas.gov.au. The Workshop will be presented by Standby Support After Suicide.

LOCAL STIMULUS GRANTS

To support the Kentish municipality's COVID-19 recovery process, Kentish Council has established a COVID-19 Recovery Grant Program.

New Business Recovery and Event Assistance grants have been added to Council's existing grant portfolio, which includes financial assistance to clubs and organisations. All Council grants for 2020 will have a focus on supporting activities that respond to recovering from COVID-19.

The Business Recovery Assistance grant will enable eligible small and medium local businesses to rapidly transition to alternate models of commerce, outreach, and engagement, including digital solutions and/or support circular economy initiatives from simple re-use to repair, re-make and revalue ideas.

The Event Assistance grants seeks to assist cultural, community and sporting groups to develop local events for an audience of 100 people (or more if restrictions ease further) for staging within the Kentish Municipality prior to 30 June 2021. Support is also available for existing events that cancelled their function prior to 16 March 2020 (conditions apply).

Existing Community grants to eligible clubs and organisations will support COVID-19 recovery in the fields of community cohesion, social inclusion, sustainable employment, economic development, environment and natural resources, youth initiatives, community health and wellbeing.

Details will be available on Kentish Council's website - www.kentish.tas.gov.au – in July or by phoning Leigh Gracie on 6491 0200.

Applications must be made on the form provided and close on Friday 31st July 2020. Successful applicants will be advised in September 2020.

PLEASE NOTE that this is a competitive grant process whereby applicants are assessed against selection criteria and ranked in order of merit. All applications submitted must have accompanying documentation as requested including financials and quotes.

NEXT COUNCIL MEETING

The next ordinary meeting of Council will be held on Tuesday, 21 July, 2020 commencing at 7:00pm.

New Tasmanian Safe From Violence Website



The new 'Safe from Violence' website is a central point of information for family and sexual violence. It provides clear and targeted information, online resources and links to a range of people and communities affected by violence.

This website brings together information about family and sexual violence support services in Tasmania.

The website is an initiative of the Tasmanian Government under Safe Homes, Families, Communities: Tasmania's action plan for family and sexual violence 2019 2022 (Safe Homes, Families, Communities).

Seeking Help

This website does not provide emergency assistance or support to people who are experiencing or at risk of experiencing family or sexual violence.

If you, a child, or another person is in immediate danger, call Triple Zero (000).

If you or someone you know is impacted by family violence, call the Safe at Home Family Violence Response and Referral Line on 1800 633 937.

If you or someone you know is impacted by sexual violence, call the Statewide Sexual Assault Crisis Support Line on 1800 697 877.

If you have concerns about the safety of a child or young person call the Strong Families, Safe Kids Advice & Referral line on 1800 000 123.

In an emergency, always call 000.

For more information visit www.1800respect.org.au or see the Resources Hub section of this website.

For more information, visit www.safefromviolence.tas.gov.au

MOLE CREEK HOTEL



WHY NOT TAKE A LEISURELY DRIVE OVER THE SCENIC GOG RANGE AND VISIT THIS GRAND OLD HOTEL

- * Real Country Style Meals – 7 Days a week.
- * Visit our world famous Tassie Tiger Bar – Family friendly with no gambling machines.
- * Plenty of room for the kids to play!



Call Doug and Ramona now on Ph: 6363 1102

Email: molecreekhotel@outlook.com

Web: www.molecreekhotel.com



WATCH THIS SPACE

We will be back!

Contact:

E nwfs@nwfs.org.au

M 0431 484 727

www.nwfs.org.au



VET-TO-PET

We come to you

Dr David East - house call vet

0432 432 394

At home, at your convenience.

14 years at RSPCA Victoria
Highly experienced in
companion animals.
Experienced in agricultural
practice.



IDD Electrical PTY LTD
Innovative Design, Drafting & Electrical

**We are your local
Kentish electricians.**

RESIDENTIAL, COMMERCIAL & INDUSTRIAL

iddelectrical.com.au
0422 686 592

ECL: 1452424 ABN: 6620325775

ANDERSON
HEAT PUMPS
& AIR CONDITIONING



0457 240 022 / ARC 

ABN 42 286 144 129 - Lic No. L118009 - (RTA) AU37870

Senator Claire
CHANDLER
Senator for Tasmania



Get in touch with your ideas about
how we can get...



03 6260 2018
Senator.Chandler@aph.gov.au
SenatorChandler
senatorchandler.com.au



Authorised by Senator Claire Chandler, Liberal Party of Australia, 42 Bridge St, Richmond TAS 7025



**SENATOR
WENDY ASKEW**
LIBERAL SENATOR FOR TASMANIA

Thank you!

Your hard work has helped to limit the
spread of Coronavirus.

Please stay vigilant to keep our
community safe.



-  46 Cameron Street
Launceston TAS 7250
-  03 6331 8501
-  Senator.Askew@aph.gov.au
-  SenatorAskew

Authorised by W. Askew, Liberal Party of Australia, 46 Cameron St, Launceston TAS 7250



thinkwater
CRADLE COAST

Ph: 6427 2953

- Pumps
- Filtration
- Fittings
- Pipe

114 Mersey Main Rd, Spreyton

HI-TUNE  **tyre & mechanical**
6424 9494
Established 1971

Hi-Tune Motors doors are open 7.30am to 5.00pm to attend to your cars every need.
Roderick, Aaron and Peter will give your "Pride & Joy" special attention from the ground up.

MECHANICAL REPAIRS ● SERVICING ● TYRES ● WHEELS ● WHEEL ALIGNMENT ● BRAKES ● SUSPENSION
● TRUCK TYRES ● TRACTOR TYRES

Call in or ring **6424 9494** for a no obligation free quote.
The Hi-Tune team really do look forward to seeing you soon.
36 CLAUDE ROAD SHEFFIELD

SPORTING ACTIVITIES

SHEFFIELD GOLF CLUB

With Covid-19 restrictions slowly being lifted we are now allowed to increase the numbers of players per game.

All Monthly Medals were played. The Ladies and Members Don Store IGA medals were played. Ladies winner was Geneen Duff with a 79 beating Robyn Jones on countback also on 79.. The Members winner was Errol Raddatz on 71, Allan Duncan and Wade Rockcliffe second on 72. The Sheffield Mechanical and Tyre Vets Medal was won by Peter Orchard on 71 countback from David Macmillan. Thanks to Bauke Meijer of SMT for their sponsorship. The final of the Chick of the Walk winner was Robyn Jones 1 up over Judy Denney.

The Ladies Stroke played on May 27 saw Kathy Davies winning on nett 72, second Judy Denney on 73 nett.

Wednesday June 10 Stableford Susie Coombs won with 35 points, second Denise Morgan with 29 points.

Wednesday June 17 Stroke was won by Susie Coombs with 76 nett, second was Kathy Davies with 77 nett.

Saturday 13 June Ambrose was won by Wade Rockcliffe & Lyall Hardwick 63.5, second .25 behind with 63.75 was Nev Pullford & Craig Bootyer.

Vets BBB won on countback was Greg Collis & Nev Pullford from Winston Duff and Peter Orchard both on 39.

The Stableford was washed out and played on Thursday. Gerry Hopkins won on 34 with four on 31, Tony Wootton, David proud, Peter Orchard and Gavin Thomas.

Sheffield Golf Club 6491 1184

Men's President Lyle Thomas 0418 141 727

Lady's President Janice Milner 0437908780

Green Fees (per Day): Adults \$15 and Juniors \$2

RAILTON BOWLS CLUB

Hi, well another month has come and gone and thankfully we have had no new cases, hope everyone is doing the right thing and staying safe. The club has been closed since March when all this commenced, due to the restrictions with numbers etc. we have decided to keep the doors closed for the time being until restrictions get lifted to a larger number.

Our AGM was put off due to the virus and again we will wait until we can safely host this event within our club, taking into account any restrictions that have to be invoked. We are thinking at this point that we might host our Celebration evening in September prior to our opening day, but this is yet to be discussed with the committee. Again I request that members think about taking on positions within the club, to relieve the pressure that has been placed on a few, it is important that we all try and undertake just one thing, this takes the pressure off and spreads the load.

The association is holding their first meeting in July and we will then possibly know what we will have to undertake to get back on the green and compete, hopefully it is not too much different from our previous playing conditions, I realise there will be some differences but I am sure we will all undertake what we have to too play bowls again.

I will let you all know via message whatever the dates will be for the events we are thinking about. Remember we still require some more members for both our Thursday and Saturday competitions. Stay safe everyone, Noelene

COMMUNITY NOTES

KENTISH COMMUNITY MENS SHED SHEFFIELD

Good news for the members as the Men's Shed has re-opened under the guidelines from Health authorities.

We have decided to open on Thursday and Saturday to give our members an opportunity to come along on either day to do landscaping, lining walls inside and machine replacement in the new extension.

We had been notified by the Kentish Council that our application for a community grant has been successful. The grant is for the purchase of a dust extractor for the new workshop, shade sail cloth for our new BBQ area, and a Defib flag.

Leonie Hiscutt MLC has paid a visit to the Men's Shed to inspect the new extension and was very impressed with the work done by members. Leonie



ABOVE : Landscaping



LEFT : Noel Bass hard at work laying bricks.

BELOW: John Watson working on vegetable garden beds



also delivered a First Aid Kit and we thank her very much for all her support.

Tim Wilson, Mayor of Kentish, also came along and met with myself, Peter Willcox, Mike Taylor and Mike Davies to look over the new extension which was a part of the

Premier's grant of \$50,000 to enable us to have more room for members to work in a safer environment as the Men's Shed now has 44 members.

Work has been ongoing revamping gardens on the Spring Street side of the Shed, brick laying of the BBQ area, lining walls inside the extension, and topping up the vegetable beds. A great effort by our members.

The Kentish Community Men's Shed meet at the Shed, Spring Street Sheffield every Thursday and Saturday from 9.00am to 3.00pm. New members and visitors always welcome.

Terry Hughes, President 0429 122 520

RAILTON COMMUNITY PROGRESS ASSOCIATION

Change in the leadership team. Simon Hyvattinen stepped down as president of the RCPA at the end of June. Vice-president, Angus Mackenzie will be acting president until the AGM in September.

Simon and his family put in a lot of work especially for the very successful Railton Bike Show last January. Thank you for your commitment to our town and we wish you well for your future.

Railton Market. Our market did not take place in May as scheduled and now we look ahead to August.

Hopefully, restrictions will have been lifted by then but check out our facebook page or here in the next issue of the Voice.

Trees in Railton. The council will be holding a special meeting in the Kings Hall early in July to discuss tree planting in our town. This will be your final opportunity to have your say in this matter. This is your town so come forward and let the council know what you want to see happen.

Music Group. Corona virus and deep winter may have made it a bit challenging, however, several more residents have come forward to share their skills and join in the fun. No matter what instrument or skill level you have you will be welcomed to join in. For more information phone David on 0364961912.

Commitment and involvement. If you are interested in joining the Progress Association now is a good time to step forward. We welcome new ideas and enthusiasm, or, if you just want to help out as a volunteer please contact Angus on 0448 880 726. *Your town, Our future.*

WORKING ART SPACE SHEFFIELD

One of our two galleries, the Albert Gallery reopened this month for Members Only, where we will be running some Workshops, but the gallery will remain closed to the public at this time. The Pioneer Gallery will remain closed until the current restrictions are relaxed. In the meantime stay home and stay safe.

THE HUB INC. REPORT

Thank you for your understanding, we know everyone is waiting for the doors to open, and the time has come.

We plan to open Wednesday 1st July with shortened hours.

10.00 am to 2.00 pm. This will allow us time to prepare for the next day.

Please remember social distancing, sanitizing and a limited number in the shop.

We know there are lots of items waiting to come to the HUB, if you could space them out our volunteer sorters would appreciate that.

Recent donation: Rowing Tasmania \$6,600.

Thank you again, your support helps us to support clubs, groups and individuals in our Kentish Community.

The Committee

SHEFFIELD LIBRARY

How quickly things have been moving!

We are happy to report that Sheffield Library has now reopened to our normal operating hours, with browsing of shelves and public computer use.

However, social distancing requirements are still in force, so please follow any guidelines displayed in the library, or advice from staff.

We have a maximum of 10 people allowed in the library, so there may be occasions where you will not be able to immediately access the library, so please be patient. To minimise the likelihood of having to wait, we would ask that you spend no more than 15mins in the library each visit. We also have time limits on our computer usage, again, to allow us to remain within guidelines.

In line with health advice, we are regularly cleaning surfaces that are frequently touched, have provided hand sanitiser and would ask that if you have used one of our computers, you use the wipes provided to clean the keyboard, mouse and desk before you leave.

Our *'Click & Collect'* catalogue will remain available for your convenience. This catalogue shows items that are currently 'on shelf' at all our sites, meaning these items will arrive more quickly for you. You can now access our entire catalogue as well, so you have access to items you will need to wait for like new or popular items.

If you have grown to love our online items, you can still access eBooks and stories, eMagazines, eComics, eNews and journals, eMusic, eFilm and eLanguages. You can also browse our online databases, historical newspapers, family history resources, research and reference material—among so many other things.

Go to www.libraries.tas.gov.au.

* Select eLibrary on the home page, where you will find information about borrowing eResources online.

* For family history, historical newspapers, family history, or research and reference material, select the Tasmanian archives + heritage link.

We are still waiting on advice in regard to our public programs, so check with our staff or Facebook page for the start date of Book Club. We are hoping it will begin this month.

While we have been closed, our suppliers have still been delivering new items, so there is a feast of new reading awaiting you, although they are a little more difficult to find!

In the main search box, type the word fiction, then when the list of results appear, go to 'Year' in the 'Limit Search Results' and select 'Post 2019'.

You can reduce the list more by also selecting 'fiction' from the 'Fiction' limit, 'Lending' from the 'Availability' limit, 'Books' from the 'Format' limit and ignore 'Children' & 'Youth' from the 'Audience' limit.

We look forward to seeing you back in the library.

WILMOT PRODUCE SHARE

Wilmot Produce Share will be held on the first Tuesday of the month. The next date being 2nd July, 6.00pm in the Shelter in Pioneer Park adjacent the Wilmot Memorial Hall.

KENTISH GARDEN CLUB

Celebrating winter's shortest day



As restrictions for COVID-19 continue to roll back, the Kentish Garden Club is looking at resuming meetings from mid August. For more information, see next month's issue of Kentish Voice.

In the meantime we continue to keep in touch via Facebook. On June 21, which marked the winter solstice, club members posted images of flowers picked from their garden on the shortest day of the year.

Although its winter, there's a surprising number of blooms to be found in gardens along with autumn foliage and berries. Buds and new shoots are also appearing promising flowers in late winter and spring. It seems the garden never sleeps even when we think it's too cold or wet to garden.

What's flowering

Some of the boldest winter-flowering plants come from the red hot poker. These perennials add tall spires of red, orange or yellow flowers to cheer the garden and provide nectar for visiting birds. There's even one reliable variety called 'Winter Cheer' which does just what its name suggests!

Under the deciduous trees, which are now almost bare of leaves, clumps of hellebores and narcissus are coming in to flower. These reliable winter bloomers will continue to bring colour to the garden well into spring.

A quick way to add winter colour is with advanced pots of annuals such as pansies, polyanthus and primulas, which are all flowering now and available at garden centres. Plant up any bare areas with these annuals or add them to containers arranged where they can be seen from indoors or will welcome you home on a cold day.

As well as annuals in bloom there are also pots of Italian lavender flowering now to bring home from the garden centre and, if you want to enjoy winter fragrance as well as flowers, seek out a winter-flowering daphne (*Daphne odora*).

Membership

Follow Kentish Garden Club on Facebook to keep in touch. To join the club and take part in future meetings and garden visits, download a membership form from kentishgardenclub.com.au. Membership is \$15 per person and due for the current financial year. For more information call Jennifer Stackhouse on 0488 047 011.



ABOVE: Winter solstice blooms: jonquil, bluebells (lilac not blue), calendula, fuchsia, yellow red hot poker, viburnum, hydrangea, penstemon, daisy, foxglove, euphorbia, correa, rose, delphinium, nerine, parahebe, viburnum (flowering out of season), forget-me-not, bidens, scabiosa, cestrum, anisodonta, ceratostigma and sasanqua camellia.

PIZZA CONNECTION

"As food is to the body, so is God's word to the soul."

Slowly but surely, as the old saying goes, we are emerging from many of the restrictions on life imposed by Coronavirus Covid 19. The one ongoing and perpetual issue for us is the limitation on gatherings, presently limited to 250 indoors but with social distancing restraints. The current restrictions impose 2m per person but this still restricts the Town Hall, our usual venue, to around about 80 and brings with it responsibilities to adhere to all Covid 19 procedures to contain the virus, these are quite comprehensive and demanding.

Until we can see a clearer way forward, we will wait for more developments before we can plan for our next men's pizza night. The good news is that Tasmania is doing very well containing the spread of the virus, may this continue.

In the meantime, we have brief clips of previous speakers available on our Facebook site, to access, either Facebook or Google, Sheffield Pizza Connection and click onto videos for a message of encouragement.

For information on Pizza Connection, Craig 6429 3372, John 6491 2525, John 0407 877 104.

Thank you to our local business who are supporting us all during these trying times. May we never forget your service!

Cancer Council Tasmania

for local support and information
...all cancers, all ages

We are open

Monday to Friday

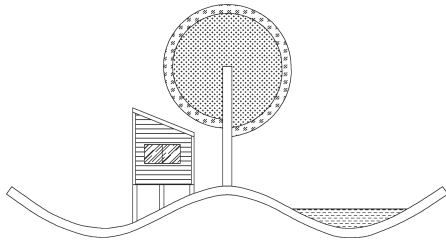
1.00pm – 4.30pm

We provide the following at no cost:

- Individual Support
- Support Groups
- Wig Library & Headwear
- Transport to Treatment
- Financial Assistance
- Information, Education and Resources

For more information, please call on 6419 4200 or drop in and see us at Suite 2, 45 Best St Devonport





WOOD DRAFTING & DESIGN SERVICES

For HOUSE PLANS, EXTENSIONS & SHEDS
call Paul Wood on 0408 583 646
5/32 Rooke St Devonport

D SIGNS & PROMOTIONAL

For all of your Signage and Promotional needs!

45 Elizabeth Street, Devonport Phone 6424 8428

- Signs ▪ Business Cards ▪ Stationery & Brochure Printing ▪ Promotional Products ▪
- Embroidery ▪ Screen Printing ▪ Business, Team and Dye Sub Full Colour Workwear ▪

www.d-signs.com.au

Alan Dyer's Books
are now available as
e-books online at
www.alandyerbooks.com

**Your Local Advertisers
are here to support you.**

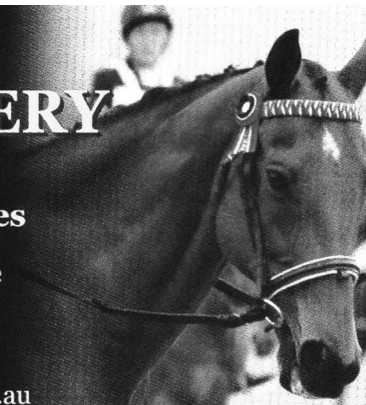
**LATROBE
SADDLERY**

Alan & Anita Geddes

Factory 13, 15 Bay Drive
Spreyton TAS 7310

Mobile 0418 467 655

www.latrobesaddlery.com.au



**Sheffield
Veterinary Clinic**

- For all animals large and small
- 24hour emergency service

PHONE 6491 1556

36 Main Street, Sheffield

Monday–Friday 8.30am–5.00pm

Thursday – Open late by appointment

Saturday - 9.00am - 12.00pm



P & D BELLCHAMBERS

Furniture & Joinery

Specialising in Kitchens, Bathrooms & Wardrobes
(03) 6496 1081
Mobile: 0419 514 172
pdbellchambers@hotmail.com



34 Foster Street
PO Box 41
RAILTON. TAS. 7305

PADDYWORKS

Excavation and Earthmoving

20 tonne excavator - 7.5 tonne excavator
with 5 buckets, auger and rock breaker
2.5 tonne excavator - 10 yard tipper

Tim Padman 0439369455 / 64911181

**Hays Computer
World**

No job too big or too small.
From PC repairs to Office 365
Management and more.
7 day week support for clients.



Setup – laptops, computers networks mobile phones, tablets
I.T Consulting, P.C. Support, Website Management & More
Repairs & Maintenance – Phone, tablet, computer, virus
On-site Training – Basic, Emails, Facebook, Dropbox & more
Drone Services; Photos & Videos; Paddock Fly-over

Office: M - F 7.30am- 4:00pm Ph: **1800 841 630**
In Office: Monday, Tuesday & Friday 9am–4.30pm
After Hours Support 4.00pm – 6.00pm



E: admin@hayscomputerworld.com.au

W: www.hayscomputerworld.com.au

HomeBuilder a ‘massive missed opportunity’

By BRIAN MITCHELL MP

Australia is set to lose a further 100,000 apprentices and trainees this year, a massive 35 per cent drop on what we have now.

Tasmania is set to lose 2,107. It's no wonder that our nation has a shortage of bricklayers, plumbers, hairdressers, panelbeaters and other critical trades.

How does this Prime Minister expect HomeBuilder to rebuild communities and the economy when his government has slashed support for the apprentices and trainees who are vital to the building and construction industry?

Over the past seven years, this incompetent Liberal government has ripped more than \$3 billion from Australia's TAFE and training systems, leaving this critical sector woefully unequipped.

No wonder Australia has a skills shortage, with more than 140,000 apprentice and trainee positions lost in this country since those opposite came to office. There are 140,000 already lost, and another 100,000 are soon to join them under this government. What a legacy.

It's all very well to talk about construction projects and renovations, but you need tradies and apprentices to build them. The sector was expecting to build 160,000 homes this year. Now it's 100,000. That's 60,000 fewer homes in the pipeline.

HomeBuilder is a massive missed opportunity. It is woefully inadequate and woefully misdirected.

‘Pensioners who want to renovate their kitchens, the Prime Minister has deliberately locked them out’

Let me be clear: the \$25,000 for new home builds gets two thumbs up. They won't get an argument from me about that. I think that's a good thing and, largely, what Labor would have done.

But a minimum of \$150,000 for a renovation before you can get \$25,000? That's ridiculous. It locks out so many people—nearly everybody in Tasmania—from accessing that money. That renovation side of it will do nothing to assist the trades in Tasmania.

And what sort of person who claims to be a national leader would think up a \$688 million housing and renovation program and not put one cent—not one cent—towards public housing or towards housing for women escaping domestic violence?

There are 3,500 Tasmanians on Tasmania's priority public housing list. People could be waiting for a year or more for a place.

We are talking about pensioners, veterans, single parents, people with disabilities, women escaping domestic violence, people who could do with a bit of a hand and, more importantly, a roof over their head.

If you are not convinced by the social good argument, be convinced by the raw economic argument. Tradies would be kept busier

building more homes for these folk and fixing public housing than they would be building pool decks and second storeys.

Imagine the maintenance backlogs that could have been cleared if armies of tradies were deployed to fix up public housing around the country in desperate need of repair—mould in kids' bedrooms because of crappy ventilation, leaking kitchens, dangerous electrical outlets, security fly screens that don't lock.

What is the better use of public money? Which one delivers the better bang for buck?

This is a poorly designed scheme that fails to do what it is meant to—stimulate building and construction, which was sputtering even before COVID, and since then is heading for the cliff.

The Prime Minister's performance in Question Time was a disgrace when he said he had deliberately designed a scheme to lock pensioners out.

Pensioners who want to renovate their kitchens, he has deliberately locked them out and he basically labelled tradespeople who specialise in the small renovation projects sector crooked, and he stands condemned for that.

Brian Mitchell MP

Your Federal Member for Lyons

Contact Brian:

6398 1115 | brian.mitchell.mp@aph.gov.au



LET'S REBUILD OUR REGIONS

Authorised by Brian Mitchell MP (ALP, Tasmania) 53B Main Road Perth TAS 7300



KENTISH FIELD NATURALISTS GROUP



Where? Where? Wedgie! 2020

Over May and June, our group members have been getting together with others in our area to help with the Where? Where? Wedgie! Birds of Prey survey 2020, which was held over 2 weekends. It was really gratifying to see the participation rate in our area. There were teams surveying the skies around Railton, Gowrie Park, Claude Road, Sheffield and Paradise. Some of our more adventurous members “went bush”, one team travelling out to Liena and beyond, to the Mersey Forest Reserve. They saw 3 eagles on Friday but none on the Saturday. Our team spent a wonderful time, despite drizzling rain in the beautiful area around Lake Gairdner at Moina. We didn't actually see any eagles during our 6 observation periods, but saw lots of other species. It helped to have the Cradle Forest Inn close by for a coffee and lunch break, not to mention having a lovely hot cuppa with Steve, one of the local landowners after we finished the survey!

Nature Trackers is a Bookend Trust initiative. Bookend Trust is a not-for-profit education initiative that seeks to inspire students and their communities with the positive environmental careers they can build making the world a better place. Funded through the donation of time, energy and resources by private individuals concerned about building a positive and co-operative environmental future for our students and community.

On Saturday July 18th we are going to meet at 10 am at the shelter shed at the start of the O'Neill's Creek Nature Walk at Gowrie Park, for another working bee to keep the track clear. For more information about the Kentish Field Naturalists contact Leoni Read, phone 0429 705 062.

WILMOT MUSEUM

The Wilmot Museum has re-opened Saturday and Sundays from 11.00am till 2.00pm. See you there!

THE YOUNG PERFORMERS CHOIR

3.45– 4.45pm on Wednesdays -
Sheffield Uniting Church.

Singing is very uplifting and lots of fun!

Our group started at the end of February thanks to a generous grant from The Hub. At present we have 17 youngsters coming along, between the ages of 5 and 15.

We are lucky enough to have a small team who are keen to keep them singing. Mark McCormack and his wife Sandra, well-known performers and music teachers, have offered to teach the group, supported by Elizabeth Zuluaga. Parents are welcome to join in.

We are conscious of the concerns with the COVID 19 virus. We meet at Sheffield Uniting Church Hall which is quite large, so we are able to spread out. We are also ensuring that high standards of hygiene are observed. So now we are encouraging any youngsters who love to sing, to come along to join our singing group, from 3.45– 4.45pm on Wednesdays.

If you would like more information, contact Leoni Read ph 0429 705 062

All welcome!



FUDGE 'N GOOD COFFEE GALLERY

Back by popular demand – Karen (Kaz) Wakefield and her wonderful and quirky mosaics. Kaz's artworks have been selling fast throughout June so be quick and don't miss out.

Daniela Selir's art will also be on exhibition in our high tea room, including Tasmanian landscapes, animals, flowers, etc. Look out also for her unique pyrography – very cute animals on rich Huon pine.

There is something for everybody at Fudge n' Good Coffee café in July. Oh, and there is, of course, our famous fudge and coffee as well. Come and join us – you are very welcome.

Thank You to the many volunteers that help to make Kentish such a wonderful place to live!

Leonie Hiscutt MLC

Liberal Member for Montgomery

Support your local businesses!

Buy Something Tasmanian

buysomethingtasmanian.com.au

Stay home.
Save lives.

Public Health Hotline:
1800 671 738
Business Tasmania Hotline:
1800 440 026
www.coronavirus.tas.gov.au



My Team and I am working to assist you through this period. Contact me via:
6425 8300 | leonie.hiscutt@parliament.tas.gov.au | Facebook (@HiscuttForMontgomery).



KMS TREE SERVICES

- Certified Arborist
- Tree Removals
- Wood Chipping
- Corrective & Safety Pruning
- Hazardous Tree Assessment
- Mulch Deliveries

Mathew Stephenson
0408 642 728

kmstreeservices@gmail.com
www.kmstreeservices.com

www.d-signs.com.au

**PUMP SUPPLY & REPAIRS
IRRIGATION DESIGN & INSTALLATION**

WE NOW STOCK

RURAL SUPPLIES
STOCK FEEDS
POULTRY SUPPLIES
CAT & DOG FOODS
AND MUCH MUCH MORE!

**TAS PUMPS, PIPES
and RURAL SUPPLIES**

Phone: 6491 1797 39 HIGH STREET, SHEFFIELD

TAS SPREADING PTY LTD

**CONTACT RICHIE ON
0459 555 476**

**SPREADING OF; FERTILISERS,
AGLIME, DOLOMITE, POPPY
MEAL, PRE-SPREADS AND
SEEDING. NO JOB TOO BIG OR
TOO SMALL**

Guy BARNETT
Liberal for LYONS

Listening
Caring
Delivering

Tasmanian Liberals

P: (03) 6701 2170 - www.guybarnett.com.au
E: guy.barnett@dpac.tas.gov.au [GuyBarnettMP](https://www.facebook.com/GuyBarnettMP)

Authorised by: Guy Barnett, 76 Emu Bay Road, Deloraine Tas 7304

Racism in Today's World

Just as a fever is a symptom of disease in the body, racism is a symptom of disease in society. Suppressing the symptom does not cure the disease, but curing the disease eliminates the symptom¹.

If you liken the world to the human body, and regard the inhabitants of the world as cells inhabiting the human body, then what causes distress and pain in one group of cells has an adverse effect on the whole body. If you get a disease in your toe, your whole body suffers pain and illness. Racism is a spiritual disease. Torment, oppression, injustice and prejudice inflicted upon one group of people in society in this country or any other country causes the whole of that society to suffer spiritually.

To eliminate racism we must establish the fact the human race is one race of people and that the principle of unity in diversity is the moral foundation upon which our country's laws are based.

The powerful demonstrations of peoples of all colour coming together in many cities around the world, including Australia, to protest peacefully against racism witnessed during the past few weeks illustrates the severity of the disease in many countries. Why is racial discrimination so offensive? Because it violates the dignity of human beings. It ignores the fact that each person is a spiritual being created by a Loving Creator with a unique purpose in life. It is poisonous because it cripples its victims, corrupts the perpetrators and blights human progress.

When the majority of the people recognise the essential oneness of humankind, enjoying the differences of skin colour and culture as contributing to the diversity and beauty of human interactions, out-worn attitudes and doctrines of racial superiority will be abandoned. Cooperation and reciprocity with peoples will become the preferred attitudes and civilization will rise to a higher level. At this higher level no one will fear

oppression, even those who were formerly the oppressors. The sharing of power and responsibility can be implemented without fear through appropriate legal measures and equitable social and economic policies.

In The holy writings of the Baha'i Faith, Baha'u'llah, speaking with the Voice of God, addresses us all: "O Children of Men! Know ye not why We created you all from the same dust? That no one should exalt himself over the other. Ponder at all times in your heart how ye were created. Since We have created you all from the one same substance it is incumbent on you to be even as one soul...that from your inmost being by your deeds and actions the signs of oneness and the essence of detachment may be made manifest. Such is My counsel to you, O concourse of light! Heed ye this counsel that ye may obtain the fruit of holiness from the tree of wondrous glory."

-Sandra Rowden-Rich

¹ Baha'i International Community "Elimination Racism" Geneva, 8 February 1989



Bahá'i Faith.

"O Children of Men!

Know ye not why we have created you all from the same dust? That no one should exalt himself over the other. Ponder at all times in your hearts how ye were created..."

-The Hidden Words of Bahá'u'lláh

Holy Day for Martyrdom of the Báb 9 July

www.bahai.org 0448 976 442

Robert's Gardening Tips

The next step in fixing up my rose garden is building the rose arbor. I was lucky enough to pick up 7 large red "Dublin Bay" climbing roses which had been removed because of new landscaping. They have now been heeled in waiting to be planted. I decided to use an old plastic house frame for the arbor. The frame will face North/South to take advantage of the view of Mt Roland. It will be 10m long, with 5 hoops for the roses to grow over, leaving space between each hoop to allow light to get through for ground cover roses. The roses will climb up the sides to a height of 1.8m on reinforcement wire. The arbor is 5.4m wide with garden beds 1.2m wide on either side in which to plant the roses, with a central pathway down the middle. The frame is painted Ironstone grey, with finials at the mid point on either end. Once the roses have grown, the hoops won't be visible. The hoops have been concreted into place, and timber has been used to hold them firm, and to attach the wire to. When you tie your climbing roses to a frame, try to tie the canes horizontal. This will mean you get flowers along the length of the canes, not just at the tips. Well, there is still more work to do, but first a cup of tea.

Happy Gardening!





LAWN & GARDEN
MAINTENANCE
SLASHING / WEED CONTROL
RUBBISH REMOVAL & MORE
FREE NO OBLIGATION QUOTE
13 26 13
www.viphomeservices.com.au

John Mitchell 24 Hour Towing



0417 551 701
A/H 6491 1633

SHARPENING in SHEFFIELD

Knives, garden tools,
wood working, scissors,
and most others

Gerry Hopkins
0418 128 360
Drop-off/pick-up
Blacksmiths Cafe

Thank you
for supporting
your local
advertisers
"Buy Local"

Complete Garbage Skip Hire

Licensed Asbestos Agent &
Transporter



Ph Laurie 6496 1078
<http://www.completegarbage.com.au>

LIONS NEED YOUR OLD GLASSES & HEARING AIDS

They can be left at
Turnbull's Pharmacy,
Sheffield Medical Centre,
and the Post Office Railton
or call Lion Robin Bricknell
for pickup on 0439 315 793



Julian Rogers Carpentry

0428 823 004
ABN : 93077858387
julianrogerscarpentry@gmail.com

Renovations
Extensions
Restorations

Rodney Blenkhorn's Services

- Excavation** 20 tonne excavator
Various buckets and log grab
and stick rake
- Sawmilling** Onsite service with a Lucas 10" Mill.
Small Timber Orders
- Rural Fencing** Specializing in wallaby proof
and stock proof fences.
- Tree Removal**

Free Quotes - Phone 0448 338 992



Buy Local or
Bye-Bye Local!

KNIGHT EARTHMOVING TAS BOBCAT, EXCAVATOR & TRUCK HIRE

**3½ Tonne Excavator with rubber tracks
and 300 or 450 diameter augers.**

*"Family owned business servicing the Kentish area for
over 30 years, experience that will assure a job well done."*

Specialising in driveway preparations, slab preparations
and footings, drains and all other earthmoving needs.

Call MATTHEW now on 0418 320 593 or A/H 6491 2308



Jarrad Camm The Handyman

Experienced, insured and
available for regular
maintenance or short
term maintenance.

JARRAD CAMM
jcammhandyman@gmail.com
044 778 1027

- Lawn Mowing
- Painting
- Roof Cleaning
& Repairs
- Outdoor &
Indoor
Maintenance
- Plastering
Repairs
- Fencing Repairs
- Solar Panel
Cleaning &
More!
- Servicing the
Kentish &
Surrounding
Areas

How to Boost Your Road Safety

Written by ProVision Eyecare and Stephen Scott-Hoy, optometrist, Exsighting Vision

As drivers, we're so focused on ensuring we have the best safety features for our cars. But all too often we forget the most the most important safety feature of all... OUR EYES.

We know that vision is the most important sense for making decisions on the road. Indeed, road safety starts with good vision, and that means seeing well at all distances, in all conditions. So, how can we improve our vision on the road?

Here are 5 options to increase road safety through better vision:

Vision Correction.

Safe vision begins with having a thorough eye examination with an optometrist. If you have an error in your vision wearing glasses or contact lenses improves your vision clarity and depth perception while driving, so you can better judge your surroundings. It is important if you are recommended to wear glasses for driving that you actually do so.

So...Have an Eye test before you crash test.

Progressive Lenses

Progressive lenses (three distances) improve vision at every range of distance, with a smooth transition from reading road signs in the distance to viewing the dashboard in front of you. They give

more flexibility than bifocals (two distances) or reading glasses (one distance). There are many designs available in progressive lenses so you should discuss your needs with your optometrist to find which is most suitable for you.

Anti-Reflective Coating

An Anti-reflective coating will reduces glare, light streaking and distortion from oncoming headlights, which is particularly beneficial for night driving as it reduces the 'dancing lights' on signs and reflectors.

Polarised Sunglasses

Polarising sunglasses eliminate distracting and sometimes dangerous 'horizontal glare'.which is caused by light reflections from surfaces including roads, other cars, and the dashboard. The low winter sun, paired with frosty or wet roads can cause sudden blindness for drivers. Filter bright light and reflections with a pair of polarised sunglasses and stay safe on the road.

Make Sure You Are Seen

Turn the lights on your car even during the day during winter so others can see your vehicle. Driving with headlights on even during the day helps other drivers see you!

At Exsighting vision we are passionate about helping you and your family enjoy a lifetime of healthy, clear vision. Call Nat at Exsighting Vision, 35 Gilbert Street, Latrobe on 6426140 to make an appointment.



VISION CHANGES CAN BE SUBTLE & GO UNDETECTED...



Do not be unprepared for winter conditions. Get your vision checked regularly.

We can HELP! Call 6426 1420, EMAIL exsightingvision@gmail.com, Our FACEBOOK PAGE, or Book Online on our WEBSITE. www.exsightingvision.com 35 Gilbert Street, Latrobe.




Mitchell
DENTURE CLINIC
6331 6616 | 0400 624 057

LAUNCESTON CLINIC
96 Tamar Street
drc.tiller@internode.on.net

LATROBE CLINIC
35 Gilbert Street
Provider No. 45256618

DARREN TILLER • DENTAL PROSTHETIST

Kentish U3A Inc Semester 2



(Continued from page 6) Please note there are some time changes. Contact your tutor if you need clarification on any issues.

And, don't forget there is a new course to check out. Paper Craft will start on Friday, 10th July at 10am at the Sheffield Uniting Hall. There are still a few places left so be quick and register with Judy on 0428 576 872.

MONDAY	
Tai Chi	10-11am Kings Hall, Railton - Sue 0409130767
Boules	1:30-3pm Boules Crt, Health Park- Nita 0437795374 - weather permitting
Crafters	1-3:30pm Working Art Space, Albert St (2nd&4th Mondays)- Ali 0410742012
Mosaics	10am-12:30pm Working Art Space, Albert St - Nita 0437795374
Film/Music	1-3pm Sheffield Uniting Church (1st&3rd Mondays) - Leoni 0429705062
TUESDAY	
Weigh-Me	12-1pm Sheffield Uniting Church - Lynne 0407240450
Table Tennis	2-4pm Sheffield Town Hall - Graham 0487222759
WEDNESDAY	
What Bird?	8:30 Don Store carpark - Paul - will resume in 2021
Bush Walking	9am Don Store carpark - Margaret M. 0421648123 (1st&3rd Wednesday))
Balance/Bones	9-10am Kentish Health Day Centre - Narelle 0407660272 (easy)
Art	11am-3pm Roland Art Gallery - Patricia 0438045062
Cryptic Crosswords	2-3:30pm Roland Ct (2nd&4th Wednesdays) - Margaret H. 64911175
THURSDAY	
Local/Family History	10am-12 Kentish Museum (2nd and last Thursday) - Barbara 64911180
Ukulele	10am-12 Sheffield Uniting Church - Jennifer 0400376937
Zumba	2-3pm Kentish Health Day Centre - Colette 0439426665
Book Club	4-5pm Sheffield Library, Henry St (monthly, last Thursday) - Jenny
FRIDAY	
Balance/Bones	9-10am Kentish Health Day Centre - Narelle 0407660272 (advanced)
Papercraft	10-11:30am Sheffield Uniting Church - Judy 0428576872
Gardening	1-3pm Blacksmith Cafe (1st/3rd Friday) - Leoni 0429705062
Topiary	1-3pm Railton Neighbourhood Centre (2nd&4th Fridays)-Leoni 0429705062
Kayaking	Contact Jennifer 0400376937 - weather permitting
SATURDAY	
French/German	9am - No vacancies till further notice - Jeanette 0427369159
Beginners German	11am - Vacancies - Elisabeth 0457738937

**Your Local Advertisers are here to support you.
Thank you for supporting them!**

July Crozzle

Arrows

Axe

BaggyGreen

Bails

Balls

Base

Baton

Bats

Bib

Board

Boots

Bow

Buggy

Cap

Clubs

Cue

Discus

Epee

Foils

Gauntlet

Glove

Goals

Goggles

Guernsey

Hat

Helmets

Hobs

Hoop

Irons

Jess

Kitty

Malibu

Mallet

Mat

S K C I T S B O H O O P E D B T S
 L C S P T A R G E T T E R I S U O
 I U W I X D E L S T O O B W T P Y
 O P O E E L T S I H W B A S E T G
 F U R P D T A M S S A S T S U O G
 Q A R R U C E S P I K E S B Q H U
 O O A H A T E L L A M E I G C S B
 D O S P M U T S T L J L R L A U A
 B A G G Y G R E E N A E U O R C T
 G O G G L E S H R M U B P V O S O
 T N W I C K E T I N S A E E P I N
 S K I T T Y E S N R E U G U E D B
 S N O R I A W E I G H T S C S C K

Mitt

Net

Oar

Pegs

Pin

Puck

Putter

Quoits

Racquets

Ring

Rod

Ropes

Saw

Shoe

ShotPut

Shuttle

Skates

Sled

Spikes

Sticks

Stumps

Sword

Target

Tee

Tie

Tub

Weights

Whistle

Wicket

All words go in a straight line but in any direction – Up, Down, Left, Right, Diagonal. Most words are joined to another word by at least one letter, so any letter may be used in more than one word. Circle the words in the graph as you find them and when all the words are circled, there will be letters left over, write these on the hyphens to discover the “Theme Word/s”.

Solution

Page 28

Bonus Challenge!

List Sports relating to the equipment list above?

e.g. Helmets = Bobsled, Car Racing, Gridiron etc.

June Crozzle Correction! Apologies!

E G D I R B D O O W L L I H
 L K O O N C R A N B R O O K
 A L S S D R O F R O E L C O
 D S O M H A N O O V D A U O
 S Y A A O S K A O I R O L R
 D A K S S T T C N T Y D L B
 O B W T S L R A D E B A E E
 O M O O A E N N L E G S N L
 W U O N T O A R A O S O S O
 K S D S O L E C O F W U W C
 C S Y L R T H N C R A D O C
 A O A E S O S Y E L M R O O
 L P V O R I E L T O N S D T
 B O G A T O O M S L A K E A

Score over 35 = Tremendous



- Engineering and fabrication
- Structural installations
- Manufacturer of ute trays and custom trailers
- Machine rebuilds
- Site installations
- Mobile line boring Machine
- Mobile welding unit
- Steel handrails and balustrades to AS 1428.1
- Agricultural equipment repairs
- Custom steel automatic gates
- On call services

Workshop:

12 Foster Street Railton 7304

Call: 0439 383 933

Email: info@jmrflh.com.au

Website: www.jmrflh.com.au

Timepieces Carpentry

Wilmot, TAS

Specialising in Fixout &
Restoration

Chris Honeywood

03 6492 1332 or 0414 852 849

Bakes Sawmill Pty. Ltd.



ABN 78 092 865

1369 Claude Road, Sheffield Tasmania 7306

Telephone: (03) 6491 1699,

Mob.: 0407 911 692 + Fax: 03 6491 1971

E-mail: bakes101@aapt.net.au

For ALL your TIMBER NEEDS !

DRY FRAMING, WEATHERBOARDS

GREEN TIMBER CUT TO ORDER

RAILS, PALINGS, GARDEN SLEEPERS

WOOD CHIPS, GARDEN STAKES (pointed)

OREGON BEAMS, STUDS & PLATES

SAWDUST & MILLWOOD FIREWOOD

DELIVERY AVAILABLE



CONTRACTING PTY LTD

ROAD CONSTRUCTION & MATERIALS

NOOK QUARRY

GRAVEL PIT ROAD, NOOK

◆ SUPPLY & DELIVERY OF GRAVEL

(Base A, Sub Base 1 & 2, Drain Rock,
Decorative Pebbles and Slab Fill)

◆ ROAD CONSTRUCTION

◆ GRADER, ROLLER, EXCAVATOR & WATER CART HIRE

◆ TRUCK TRAILER HIRE

Office: 11 East Goderich Street
Deloraine, Tas 7304

Phone Office: 6362 3782

Mobile: 0418 370 646

Crozle Solution "Sport Is Back"

Advertisement

Mark Shelton MP

Liberal Member for LYONS



Working to
strengthen regional
communities

Tasmanian
Liberals



(03) 6324 2080

f MarkSheltonMP

@ mark.shelton@parliament.tas.gov.au

10A Marlborough Street, LONGFORD 7301

Authorised by Mark Shelton MP, 10A Marlborough Street, LONGFORD 7301



Kentish Scout Group



Urgent Call

The children of the Kentish Shire, **your** children need you.

Kentish Scout Group needs your help.

We have lots of local children engaged in scouting activities, and the potential to welcome more, however, we are in desperate need of adults. Currently, we have just two Leaders and a skeleton Support Committee of four (filling five executive positions) with another 4 positions vacant). As it stands we have a solitary Joey Scout (5-7 years) Leader - we are legally required to have two; myself as Group Leader and Cub Scout (8-11 years) – again we are legally required to have two – one male and one female; and we have no Scout (12-15 years) leaders yet we have Scout-aged children.

We are at critical mass – we need Leaders, Parent Helpers, and more committee members.

Absolutely no qualifications are necessary: Section Leaders, Parent Helpers and Committee executive members are provided all the training they will ever require – a few hours a week is all you need for initial on-line training.

As a Section Leader you need only dedicate a couple of hours once a week to help run a globally successful program of educational and character-building activities, and maybe one or two days per months for weekend activities – bike rides, bush walks, canoeing/ kayaking, overnight camps to name just a few. Along the way you will have the opportunity to undertake specialised training and gain TAFE-level accreditation in areas such as Leadership, Business, Management and Outdoor Recreation.

I take no pleasure in saying it but if we do not get more adults involved, our Scout Group will be forced to fold and, given the enthusiasm shown by our current members and the apparent public support for Scouts in the Kentish community, that would be a terrible loss.

If you would like to help, please contact me on the number below.

Yours in Scouting



Stefan Redford
Group Leader
Kentish Scout Group

1 Roland Ct, Sheffield, TAS, 7306
lic.kentish@scoutstas.org.au
0448 106 126

Thank You to the many volunteers that help to make Kentish such a wonderful place to live, work and play!

Rousey's LOGGING

For all your timber harvesting requirements



Obligation-free appraisals
Eucalypt & Pine plantation
Native regrowth

Stuart
0439 911 354 facebook.com/RouseysLogging/ 

Friendly Staff
No Weekend Surcharge
Fantastic Rates
Local & Instate



For tips & reviews
search "Lighthouse Removals"
YouTube

LIGHTHOUSE REMOVALS

Mobile: Gordon: 0420 505 395 Office: Nikki: lighthouseremovals@gmail.com

**Your Local Advertisers are here to support you.
Thank you for supporting them!**

Dennis King & Gerald Davies
Expert local knowledge,
free appraisals, talk to us today.



DENNIS 0400 526 228 | **GERALD** 0418 126 089 | 48 Main Street, Sheffield | 6491 1499

THE BEST JOURNEY
always takes us HOME

   **Roberts** real estate
robertsrealestate.com.au

HERE TO HELP



Rebecca White MP
Labor Member for Lyons

✉ rebecca.white@parliament.tas.gov.au
☎ 6212 2225

For the latest health advice visit
www.coronavirus.tas.gov.au



ALLAN'S HOME FUMIGATION
PEST CONTROL & FUMIGATION
ABN 25 728 750 274

Scott Allan

A PO Box 299 Sheffield Tas 7306
E scott.allanapcaf@gmail.com
M 0429 900 609

END OF LEASE TREATMENTS
*
WASP NESTS

FOR ALL YOUR PEST NEEDS

Peace at Paradise

Self-Contained Holiday Accommodation

Sleeps 2-10 people
New & modern
Rural setting
Great Mt Roland views
Close to Sheffield township & Cradle area

Ph: 6492 1222
Fax: 6492 1222
Email:
enquiries@peaceatparadise.com
Web site: www.peaceatparadise.com



ABN: 35 601 663 441
C/L 1386226

Briggs Plumbing Tas

2 Douglas Street / PO Box 105E, East Devonport TAS 7310
Phone: 03 6427 8781 • Fax: 03 6427 8771 • Mobile: 0418 140 104
Email: admin@briggsplumbing.net.au

FOR SALE

WHEAT 20KG BAGS \$14
DRY FIREWOOD FOR SALE
0417 141399 or 0400 263 340

MICK DAVIES DOMESTIC WATER SUPPLIES The Davies family have been providing this service to the Kentish area for over forty years. Call 0417 581 593 or 6491 1911 for prompt reliable delivery. Anywhere anytime.

QUALITY 17 AWARD WINNING BERRY WINES & FROZEN BERRIES, MOUNTAIN FRUITS
10 Devils Gate Road, Barrington
OPEN 12Noon - 5.00pm ONLY
7 DAYS 6492 3194

DRY FIRE WOOD
3 Cubic Metres load \$270 Delivered
Phone Leigh on 0429 926 723



ISUZU TRUCK WITH CRANE1990
600,000 km. Registered to 20/8/20
Runs well. Serviced regularly. GVM 11T
Crane is operational & in use.
Selling due to updating to a new vehicle.
Ph: 0418 141 804

3 SEATER BROWN LEATHER
couch with reclining footrests on either end. Excellent condition. \$200 ONO
Railton phone 6496 1860

HARDWOOD KINDLING
\$8 per bag approx. 5 KG Local Delivery
Phone 0409 218 364



ITALIAN LEATHER MODULAR
dark timber w. side tables D/sizing \$900
cost \$3000, excl. con. 1 unit w. table/
drawer 1.1M + 3 cushions. 2seater 1.8M
wide, Cnr. 1sqM. 2 tallboy cabinets drk
wd 2.1M x740mm, 4 shelves+1 glass
\$200 ono, good con. can stand together
0430 436 690. Pick up Sheffield

CLASSIFIEDS

WORK WANTED

EXCAVATOR HIRE
20 TONNE MACHINE
Various buckets & log grab.
Dam Cleanouts, House Sites, Clearing
Reasonable Rates Railton & Surrounds
Phone: Rod 0448 338 992

ANN'S PET MINDING SERVICE
Your dog(s) visited in their own
home, or boarded in mine.
T: 6491 1846 M: 0487 675 021
E: annspetminding@iinet.net.au

8 TON EXCAVATOR/TIP TRUCK
11,000L WATERCART
Specializing in
- Driveways & Cow Lanes
- House Excavations
- Irrigation Mains
- Post Driving & Fencing
- Gravel Supplies
Call Tony on 0418911691

TRACTOR/TIP TRUCK HIRE
No mowing job too large or too small
from push mower to 1.8m slasher.
Trees trimmed, shrubs and stumps
cleared, rubbish removed, driveways
graveled and graded, ripping hard ground
and laying polypipe. Also have chipper &
hotwater pressure cleaner
Call George on 0419 000 947

BRICK OR BLOCK LAYING
New Homes & Renovations
No job too big or too small.
Professional Quality Work
Free Quotes. All areas
Phone Mark on mobile 0411 278 264

PICTURE FRAMING.
All your framing needs, photographs,
needlework, canvasses, etc
Phone George 0459 021 038

TREE REMOVAL Small & large trees.
Industrial Wood Slitter for hire. 20
tonne excavator for hire 0428 912 166

**Advertise in the
Classifieds for
\$2.00per line
(min 3 lines)
Display Ads
from \$35.00**

POSITIONS VACANT

**Would you like to
earn some extra \$
delivering
THE KENTISH VOICE
in RAILTON?
Please Call Doug on
0429 451 107**

BEEKEEPER

A large commercial pollination and
honey apiary on the north west coast is
seeking a casual beekeeper initially, that
could become Full time.

Minimum of 2 years experience in
beekeeping, truck & forklift license
would be an advantage.

Starting in September.

If you are interested send me your
resume, to petermjones68@gmail.com

Closes July 31st 2020

WANTED TO BUY

WORKING FERRET
Call Shane on
Mobile: 0400 957 847

WANTED KNOWN

**COMPUTER &
PHONE REPAIRS**
Phone Josh on 0408 387 541

LARGE ANIMAL & PET BURIALS ON-SITE

with respect

Ph Doug on 0429 451 107

PUPPY & DOG TRAINING

1-on-1 in home lessons or group classes
available.

Ph: Emma 0408 520 654
www.notonlydogs.com

**Send classified
or display ads
to [advertising@
thekentishvoice.com.au](mailto:advertising@thekentishvoice.com.au)
or to The Editor
12 Victoria St
Sheffield**

Possessing the Promised Land

(Old Wilmot Rd & Roland) by Alan F Dyer

In the late 1860s, three pioneer settlers on the Kentish Plains decided to explore the uninhabited hills that lay between them and the Forth River. They found these hills heavily timbered with excellent soil. Impressed, they told their neighbours, “*We have found the Promised Land.*” The name stuck and remains in limited use to this day. These original explorers were **James Boutcher** (from Somerset, Eng.), **Angus McNab** (Argleshire, Scotland), and **William Excell** (Welsh blacksmith who came to work the Tarleton coal mines).

In the 1870s James Boutcher purchased 310 acres of land which extended along the top of these hills as far south as the present township of Roland. There he built a basic slab house for his wife **Margaret** (12 chn) to become the first settlers in this new ‘Promised Land’. Soon afterwards, Boutcher sold a section of his large acreage to **Angus & Mary (Duff) McNab** (8 chn). **Wm & Eliza Excell** (10 chn) were the first settlers down what later became the original road to Wilmot. With their adult children, they acquired several properties, eldest son **Wm Jnr & Talitha (Carey) Excell** settling at the end of what is now *Byards Road*.

About this same time, Kentish’s back country began to be subjected to intense prospecting following Philosopher Smith’s discovery of tin at Mt Bischoff. Promising sites were located around Mt Claude and along the western side of the Forth Valley. In 1879, Northern Inspector for Roads **George Simmons**, together with Kentishbury Road Trust members **John Hope and John Duff**, inspected these new Mt Claude claims. For their return journey, these three men decided to bush-bash their way back down through Staverton and the Promised Land to Kentishbury. As there were no tracks, they felt sure they must have been the first white men to make this journey, which was probably not true. Simmons awarded Surveyor **James Dooley and Stephen Kelcey Jnr** the contract to cut a bridle track over this 24-mile route from the Promised Land through Staverton over Mt Claude to Gads Hill, which they completed by April 1881. Two years later in 1883, the pressure was on to open a direct route across the Forth River to its mineral-rich western side. From the Promised Land, Simmons and party tracked down through the rugged, heavily timbered country to the bottom of Forth River valley to examine the only suitable place to cross the Forth River for many miles in both directions. Let’s follow these developments.

Down the Old Wilmot Road

The Excell families were joined by **John & Agnes Harris** (12 chn). Both families were connected to the original Kentish Gospel Hall near Sheffield, so they commenced having cottage meetings together. Later Harris took over one of Excell’s properties to build *Corona Vale*. In 1903 **John & Linda Wilson** (12 chn) bought another of Wm Excell’s farms. Later, **Mrs Martha Kirkcaldy**, with her 8 remaining children, came from Foster’s estate, Kimberley, to settle down the old Wilmot road, having previously lost two small children to drowning, and her husband to the 1919 Spanish flu pandemic. Other early property owners down this road were **Angus McNab, Wm Mason, and Chas Billing** from whom *Billing Road* gets its name.

After George Simmon’s visit in 1883, he contracted the

construction of this much-needed bridge across the Forth River to **Patrick Oates**, and the formation of a connecting road between West Kentish & Wilmot to **Edwin Morse & Thomas Jubb**. It was 2½ miles (4km) down to the Forth River and 3 miles (4.8km) up to Wilmot. This vital new link was finally opened in September 1890, providing access to a whole new world west of the Forth River. The new bridge became known as *Lutterell’s Bridge* after **Robert & Annie Lutterell**, who settled there in 1888 to farm the fertile river flats. Some early Kentish settlers who purchased extra land here were **Wm Braid** (200 acres), **James Braid** (50 acres), and **James Morse** (45 & 55 acres). **William & Margaret Sherriff** (5 chn) lived at Lutterell’s Bridge until 1912 when they purchased their *Thorn Hill* property at 261 Carey’s road.

The famous Forth Falls, a series of seven spectacular waterfalls set amidst massive tree ferns, so close to the lush green river flats, quickly became a favourite picnic place and fishing spot for these early pioneers of Kentish. But the Forth River was always recognised as a treacherous river that rises rapidly after rain or snow in the back country, and over the years resulted in several drowning tragedies. As the township of Wilmot developed, some Sheffield businesses opened branch stores there while young Kentish farmers, particularly from Upper Barrington, sought new properties across the valley. This new access road not only connected Kentish to Wilmot, but also the Moina mines, Middlesex Plains, Cradle Mt, and Mt Bischoff; indeed for several years it was the main track to the West Coast.

On the basis of this vital connecting bridge, the **Municipality of Kentish** was created in 1908, embracing a large number of rateable properties on both sides of the Forth River. However, this all changed in 1968/69 when the newly created Lake Barrington began to fill. Lutterell’s bridge was flooded and this crucial connection between Sheffield and Wilmot was severed forever. They renamed the old, original Wilmot road going down to the bridge as Lutterell’s Road, while the Hydro’s recently-built road, down to their new Kentish Park Camping Grounds, became an extension of the West Kentish Road which now ends down at their Boat Ramp. Close by, the Lake Barrington Vineyard (one of the oldest and most picturesque vineyards in Tasmania) was successively established by **Dr Roger & Maree Taylor** in 1984. But 10 years later Roger Taylor died two weeks before his wife Maree gave birth to their daughter Alexandra. Today this award-winning vineyard is tendered by the **Von Peterson Klerck** family.

The Promised Land

In the early 1880s, Edwin Morse & Thomas Jubb were also contracted to widen the first section of *Dooley’s bridle track* up through the Promised Land towards Staverton for cart and wagon use. By 1889 new homes began springing up along this road, where a year or two ago it was dense scrub and forest. This prompted one old-timer to say, “*Listening to the stroke of the axe and the lowing of the cattle in the Promised Land, makes it sound quite home-like, reminding me of how it was 25 years ago in the older districts of Kentish and Barrington.*”

1893 Building the Baptist Tabernacle.

James Boutcher and Angus McNab were the driving force in

Possessing the Promised Land (Continued) by Alan F Dyer

extending the Baptist work to the Promised Land. In December 1890, they invited **Pastor Harry Wood** to hold preaching services in Angus McNab's barn. Two years later, Angus donated a prime site on his farm where a church was built by **Ben Martin**, assisted voluntarily by **Henry Boutcher (32)** and **Archie McNab (37)**. It opened on 24 May 1893 with **Job Nibbs** becoming Sunday school superintendent. This Baptist Tabernacle was erected on the main corner where the new road leading to Staverton branches off from the recently opened road to Wilmot. For the next century, this significant intersection was always called the *Tab Corner*. Seventy-five years later, the original wooden church was replaced by a modern brick structure, opened on 6 July 1968. A centenary service was held on 11 Nov 1990, but the church's demise came on 27 May 2011 when it was sold for a private home.

As we hinted earlier, James Boutcher built his original home adjacent to the future township of Roland. There being no road, Boutcher had to construct one to his selection through virgin forest, which he gradually transformed into fertile paddocks. He was also an active member of the Kentish Road Trust and a loyal supporter of the local Baptist Church.

Their neighbours **James & Lucy Byard** (10 chn) came from Chudleigh in 1891 to build their *Overdale* homestead. The Byards' properties included much of the future township of Roland. Tragically, just 3 years after their arrival, **James Byard Snr (48)** was killed by a falling tree while clearing his block in the presence of his two eldest sons **James Jnr (17)** and **Harry (15)**. **Mrs Lucy Byard (46)** was left with 10 children, the youngest only 3. Further down *Holmes Rd* were the **Stewart and Strawberry families**, who were joined in 1914 by **Thomas & Minnie Hall** (8 chn) who came from Deloraine. Other early residents in this district included the **Jopson & Poulton families**.

Rise & Decline of Roland Township.

In August 1912, the Government announced that the long-planned Railton-Wilmot railway line, currently under construction, would now not continue to Wilmot, but would be terminated when it reached the Staverton Rd. The Minister added "*to continue the railway line down three miles into the Forth Gorge and back up the other side would be an extravagant waste of public money.*" The opening of the railway line from Railton to its new terminus beside the Staverton Rd occurred on 6 Nov 1914, and soon led to the forming of a new township. The Government purchased 100 acres to erect the railway station, station master's house, engine shed, big good shed, and several workmen's cottages.

To construct these buildings, **George Lockett** (who had a sawmill and small shop at the Dasher River bridge, Claude Road) opened a similar sawmill and shop at this new **Terminus**. Instead of continuing to cart ore from the Round Hill mine to Railton, **Les Day** won the contract for delivering it to the Staverton Rd Terminus, so he erected a cottage, a stable for 12 horses, and a hay shed right opposite the station. Further up the hill, his brother **Harry Day** built new saleyards where he sold cattle from the high country. On sale days he assembled buyers from around the State and as soon as the cattle were sold, they were loaded onto a special cattle train which left the Terminus that same evening.

So much was happening in the Staverton Rd Terminus that

in 1915, locals formed the **Staverton Terminus Progress Association**. It helped Wilmot farmers get their promised short-cut road (now *Cromwells Rd*) direct to the new Terminus. A Post Office was opened at the Railway Station where mail was distributed for a ¼ hour after the arrival of the evening train. But the Railway Department refused to install a telephone exchange at their Station. So sawmiller **George Lockett** stepped in and had both the Post Office and telephone exchange put in his small shop with his 20-year-old daughter **Lucy Lockett** in charge. The first telephone call came through on 21 Dec 1916.

1917 Gospel Hall & new General Store.

Several local families connected to the original Gospel Hall near Sheffield enthusiastically endorsed the idea of building a Gospel Hall at the Terminus. Mrs Lucy Byard donated a block right in the centre of the township. **J T King** Kentish councillor, and leading blacksmith of Sheffield, assisted by several local young men built the church which was opened 11 April 1917. One hundred years later they celebrated its centenary and continues to be used as a church today. Meanwhile, **John G Jackson** sold his farm down Carey's Rd to **Herb Byard** and came up to the Terminus and opened a large country store attached to the front of his seven-room house. His wife **Julia (nee Cables)** was his main helper and his daughter **Zilla Jackson** became the new postmistress. In 1945 Jackson sold out to **Bingham** of Ulverstone, followed by **George Braid, Harry Crosswell, Reg Howell, John Skipper, & Ken Terry**, before the shop burnt down in the 1980s.

The Terminus gets a new Name.

The Deputy Post-Master General wrote to residents suggesting their new township be called Dasher. But locals considered this confusing as Dasher had always been associated with Claude Road. At a meeting of the Staverton Terminus Progress Association held in the railway station's waiting room on 21 July 1917, several other names were suggested before the young post mistress **Lucy Lockett (later Mrs Cliff Pease)** suggested *Roland*. On a motion moved by **Adye Smith**, seconded by **Edward Weeks**, they agreed to recommend the name Roland. But the postal authorities rejected this name as Roland was already the name of a civil parish located between Paradise and Beulah. They counter-suggested Van Dyke. The matter was discussed again by the Staverton Terminus Progress Association. This time the local people pointed out that since they were living in the middle of the Roland Ward, which the new Kentish Council had created in 1908, their township should be called Roland. Within six months the matter was settled; the Postal Department relented, and the **Staverton Terminus became Roland**.

The Round Hill mine closed in 1927, greatly reducing the railways exports. At this time several houses at Cethana were removed to Roland, one being the home where **David & Pat Kirkcaldy** live today with their *Roland Art Gallery*. The Roland School was opened on 20 May 1925 but closed in 1938 when the building was removed to the Sheffield Area School and all local children were conveyed each day by the railmotor to Sheffield. After only being opened 43 years, the railway line closed in 1957. Changing methods of travel caused railway usage to decline until most of the local services, once available in this picturesque township, had disappeared. But the Roland district's superb views of Mt Roland have always assured it remains a popular place to live.

CHURCH NOTICES

Please note that restrictions due to Covid-19 for Churches have changed. Please contact the various Churches for guidance and current advice as this situation is constantly evolving.

Lower Barrington Baptist Church

Sheffield Road, Lower Barrington

Pastor: Rev Chris Aulich

The church will re-open for worship on Sunday 19 July at 10.00am All welcome on 19 July at LBBC recommence worship service for folk who are able to attend, in the main church and back room, with social distancing, and sanitising procedures. There are a few temporary changes to note, which are: no children, no Holy Communion, and no morning tea following the worship service.

The email services will still happen for those not able to return to church.

Two of our three Bible study groups are happening by skype and KYB is as normal.

All details from Steve: 0409 944 296



Sheffield Baptist Church

"Caring and Making a Difference in Our Community"

104-106 Main Street, Sheffield

Service Time 10:30am each Sunday

All most welcome – friendly atmosphere

Fellowship Tea every third Sunday 5:30pm - 7:30pm Favourite hymn singing, good food and fellowship

Ph: 6491 1150

ALL WELCOME

Holy Cross Catholic Church

High Street Sheffield Mass is celebrated every Sunday at 11am.

ALL WELCOME

Parish Office Ph 6424 2783



Anglican Churches

Church Service Times :

Railton

2nd Sunday H.C. 9 a.m.

4th Sunday M.P. 9 a.m.

Kimberley

1st & 2nd Sundays MP. 10:30 a.m.

3rd Sunday HC. 10:30 a.m.

4th Sunday Home Church 10:30 a.m.

5th Sunday No services

Roland Gospel Hall

Sunday Worship 10AM - 11AM

Fellowship (Family Service)

11AM-12NOON ALL WELCOME



Sheffield Bible Chapel

45 High Street Sheffield

"A caring church for the whole family"
The Sheffield Bible Chapel will not be holding services until further notice as

per government regulation

Enquiries please phone 6491 1447.

Youth Group Enquiries please phone

Daniel on 0459 900 299.

Always pray to have eyes that see the best, a heart that forgives the worst, a mind that forgets the bad, and a soul that never loses faith.

"Act as if what you do makes a difference. It does!"

William James

POLICE REPORT

With further easing of the COVID-19 restrictions, people in the community have greater freedoms to move about, gather and attend events and venues. This is great news, but we don't want to get ahead of ourselves. We still need to adhere to the guidelines set out by the government and the health department which can be found at www.health.tas.gov.au. We must remember that people are still returning to Tasmania from interstate where they may bring the infection with them. They are still required to quarantine but non-compliance has been detected by police recently involving persons returning from the mainland.

Kentish has seen a small number of break-ins occurring in the past month. There were three burglaries in the Railton area with two of the targets being businesses and the other a shed in town. Cash was taken from one of the businesses and nothing from stolen from the other business. A number of power tools were taken from the Shed. A small amount of cash was also stolen as a result of a business burglary in Sheffield.

If you have any information that may assist police with any mattercall police on the numbers provided.

Emergency 000 Non urgent 131444

Sheffield Station 6478 6012 Latrobe Station 6478 4099

WHATS ON IN JULY?

EXHIBITIONS

Jul 1st	Jul 31st	Karen Wakefield Mosaics Exhibition, Fudge & Good Coffee Gallery, (see page 21)
Jul 1st	Jul 31st	Daniela Selir Exhibition, High Tea Room, Fudge & Good Coffee, (see page 21)

REGULAR WEEKLY ACTIVITIES

Every Monday	U3A Tai Chi (Beginners & Advanced) , 10am - 11.00am ,Kings Hall, Railton (see page 26)
2nd & 4th Mon	U3A Creative Crafters , 1.00pm -3.30pm, WASS, 2 Albert St Sheffield, (see page 26)
	U3A Boules , 1.30pm-3.00pm,Boules Court, Health Park, (see page 26)
	U3A Mosaics , 10.00am - 12.30pm, WASS, Albert St, Sheffield, (see page 26)
1st & 3rd Mon	U3A Film & Music , 1.00pm - 3.00pm, Sheffield Uniting Church, (see page 26)
Every Tuesday	U3A Weigh Me , 12.00pm -1.00pm, Sheffield Uniting Church Hall & - Splash Aquatic Centre, (see pg 26)
	U3A Table Tennis , Sheffield Town Hall, High Street, Sheffield, 2.00pm -4pm (see page 26)
Every Wednesday	U3A Balance & Bones (Easy) , Kentish Health Centre, 9.00am - 10.00am, (see page 26)
	Young Performers Singing Group , 3.45pm -4.45pm, Sheffield Uniting Church (see page 21)
Not Pub Hol	Emergency Relief Program , Kentish Family Support House, 9.30am - 11.00am, (see page 12)
1st & 3rd Wed	U3A Bush Walking For Leisure , Meet 9.00am, Don Store Carpark, (see pg 26)
	U3A Improve Your Art Skills , 11.00am - 3.00pm, Roland Art Gallery,(see page 26)
2nd & 4th Wed	U3A Cryptic Crosswords , 2.00pm, 2 Roland Court Sheffield, (see page 26)
Every Thursday	Sheffield Mens Shed , Redwater Creek, Spring Street, Sheffield, 9.00 am –3.00pm (see page 16)
School Terms	The Green Room , (Ages 12-18)3.00-4.30pm (see page 12)
2nd & Last Thu	U3A Kentish Local/Family History , 10.00am - 12 noon, Kentish Museum, Main St, Sheffield, (see page 26)
	U3A Beginner Ukulele , 10.00am - 12.00pm, Sheffield Uniting Church Hall, (see page 26)
	U3A Zumba Gold , 2.00pm - 3.00pm, Activities Room, Kentish Health Centre, 1b Henry St, Sheffield, (see page 26)
Last Thu	U3A Book Club , 4.00pm - 5.00pm, Sheffield Library, Henry Street, Sheffield, (see page 26) TBA
Every Friday	Bread Pick-up , Kentish House, 9.00am - 10.00am, (see page 12)
	U3A Papercraft , Sheffield Uniting Church, 10.00am - 11.30am, (see page 26 & 6)
	U3A Balance & Bones (Advanced) , Kentish Health Centre, 9.00am - 10.00am, (see page 26)
	U3A Beginner Kayaking , (see page 26)
2nd & 4th Fri	U3A The Art of Topiary , 1.00pm - 3.00pm, Meet at Railton Neighbourhood Centre, (see page 26)
1st & 3rd Fri	U3A Gardening Sheffield , Meet Blacksmiths Café, 1.00pm - 3.00pm, (see page 26)
Every Saturday	Sheffield Mens Shed , Redwater Creek, Spring Street, Sheffield, 9.00 am –3.00pm (see page 16)
	U3A Café French/German , 9.00am, (No vacancies) (see page 26)
	U3A Beginner Café German , 11.00am, (Vacancies) (see page 26)
	Wilmot Museum , 11.00am - 2.00pm, Main Street, Wilmot, (see page 21)
Every Sunday	Wilmot Museum , 11.00am - 2.00pm, Main Street, Wilmot, (see page 21)

ADDITIONAL ACTIVITIES BY DAY AND DATE

Monday	Jun 29th	Thriving Tasmania Emerging Stronger Online Event, 4.00pm - 6.00pm , (see page 11) tasmanianway.org/ThrivingTasmania
Wednesday	Jul 1st	Dog Registrations Due , Kentish Council, (see page 13)
		Planned Re-opening of The Hub , 10.00am-2.00pm, (see page 17)
Thursday	Jul 2nd	Kentish Council Tree Planting Committee Community Meeting , 6.00pm, Kings Hall, Railton, (see page 13)
		Wilmot Produce Share , 6.00pm, Pioneer Park Shelter next Wilmot Hall, (see page 17)
Monday	Jul 6th	U3A Semester 2 Begins (see pages 6 & 26)
		Free Mindfulness Course Live Online , 6.30pm - 8.30pm, see page 6)
Tuesday	Jul 7th	Free Live Online Mindfulness Course for Depression , 10.00am - 12 noon, (see page 6)
		Free Live Online Mindfulness Course for Depression , 6.00pm - 8.00pm, (see page 6)
Wednesday	Jul 8th	Public Online Voting for Kindness & Compassion Awards commences , (see page 10)
Thursday	Jul 9th	Thriving Tasmania Emerging Stronger Online Event, 10am - 12pm , (see page 11) tasmanianway.org/ThrivingTasmania
Friday	Jul 10th	EOI for Tourism Operators for Free "Make Yourself At Home" Promotion , (see page 9)
Saturday	Jul 18th	Field Naturalists Group , 10.am, O'Neill's Creek Nature Walk Shelter, (see page 21)
Tuesday	Jul 21st	Kentish Council Meeting , 7.00pm, (see page 13)
Wednesday	Jul 22nd	Free Mindfulness Course Live Online , 6.30pm - 8.30pm, see page 6)
Friday	Jul 24th	Proposed Date to Re-open Borders Subject to Public Health Advice (see page 5)
		Free Live Online Mindfulness Course for Depression , 10.00am - 12 noon, (see page 6)
Friday	Jul 31st	Applications Close for Covid-19 Local Stimulus Grants , Kentish Council, (see page 13)

OTHER ACTIVITIES FOR THE DIARY - AUGUST 2020

Wednesday	Aug 26th	"What Do I Say? What Do I Do?" Online Workshop , 12.30pm - 3.30pm, (See page 4)
------------------	-----------------	--

x X x
HydrographiX



CARWASH
and clean

PH: 0424 653 314

KS
PLASTIC REPAIRS
POLY WELDING
CAR
VINYL WRAPPING
HYDRO DIPPING
PH: 0417 586 074

COVID-19
WE ARE STILL
OPEN FOR
BUSINESS!

TAKE THE OPPORTUNITY TO
GET YOUR CAR SANITIZED
At 42 Main Street Sheffield



**SHEFFIELD
MECHANICAL
& TYRE**

Give the
team a call
today!

1/36 CLAUDE ROAD
PH: 6491 1107

**HONEST, FRIENDLY
SERVICE & A
JOB WELL DONE
ARE OUR HIGHEST
PRIORITIES.**

INFO@SHEFFIELDMECHANICALANDTYRE.COM.AU

Thank you for supporting your local advertisers

CENTURY 21.
Banks Property Group

SELLING?

MENTION THIS ADVERTISEMENT
FOR FREE PREMIUM MARKETING
OF YOUR HOME*

*VALUED UP TO \$1,295

6424 5217
139 William Street
Devonport TAS 7310





72 Ballahoo Rd, Latrobe \$599,000 6 Bed 3 Bath 3 Car