

This is a header page for the  
**August 2024**

Edition of

## **The Kentish Voice**

It will enable you to view the  
edition as you would read it  
in hardcopy

When you open the PDF  
select view 2 pages at a time.



A Community Newspaper produced by Thema Pty Ltd  
[www.thekentishvoice.com.au](http://www.thekentishvoice.com.au)

Serving over  
**6000 residents in  
 Kentish  
 DISTRIBUTED  
 FREE**

ISSN 2202-2813  
 Established 2013  
 Issued Monthly  
**Vol. 12 No.2  
 AUGUST 2024**

# Premier hears concerns first hand



small business all had the opportunity to speak with the Premier, with an invitation to offer feedback, share their local stories and put a face to the active groups of Kentish.

Former Kentish Citizen of the Year and active community member Leoni Read spoke to the Premier and Mr Parry (*left*) about an upcoming film competition to address the issue of littering in the municipality. (See story, page 8) Leoni organises monthly roadside clean-ups among many other initiatives to beautify Kentish.

The Premier thanked everyone for their contribution to their local community.

“Many topics were discussed, including the recent significant damage to the local football and cricket clubrooms, local business opportunities from KaLIBA and the important work of Kentish House,” he said. “We will continue to invest in our regions to build stronger communities.”

Premier Rockliff and Mr Parry visited other businesses, including Treloar Civil and Quarries.

Tasmanian Premier Jeremy Rockliff visited Sheffield on July 26, meeting with representatives from dozens of Kentish organisations to hear their concerns.

About 50 people attended the community cuppa at the Sheffield Bowls Club, where Premier Rockliff introduced Stephen Parry, the Liberal Candidate for the Legislative Council seat of Montgomery to be contested next year.

Representatives from local community groups, sports clubs and

## Funerals done differently...

A personalised and unique approach to final farewells. From cocktails and canapes at sunset, a farewell on the beach, in the backyard, the paddock or a favourite club or venue – to no funeral at all. The Funeral Collective is competitive on pricing and has many locations for farewells located along the coast.

Call or drop in to grab our Funeral Blueprint booklet to help you plan your final goodbye - Dying Done Differently.

Our Collective Cafe is the first Wednesday of each month pop in and have a chat. Staff are available until 7pm.

[www.thefuneralcollective.com.au](http://www.thefuneralcollective.com.au)

**6451 5889**

Office:  
 92 Formby Rd,  
 Devonport

**FC**  
 THE FUNERAL COLLECTIVE

Instagram and Facebook icons.

# THE KENTISH VOICE

Circulated FREE in the Kentish Municipality  
and FREE download from the website  
[www.thekentishvoice.com.au](http://www.thekentishvoice.com.au)

The Kentish Voice, 12 Victoria Street  
Sheffield TAS 7306

Published by Thema Pty Ltd  
as trustee of the Douglas George Begg Family Trust  
ABN 53 646 737 964

Editor : *Heather Eiszele*

Assistant Editor : *Lesley Begg*

Contact for Editorial:

[editor@thekentishvoice.com.au](mailto:editor@thekentishvoice.com.au)

Contact for Advertising: *Lesley Begg*

[advertising@thekentishvoice.com.au](mailto:advertising@thekentishvoice.com.au)

Phone: 0429 451 107

Website: [www.thekentishvoice.com.au](http://www.thekentishvoice.com.au)

---

Printed by Kentish Print  
12 Victoria Street Sheffield 7306

---

Deadline for advertising and articles is  
20th of the month for the next edition.

---

**Disclaimer:** While every care is taken, the publishers of *The Kentish Voice* cannot be held liable for any publication errors in written material or advertisements. Views expressed by contributors are not necessarily those of the Editor or Staff. The Editor reserves the right to exclude any contributor or advertiser at their discretion. Some material may be abbreviated due to space availability. ©Copyright Thema Pty Ltd 2024 All rights Reserved

---

## Rowing regatta offers a bonanza of potential

**EDITORIAL** Businesses are being encouraged to take advantage of the unique opportunity presented by the National Rowing Championships at Lake Barrington in March next year.

Rowing Tasmania convened a community forum last month to outline the potential for businesses – from tour operators to wineries – to benefit from the surge in tourists during the two-week event.

About 2000 athletes, 500 support staff and 5000 spectators are expected to attend the event from March 24-30. Teams will begin “bumping in” from March 17.

Opportunities are available on the shores of Lake Barrington to supply the athletes, their families and spectators with a range of options, from food vans to energy products, during competition.

Accommodation will be at a premium throughout Kentish so people with vacant land could consider opening up their properties for caravans or campers.

Main street businesses might consider longer opening hours to cater for the increased traffic going past their shopfronts to and from Lake Barrington.

Those with specific offerings, such as gin tastings or berry

picking, might even organise to bus people from the lake to their place and back to their accommodation. Take note, bus hire companies.

Consider what makes us unique and package that up for a hungry audience. A lot of spectators will be looking for something to do if they're only watching one or two races. They might like to sample honey products dipped in whiskey, watch a wood-turning demonstration, hike Mount Roland, explore the bush tracks, swim in a river, kayak beneath a waterfall ...

The potential is astounding; the economic benefits incredible.

Volunteers are being recruited for the event with 200 needed to make sure people get where they need to be and that things run smoothly. This is another opportunity to promote our region as locals show off their knowledge of the stories behind our murals, our fascinating history and the sense of community in Kentish.

Rowing Tasmania is developing a marketing plan ahead of ticket sales in December. Now is the time to think of ideas and present them for consideration. Email [admin@rowingtasmania.com.au](mailto:admin@rowingtasmania.com.au) or phone 0482 769 464.

Opportunities are as endless as imagination.

*Heather*

## HOW TO GET YOUR COPIES OF THE KENTISH VOICE

2700 copies DISTRIBUTED to Pick-up  
points in Sheffield, Railton & Wilmot areas  
as well as outlying communities.

Or you can read a copy at:

- o Mountain Mummas o Bossimis Bakery
- o Tasmanian Farm Shop o Epicurean Cafe
- o Sheffield Library o Moo Choo Take Away

You can DOWNLOAD A COPY of

The Kentish Voice

from our Website:

[www.thekentishvoice.com.au](http://www.thekentishvoice.com.au)

OR Subscribe to have a link  
delivered to your Inbox free

OR by Post (P&H costs)

OR find a list of Pick-up Points



# Farmer Jack is looking for love on reality TV

The magnificent Kentish countryside will be highlighted on national television when dairy farmer Jack L appears on the popular television series *Farmer Wants a Wife* on Channel 7 next year.

Jack will be promoting not only his hopes for the future but the tourism potential of the region.

"While we wish Jack the best of luck finding his true love, we also hope viewers fall in love with Kentish," said Sandy Brattstrom, president of Kentish Arts, Commerce and Tourism.

"It really is a magnificent opportunity to show the whole of Australia how beautiful this little patch of Tasmania is."

Jack is one of eight eligible farming bachelors vying to compete on the 2025 *Farmer Wants a Wife* series.

He runs a 400-acre property at Railton and milks around 350 cows. "I have a real love for animals, it makes me love what I do even more," he said. "My main concern is looking after the herd and making sure they're all content."

Jack's family are viticulturists turned dairy farmers. "My whole family has stuck with farming - being on the land is just a non-negotiable for me."

Jack describes himself as reliable, hardworking, honest and creative. "I'm a woodworker and I'm a bit of a home mechanic," he said. "I love restoring vintage cars."

"And I also love to play guitar and sing."

He prides himself on his work ethic and dependability. "I put a lot of effort into the business and I take a lot of pride in the farm. I always put in the extra bit of effort to make the place beautiful and to make sure the animals are well looked after."

Jack said he's ready for love. "Love is my number one priority and I'm ready. I'm ready for love. I want this more than anything. It would complete the picture for me."



*Railton dairy farmer Jack L: reliable and creative.*

He hopes to be married or engaged in five years and children are a definite. "I've started building a house and I'd hope to be living there with my wife and maybe a couple of kids on the way by then."

Jack is looking for a girl who is down to earth with "girl next door vibes".

"Someone with a calming temperament and enjoys the simple things in life. A girl who is family orientated, with a good sense of humour and willing to move to the country for me. Someone who wants kids, too!"

He said time together was the number one thing for him. "My love language is definitely quality time. It's not necessarily going out or anything fancy but just being able to share those everyday moments with someone special."

"When you're in love, you need to compromise with your partner and put the relationship above the needs of the individuals. Love is a team sport. For me it's got to be wholehearted. When I'm in, I'm all in."

## CRACKPOT CAFÉ

### WINTER MENU

Homemade Soups served with damper  
Range of fun pancakes  
Scones on steroids  
Light Meals inc. Gluten Free options  
Refreshments



**10am - 3pm daily**

Just 10 minutes from Sheffield

500 Staverton Road, Promised Land Tasmania (at the entrance to Lake Barrington Rowing Course)

Phone: 6491 1934 enquiries@tasmazia.com.au

Mazes Open 7 days 10:00AM -4:00PM -- LAST MAZE ENTRY 3:00PM

(CLOSED CHRISTMAS DAY)

**Next Screening of "The Legacy of the Laird of Lower Crackpot" Railton RSL  
6pm Saturday 17<sup>th</sup> August. Gold Coin donation to Railton RSL**

# A Generous Gift given to Railton

Residents of Railton have a vibrant new addition to admire - a striking mural on the main street.

The artwork, a colorful depiction of local wildlife and natural scenery, was created by Railton artist Janine Poke and her daughter Zeenah Mamonski and was the winning Mural Fest entry for 2022.

The inspiration behind the mural titled: *A Generous Gift* was based on the story of Norman Sykes who was a long-time resident who bequeathed his piece of paradise to the youth of Railton, to be kept as a sanctuary.

This mural, on the side of the redeveloped corner property, is the latest installment in the ongoing Tasmanian Mural Trail project, which aims to beautify Tasmanian communities while celebrating their unique heritage and natural beauty.

The Mural Trail, once complete, will feature a series of artworks leading through various parts of Tasmania, offering both residents and visitors a visual and cultural journey.

Janine said: "My daughter and I are so excited to be part of such a great concept and are thankful for being sponsored by local businessman Steven Rand. It's great to be able to have it displayed on his building and be included in the Trail."



Mural Curator Julian Bale praised the mural saying, "This mural not only adds beauty to the town of Railton but is also a testament to our pride in our local environment and heritage."

He said he was delighted the project was now underway. "The Mural Trail initiative has been well received by the community, with many locals eagerly anticipating the first stage of the Tasmanian Mural Trail being launched during the 40th Year Mural celebrations in Sheffield."

## Grants for social cohesion

Applications are now open for the Social Cohesion Small Grants Program 2024 for innovative projects that foster social cohesion and address racism in Tasmania.

Minister for Community Services Roger Jaensch said grants of up to \$25,000 were available to eligible projects that encourage a sense of belonging for migrants and refugees.

Applications close on August 30. For more information, please visit [dpac.tas.gov.au/divisions/cpp/community-grants](http://dpac.tas.gov.au/divisions/cpp/community-grants)

 <p><b>Kentish House</b> 16-18 Station St, Sheffield Mon-Thu 9am-4pm &amp; Fri 9am-2pm Ph. 6491 2322 / 0447 325 343 <a href="mailto:kentishhouse@glenhaven.org.au">kentishhouse@glenhaven.org.au</a> <a href="https://facebook.com/kentishhousetas">facebook.com/kentishhousetas</a> <a href="https://instagram.com/kentish.house">instagram.com/kentish.house</a></p>
<p><b>FREE LEGAL INFORMATION APPOINTMENTS</b> North West Community Legal Centre are offering <b>FREE</b> legal information appointments at Kentish House. To make an appointment please contact North West Community Legal Centre <b>6424 8720</b>.</p>
<p><b>KENTISH HOUSE PLAYGROUP</b> Enjoy play time and activities with your child/ren 0-5 years. <b>Tuesdays 9:00-11:00am during school terms</b></p>
<p><b>MR PERFECT BBQ</b> Gents of Kentish you are invited to a <b>FREE</b> blokes BBQ <b>Saturday 31st August 2024</b> <b>11:00am - 12:30pm Health Park Sheffield *</b> In case of bad weather join us at Blacksmith Café for a hot drink and chat</p>
<p><b>SERVICES AUSTRALIA (CENTRELINK)</b> Visiting Sheffield (9:30-11 am) and Railton (12-12:30pm) <b>Wednesday 28th August.</b> Contact Kentish House to book specific appointment times alternatively, walk-ins are welcome.</p>
<p><b>FOOD PICK UP &amp; BREAD PICK UP AT KENTISH HOUSE</b> <b>Food &amp; Bread Pick-up: Wednesday's 9:30 - 11am</b> Amounts available vary, items available are on a first in-basis.</p>



**DPRMT**  
THE ANSWER TO A QUICK RECOVERY

Back, Neck, Shoulder and Ankle issues, Sciatica, Muscle Tears or Strains including Hamstring, Quad and Calf, Osteitis Pubis & More

**Diego Pellegrini**  
Remedial Massage Therapist

 [dprmt\\_diego\\_pellegrini\\_rmt](https://www.instagram.com/dprmt_diego_pellegrini_rmt)

 [DPRMT](https://www.facebook.com/DPRMT)

 496 Lower Beulah Road LOWER BELLAH TAS 7306

 0434 053 971

 [diegopellegrini197@gmail.com](mailto:diegopellegrini197@gmail.com)

Check out my Facebook and Instagram pages for my client testimonials  
Please call 0434 053 971 for any queries and appointments



## Music in its many forms fills church hall

Music, Music, Music!

So many groups meet at Sheffield Uniting Church, corner of Main and Henry Streets. We have groups learning... harp, accordion, drumming, guitar & ukulele.

Enjoy singing? There are not one, but two singing groups in Sheffield! Got the mid-winter blues? Find out how uplifting singing can be!

The Mountain Echoes have been singing for the last five years. Originally with a youth focus, it is now open to all ages. A talented and dedicated group, it has been involved in many community events. Constantly developing new skills, we have some really accomplished performers.

At present our members' ages range from 11 to 77. The group is led by performer and music teacher Mark McCormack and his wife Sandra. Mountain Echoes welcome all ages, from 4-5pm on Wednesdays.

The Sheffield Singing Group has started quite recently, under the direction of well-known singer and musician, Rosie Haden.

Concentrating on singing popular, folksy, middle-of-the road songs, the group has really hit the spot. New singers welcome.

The Sheffield Singing Group meets from 3.30-4.30pm on Thursday afternoons. If you would like more information, please contact Leoni Read on 0429 705 062.

## Helpline for Mums of bubs

The Tasmanian Parenting Support Line, operated in partnership with Tresillian Family Care Centres, is operational.

Tasmanian parents can now freecall 1300 TAS BUB (1300 827 282) between 7am and 11pm, seven days a week – where they can receive telephone support and guidance from a specialist Tresillian child and family health nurse.

Ladieswear, Menswear, Children's wear, Footwear

**SLATERS**

EST. 1899

Open 7 days a week  
Come and see our friendly staff

FIND US ON  
**facebook**

52 Main Street, Sheffield, TAS 7306, 64911121

**LATROBE SADDLERY**

Alan & Anita Geddes

Factory 13, 15 Bay Drive  
Spreyton TAS 7310

Mobile 0418 467 655  
www.latrobesaddlery.com.au

# Neighbourly sewers meet to swap yarns



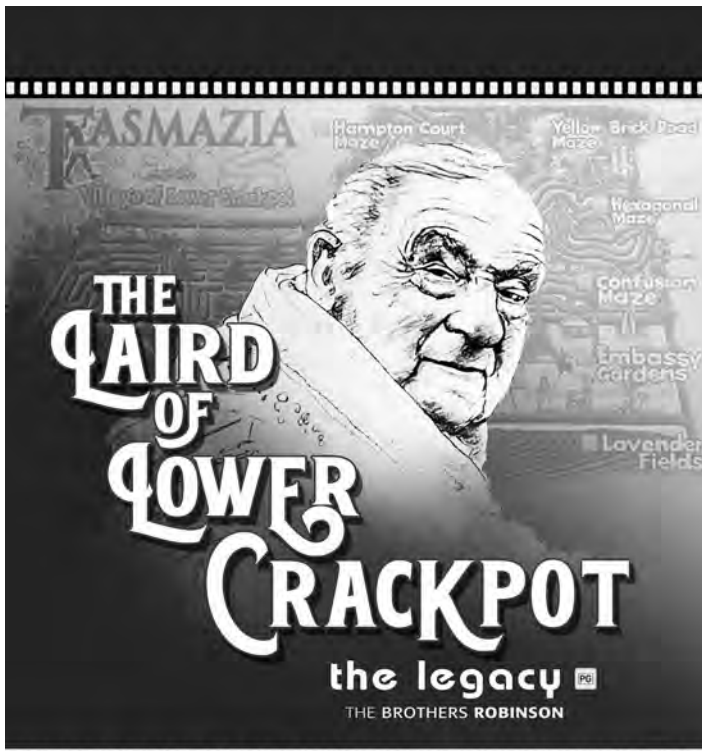
*Stitchers: Jane de Boer (left), Carm Porter and Sue Hinds.*

## Laird's doco at Railton RSL

The Railton RSL Club will host a screening of *The Laird of Lower Crackpot* on Saturday, August 17, at 6pm.

This compelling documentary follows a retired visionary who transforms a dying Australian community of murals into an Internationally recognized town as well as constructing one of the World's largest maze complex Through his ingenuity and determination, Lower Crackpot evolves into a vibrant hub of creativity and tourism. The film highlights the profound impact one individual can have on a community, turning despair into hope and obscurity into acclaim.

Don't miss this captivating story of resilience and transformation. Entry is gold coin donation to RSL.



**Railton RSL**

August 17, 6pm : Gold Coin Entry

After a year in her new home, Railton's Sue Hinds was keen to share her love of needlecraft with her fellow sewers, knitters and stitchers.

The former St Helens resident has started a patchwork group at the Railton Neighbourhood Centre on Mondays from 10.30am to 3pm where she hopes more needleworkers will gather to share their skills and passion.

As president of the Tasmanian Quilting Guild, Sue is well placed to offer guidance and ideas to new and seasoned stitchers.

"I love quilting, I've been doing it for 50-plus years," she said. "My second love is counter cross stitch, spinning, weaving, all the crafts that tag along with it."

Sue said the Railton Neighbourhood Centre was the perfect location for the many sewers around the area who couldn't travel to other groups in Sheffield, Latrobe or Devonport.

"It's a central location and makes good use of the extension – we wouldn't have been able to do this here before."

A sewing machine isn't necessary to join the group, with hand stitching and dressmaking encouraged.

"It's a combination of teaching and sharing," Sue said. "We ask questions of each other and look at other products being made - 'how do you do that?'"

For information, please contact Sue Hinds on 0436 035 333.

The Kentish Voice is seeking feedback in the form of Letters to the Editor. Please email: [editor@thekentishvoice.com.au](mailto:editor@thekentishvoice.com.au)

Enjoy playtime and activities with your child/ren 0-5 years.

New faces welcome.

Tuesdays 9:00-11:00 am during school terms.

Free tea and coffee.

16-18 Station St. Sheffield

# Brian Mitchell MP

ADVERTISEMENT

- ✓ **MORE JOBS**
- ✓ **HIGHER WAGES**
- ✓ **BIGGER TAX CUTS**



Authorised by Brian Mitchell MP, ALP, 53b Main Road, Perth, TAS 7300.



## WILMOT YARNS

TALL TALES & TRUE STORIES & TRADITIONAL COUNTRY SUPPER!



GEORGE RICHARDS



DENNIS MAXWELL

FREDA CLERKE

CONNECTING OUR PAST, PRESENT & EMERGING STORYTELLERS

**WILMOT TOWN HALL**

SATURDAY 14<sup>TH</sup> SEPTEMBER 2024  
7:00PM TO 8.30PM

GOLD COIN ENTRY

RSVP DIANNE 0499980246 LIMITED NUMBERS

WITH GRATEFUL THANKS TO OUR SPONSORS:



TASMANIAN WOMEN IN AGRICULTURE



ADVERTISEMENT



# Jane Howlett

Liberal Member for Lyons

*Working hard for you every day*



☎ 6165 9415 📍 32 Cole St, Sorell

✉ Jane.Howlett@dpac.tas.gov.au

Authorised by J. Howlett, 32 Cole St, Sorell TAS 7172



## SHEFFIELD FRUIT & VEG PROVIDORE

Mon – Fri :

8.30am - 5.30pm

Sat : 9am - 1pm

Pioneer Cres Sheffield

Phone: 0419 506 405

INSULATION SPECIALIST FOR OVER 35 YEARS



- 100% Bulk Fill Wool
- Wool Blend Batts
- Wool Under Floor
- Polyester Batts



**Supply or Supply and Install**

*Ceilings, Walls and Under Floor Insulation*

The Tough Wool Batt that stands up for itself worldwide!

Ph: 1800 804 366 Mob: 0419 917 794

Paul 'Bones' Sheehan

www.tasnaturalwoolinsulation.com.au

naturalwool@skymesh.com.au



# How do we keep our roadsides litter free?

By **Leoni Read**

“What a Load of Rubbish!”

Back in May, I sent a Letter to The Kentish Voice Editor on behalf of our Kentish Roadside Clean-Up group. At present our group has about 10 people, who were so disturbed by the amount of litter spoiling our roadsides and dumped in the bush that they decided to do something about it.

We having been holding Roadside Litter Clean-Ups for over a year, getting together one Saturday morning a month for three hours. Several members, including myself, are so concerned they go out more than once a month.

We have been doing regular clean-ups along our main Kentish thoroughfares: the Sheffield-Railton Road, Bridle Track, Claude and Nook roads.

I pointed out last time that the amount of litter we have picked up has not been going down. So many trailer-loads. We must have picked up tons of rubbish! And so much of it is recyclable.

When we clean up, we usually work in pairs, with one person picking up recyclable items – glass bottles, cans and plastic bottles - and the other person picking up landfill.

Half of the rubbish we pick up is recyclable. Half!

The same type of litter is being dumped in the same areas each time, even down to the same brands being thrown away in the same spots, most probably by the same culprits! Litter bugs are almost impossible to catch. I suspect most is thrown at night.

Obviously there is no easy answer. We are trying new strategies, including getting our Clean-Up teams to work on an achievable goal: a 2km stretch.

I put out an appeal recently for more volunteers and have had a really encouraging response. Next time we go out, which will be on Saturday, August 10, to tackle the Bridle Trail, there will be double the number of volunteers.

We could do with more volunteers so that we can clean up the entire length.

My other suggestion is Publicity. I would like the community to have a positive focus on keeping our beautiful countryside litter-free. It already has the focus and slogan of being ‘Tasmania’s Outdoor Art Gallery’. Let’s build on that... ‘Tasmania’s

Outdoor Art Gallery. Kentish. Too Beautiful to Litter.’

We are also announcing a Youth Short Film-making Competition

We now have a bunch of local kids trained in film-making, thanks to the recent Weindorfer Committee, who held Youth Film Making Workshops and a short-film competition.

We encourage these young people and others, to use their short film-making skills in a competition related to keeping our community’s roads litter-free.

The competition will have three sections: Under 12, 13-16, and over 16. It will run from August 1 to October 15, 2024. There will be substantial prizes.

Winners will be announced at the Youth Film Festival, which will be held during Mural Fest, November 3-9th.

Entry forms will be available from the Gear Café in Railton.

For more information about volunteering to help with Clean-Ups or about the Youth Short Film-making Competition, please contact Leoni Read on 0429 705 062.



Poster design by Carly and Luka Sullivan.

## *Kathryn Campbell*

### **INTRODUCING MY INDEPENDENT FUNERAL CELEBRANT SERVICES, WHERE PROFESSIONALISM, COMPASSION, AND SINCERITY MEET.**



With over 18 years as a civil celebrant, I offer heartfelt support in this trying time. My approach is centred on listening, allowing me to create a meaningful and authentic tribute that honours the individual journey of your loved one. I guide families with empathy and care, ensuring your loved one’s spirit is reflected in the service. I believe that every person deserves a farewell that captures the love and admiration they inspired.

**My passion lies in assisting people through this challenging event.**

**Reach out if you need a funeral celebrant. Together we’ll create a heartfelt tribute. Phone *Kathryn* 0407 510 857 - Sunnyside**

# KENTISH COUNCIL

## RATES REMINDER

All ratepayers will receive their rates notice soon. Full payment or the first instalment of rates for the 2024/2025 financial year is due on **31<sup>st</sup> August 2024**. A 2% discount is applicable to those who chose to pay their rates in full by the due date of **31<sup>st</sup> August 2024**.

## PENSION REMISSIONS

Are you eligible for a pension remission on your property for the 2024/2025 financial year? To be eligible for a remission you must be responsible for the payment of rates on the property, have a Pension Concession, Health Care or Department of Veteran Affairs card valid as of **1<sup>st</sup> July** for the financial year in which you are making a claim, and it must be your principal place of residence on the **1<sup>st</sup> July 2024**.

If you received a pension remission in previous years and your circumstances have not changed, you will not need to provide your concession details again and the remission will be automatically applied

## LARGE COMMUNITY GRANTS NOW OPEN

The Kentish Council Large Community Grants Program (\$501 - \$2,500) builds community capacity and resilience by supporting community-led projects. Round 2 of the Kentish Council's Large Community Grants for the 2024-2025 financial year will open on 1st August 2024 and close on 31<sup>st</sup> August 2024.

These grants aim to fund projects that support resources, programs, or services that:

- Promote community connection/cohesion
- Enhance the diversity of cultural, creative, health and wellbeing, recreational or social opportunities
- Develop partnerships between charities, community groups or other organisations
- Utilise local goods and services wherever possible
- Enhance Kentish as a prosperous, vibrant, and caring community.

### Eligibility criteria apply.

Applications must be submitted on the application form and be accompanied by financials and quotes. **PLEASE NOTE** that late applications will not receive consideration but may be held over to the next round opening in March 2025.

Prior to lodging your application, please contact Council's Community Development Officer, Darren Harris, on 6491 0200 or email [council@kentish.tas.gov.au](mailto:council@kentish.tas.gov.au) to discuss your proposal.

## NEXT COUNCIL MEETING

The next ordinary meeting of Council will be held at the Council office on **Tuesday 20<sup>th</sup> August 2024** commencing at 6:00pm.

## UPCOMING COMMUNITY MEETINGS

Sheffield Community Meeting Thursday 29th August 2024 7pm at the Sheffield Town Hall.

Railton Community Meeting Thursday 26th September 2024 7pm at the Railton Kings Hall.

Lwr Barrington, Acacia Hills & Sth Spreyton Community Meeting Tuesday 29th October 2024 7pm at the Lower Barrington Hall.

Wilmot Community Meeting Thursday 28th November 2024 6pm at the Wilmot Hall.

## COUNCIL WEBSITE CUSTOMER REQUESTS

Have you noticed something that needs our attention? Our website [www.kentish.tas.gov.au](http://www.kentish.tas.gov.au) features a handy "Customer Request" icon. You can use this icon to report maintenance items, road works requests, animal or general complaints or even make suggestions.

## LIVING NEXT DOOR TO A FARMER – PROMOTING GOOD NEIGHBOURLY RELATIONS

The Living Next Door to a Farmer campaign was created by the Tasmanian Farmers and Graziers Association (TFGA) and commenced in 2019.

The project objective is to educate and engage the community, with the aim to foster good neighbourly relations between farmers and residents in new and existing peri-urban locations.

You can access the booklet online or collect a hard-copy from the Council Office



PO Box 63, SHEFFIELD Ph. (03) 6491 0200 Office Hours: 8:00am – 4:30pm weekdays

Following an emergency e.g. flood, fire, windstorms etc. Council can be contacted for information and referral to support services.



# Give way in all directions at Roundabout

The Road Safety Advisory Council has covered the Top 10 Misunderstood Road Rules in Tasmania. As Sheffield is having a roundabout installed at the Main Street/High Street intersection, it is important that residents understand how to use the intersection to gain the most benefit.

The road rules are about keeping people safe – motorists, cyclists, pedestrians and motorcyclists.

## About roundabouts:

- Roundabouts significantly increase road safety, as they force drivers to slow down, which minimises crash impact.
- Head-on or Tbone crashes (which can happen at other types of intersections) are not as likely, because roundabouts change the angles at which vehicles approach each other at the intersection.
- Roundabouts also improve traffic flow, another important reason to stick to the correct give way rule.

## Entering a roundabout:

- **Drivers must slow or stop to give way to any vehicle already in the roundabout.**
- **Drivers must also continue to use their indicator if they intend to turn left, right or make a U-turn.**

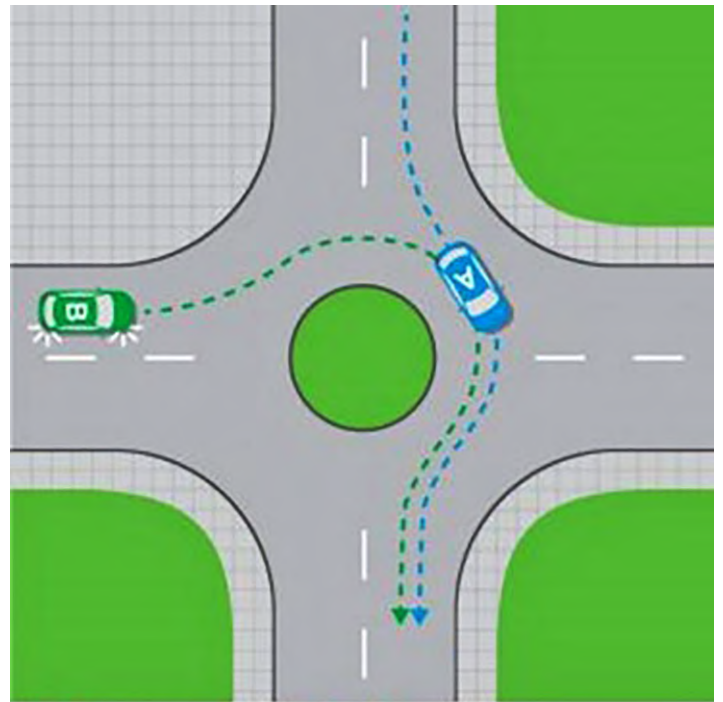
New drivers and visitors to Tasmania can join us on a video journey that explains the road rules.

**The 'give way to the right' rule does not apply to roundabouts.**

When approaching a roundabout, drivers must give way to all vehicles already in the roundabout, regardless of which

direction the vehicle on the roundabout is approaching.

For a booklet, please email [roadsafetyorders@stategrowth.tas.gov.au](mailto:roadsafetyorders@stategrowth.tas.gov.au); pick one up in a Service Tasmania store; or click here for an online copy at <https://www.rsac.tas.gov.au>



Car B must give way to Car A.

2024–2025 TO 2026–2027

## Three Year Wood Production Plan INVITATION FOR FEEDBACK

**Sustainable Timber Tasmania has released the annual update to its Three Year Wood Production Plan 2024–2025 to 2026–2027 to the Tasmanian community for feedback.**

The Three Year Plan identifies forest coupes across Tasmania's public production forests that are available across a three-year period from which a schedule of harvesting, roading and regeneration operations will be developed.

The release of the Three Year Plan provides an opportunity to identify which forest coupes and future operations may be of interest to you.

Inviting community feedback on the Plan is part of Sustainable Timber Tasmania's commitment to engaging with local stakeholders. Your feedback will be considered during detailed operational planning and decision making processes.

### How to provide feedback

-  **Visit** [sttas.com.au](http://sttas.com.au)
-  **Read** the Three Year Wood Production Plan
-  **View** the Access Map to identify which forest coupes may be of interest to you
-  **Contact** us with your feedback at [stakeholder@sttas.com.au](mailto:stakeholder@sttas.com.au) or (03) 6169 2800



Please visit [sttas.com.au](http://sttas.com.au) for more information about the Three Year Wood Production Plan



BC-STT0054

# Sheffield schoolboy in State RU team

New Zealander Zenon Latimer imported his love of rugby union when he moved to Sheffield in January last year, recently competing in the Southern States Junior Championship in Adelaide.

The 17-year-old halfback from Don College played for the under-18 Tasmanian team which competed against non-traditional states South Australia, Victoria and the Northern Territory in a four-day tournament.

And while the Tassie teams lost to the stronger competition, Zenon said they “didn’t get smacked around as much”.

“We stood our ground against Victoria and managed 15 points, which is pretty good,” he said.

The Devonport Bulls player had to qualify for the event, with 35 footballers competing for 23 spots at the state trials in Canberra recently.

A lot of the boys come from Hutchens school in Hobart with others hailing from Burnie, Wynyard and Launceston.

“We train on Tuesdays and Thursdays anywhere from Hobart to Launceston so there’s a lot of driving involved.”

Zenon was able to travel to Canberra and Adelaide due to the generous support of Kentish Lions, The Hub, IGA Sheffield and Kentish Council.

“If I didn’t live in this town, I don’t think I would have been



*On the fly: Zenon Latimer scoops the ball out to his winger.*

able to go,” said Zenon, who works part-time at the Sheffield Hotel and Bossimi’s. “I’ve fallen in love with this town.”

## SHEFFIELD FOOTBALL CLUB

Since our last update we have hosted our first ladies day and were excited to have the Mayor in attendance. All of our beautiful ladies of the Sheffield Football Club had a wonderful day and the food was absolutely magnificent.



It is tradition for Ladies’ Day to support a charity, so we chose the “Make Runs Maxi”, a mental health charity which is close to the hearts of many of our players. 50% of our ticket sales were donated and all proceeds from the raffle. We had raised \$1015 but then we received an extra \$185 from an anonymous donor which made our total \$1200!

Following on from our ladies’ fundraising, our men decided they wanted in on the action so both Shaun Bartlett and Adam “Big Dad” Garwood pledged to shave their hair into a “Skullet” (right). They raised roughly \$500 but in true Robin fashion all our boys managed to convince Senior Skip Liam Davies to follow suit and for his shave raised an additional \$500! A very fun night and each of them are still donning the look!

In some not so fantastic news, our clubrooms burst a pipe during our lowest temps for this year and flooded our club

rooms. We are super disappointed we are unable to host you all for the last home game of the season but are super grateful for all the help we have received. Thanks to the Spreyton Football Club who let us host our second last home game with full use of facilities. We have just secured the Ulverstone Football Club for August 3 Home Game prior to the finals.

We have witnessed Aaron McNab kick his second 100-Goal Season when he kicked 11 majors against East Ulverstone where we came away with the win. Our Seniors are having a cracking year and are looking strong moving into the finals.

Our reserves tasted their first defeat when we met Wesley Vale in round 9 and are hungry to make it 2-1 when we meet them on August 3.

The players have shown a keen sense of determination since that loss and are definitely trying to do their best off field to ensure they are able to play their best football on the field!

**Venue change: August 3 v Wesley Vale – Ulverstone Recreation Ground.**



## RAILTON PARKRUN



**Pacesetters: (from left) Nathan Rockliff, Marg McLachlan and Running Guy Troy Reader.**

### Shared Milestones

There have been quite a few milestones celebrated at Railton in recent weeks.

On June 15, we congratulated Nathan Rockliff who completed his 200th parkrun. It is worth noting that each and every one of these have been at Railton.

This represents a wonderful effort for Nathan and speaks volumes for Nathan's love of Railton's idyllic bush setting and friendly atmosphere.

On the same day Ryan Stoddart (AKA The Running Guy on Facebook) also ran in the Railton parkrun. Ryan, who has completed over 500 parkruns, is currently travelling Australia in a quest to reach an ultimate goal of completing every circuit.

After the run, Ryan said Railton was his favourite course in Tassie so far.

At the end of June, Troy Reader quietly completed his 300th run. Troy and his wife Kim (who at the end of June had also clocked up more than 166 volunteer parkrun events) are Railton regulars and are wonderful members of the Railton parkrun family.

On July 6, Margaret McLachlan completed her 250th parkrun. Margaret, who also volunteers regularly, has been involved in parkruns for more than six years and seeks out parkruns interstate and overseas when she is travelling.

A recent highlight was participating in events in Belfast and Glasgow. Other places Marg has been lucky enough to run, include South Australia, Victoria and Canberra.

Marg has taken the opportunity to complete other parkruns in Tasmania, including, Orford, Wynyard, Devonport, Westbury, Port Sorrell and Flinders Island. Zeehan is on the list for this year.

In her travels, Marg has completed the Main Beach Parkrun on the Gold Coast, which was where the first Australian Parkrun was held in April 2011. One of her memorable parkrun events was at Albert Park in Victoria, where she shared the 5km course with over 400 people.

The remaining 228 runs have been at Railton. Congratulations Marg, you are an inspiration to us all!

## RAILTON SQUASH CENTRE

The Railton Squash Centre is located in Gilbin Street, Railton.

We would encourage locals and visitors to Kentish to utilise this wonderful community asset, through the 'casual hire process'. Tokens operate the lights for the squash courts and are available from the Railton Motor & Tyre Service.

For further information or to register your interest in playing on a regular / semi regular basis, please contact Linda Cassidy on 0417 241 315.

- Kate Campbell, Secretary



## WILMOT INDOOR BOWLS

Come along to the Wilmot Memorial Hall on Monday evenings at 7pm for indoor bowls.

Bring \$2 for annual membership on your first night, then \$2 each week if you provide a plate of supper; \$3 if not.

It is fun, easy to learn, social with mild exercise, good for newcomers and veterans aged 9 to 90.

**The Kentish Voice is seeking input from sporting groups around the district.**

**Please email your news to:  
editor@thekentishvoice.com.au**



**RAILTON RSL**  
Sub-Branch

## GARAGE SALE

**10th August 2024**

**10am till 3pm**

**Railton RSL - 52 Foster Street, Railton**

If you would like to donate items for the garage sale to help raise funds for the Railton RSL sub branch, please drop off your items at Railton RSL on the following dates:

**July 10th, 17th, 24th, 31st**

**August 7th**

**12 till 7.30pm**

***All donation will be greatly appreciated.***

***SAUSAGE SIZZLE \$2.50***

**Contacts - Craig 0477 950 552 or Di 0400 035 995**

**Bar will be open**

## SHEFFIELD WOMEN'S NETBALL



For the coming netball spring roster at Devon Netball in Spreyton, we will be entering a Sheffield women's team into the draw. It has been awhile since Sheffield had a presence in the women's competition, so we're excited to get this up and running again.

We are running an information night at 6pm on Wednesday, July 31, at the Sheffield School gymnasium. The

purpose of the evening is to find out numbers, have a chat about options, throw a ball around on the court and register your details.

Usually the competition has three divisions and we will determine which division we enter depending on our confidence and levels of experience.

Depending on numbers, we might even get enough for a social team and a performance team.

The roster runs on Wednesday evenings at the Devon Netball centre in Spreyton from September 4 through to early November.

If you're interested, please either come along to our info night or get in touch with Carl (0400 068 790) directly by messaging or calling if you can't make it.

The objective of this is to provide pathways to play netball for both the women in the Sheffield community and our older secondary students.

Come along and play netball with your friends!

## SHEFFIELD GOLF

The cooler weather has presented some challenging conditions with icy fairways and frozen greens over the last few weeks. Special thanks to Mark Jones and Matthew Knight who have installed the automated watering system which will make an enormous difference when the weather begins to warm.

We would like to welcome our new members who have joined over the last few months: John Moore, Shadai De Giorgio, Ben Corbett, Michael Bailey, Martin Bakehouse, Rec Wallman and Scott Westbrook. It is great to see new faces around the Club.

*Monthly Medal Winners*

**Members:** Sponsored by IGA Everyday Sheffield was won by David Jago with a Nett of 66 with Mark Jones (67) and Peter Orchard (68) taking the minor placings.

**Vets:** Sponsored by Sheffield Tyre and Mechanical was won by David MacMillan winning on a countback from Glenn (Jimmy) Connors with a 69 Nett.

**Ladies:** Sponsored by Neil and Judy Denney was won by Janice Milner (69) with Janice Williams (70) coming in a close second.

A big thanks to our Sponsors of our Monthly Medals.

*Members:*

22 June – A 3 person Ambrose format was played with the Denney family comprising of Neil, Craig and Andre winning with a 56.833 Nett on a countback to Stephen Harris, Mark Jones and Matthew Knight. Coming in third was David Reeves, Greg Burford and Winston Duff with 58.3.

29 June – A Stableford event was won by Glenn Connors with 37 points on a count back from Stephen Hope (37) and David Jago (35).

13 July – An Ambrose 2 saw David Reeves and Greg Burford combine to win with a 60.5 from David Jago and Greg Collis (62) and Ryan Patterson and Mark Bramich (62.25).

*Vets and Ladies:*

Due to smaller numbers in the field on July 9, a combined Vets and Ladies Stableford was played with Doug Callander hitting a fine round with 39 points. Coming in second was Glenn Connors (38) and Helen Lloyd-Jones (34) third.

16 July – A 4BBB Stableford event saw Doug Callander and Michael Haberle with 45 points combine to win from Helen Green fees per day: Adults \$20 and Juniors \$5.

**SHEFFIELD STARBURSTS**

**SHEFFIELD WOMEN'S NETBALL TEAM**

Come to our info night!

**INFO NIGHT**  
 Date: Wednesday 31 July  
 Time: 6pm  
 Where: Sheffield School Gym  
 What: Meet, chat, throw a ball, register your details.  
 Comp: Devon Women's roster - Wednesday nights Sep to Nov

**CONTACT**  
 Carl 0400 068 790

CALL OR SMS ME IF YOU CAN'T MAKE IT TO THE INFO NIGHT BUT ARE INTERESTED IN PLAYING

**Mark Shelton MP**  
 Liberal Member for LYONS

Working to strengthen regional communities

Tasmanian Liberals Building future

(03) 6324 2080  
 f MarkSheltonMP  
 @ mark.shelton@parliament.tas.gov.au  
 10A Marlborough Street, LONGFORD 7301  
 Authorised by Mark Shelton MP, 10A Marlborough Street, LONGFORD 7301

Leonie  
**Hiscutt** MLC  
Liberal Member for Montgomery



**Let me know how I can help.**

Please don't hesitate to contact me if I can assist you, your club, group or organisation.

☎: 6425 8300    ✉: leonie.hiscutt@parliament.tas.gov.au

You'll find my office at 36 King Edward Street, Ulverstone  
**Office Hours: 9am-4:30pm | Monday, Tuesday - Thursday, Friday**

ADVERTISEMENT



Guy  
**Barnett**

Liberal Member for Lyons



📍 76 Emy Bay Rd, Deloraine TAS 7304    ☎ 6701 2170

📘 GuyBarnettMP    ✉ guy.barnett@dpac.tas.gov.au

Authorised by G Barnett, 76 Emy Bay Rd, Deloraine TAS 7304

**Sheffield Art Gallery**

6 Pioneer Crescent Sheffield    0475 810 981

Working Art Space  
Sheffield

*For the Love of Birds*

An Exhibition  
by local artist  
**Nita Pountney**



**Nita says:** "From childhood country walks, with my father, in the UK, I have always been aware of native birds and animals. This took a whole new pathway when I moved to Australia in 1976. My first Australian books were on trees and birds. I hope my paintings reveal this".

**August and September 2024**  
Open 10am to 3pm daily



**Sheffield Vet Clinic**

36 Main St, Sheffield

Phone: 6491 1556

Monday—Friday  
Saturday

8:30am - 5:00pm  
9:00am - 12:00pm

24 Hour Emergencies  
(Call only, no text, after-hours fees apply)

0499 744 533



**KMS TREE**  
SERVICES

- Certified Arborist
- Tree Removals
- Wood Chipping
- Corrective & Safety Pruning
- Hazardous Tree Assessment
- Mulch Deliveries

Mathew Stephenson  
0408 642 728

kmstreeservices@gmail.com  
www.kmstreeservices.com

www.d-signs.com.au

### KENTISH LIONS

The Club has continued its fundraising through monthly Bunnings Sausage Sizzles and Catering for Tasmanian Endurance Riders Club (TERC)

For the financial year 2023-2024, Kentish LIONS has donated more than \$32,000 to community needs.

In the past month we have provided \$500 to a young local person who is representing our State in Rugby.

We have a dinner meeting on the second & fourth Monday of the month. We enjoy each other's fellowship, often have a guest speaker and discuss club business. Guests are welcome.

If you are interested in supporting our community through LIONS, please contact Secretary Rudy at kentishlions@gmail.com or 0419 417 191. We welcome new potential members. We can only do the good work that we do with active members and our membership is ageing.

---

### KENTISH SCOUTS

This year's winter camp was just a small one consisting of five Kentish scouts who were joined by three City of Devonport scouts. This small group of intrepid hikers, along with our Scout Leader Raksha (Kylie) and our newly named Group Leader Bamboo (Adam) set off from Oliver's Road and battled through overgrown tracks, scrambled up over the huge rocks and were inundated with foul weather to find the absolutely stunning views of Mount Van Dyke and Mount Roland.

And while the weather didn't play fair, there wasn't a single complaint from any of the kids! They headed down Mount Claude to O'Neills Road and back to the den for hot showers, Silverside and veggies and apple crumble and custard. Sunday consisted of a Treasure Hunt throughout Railton and included the task of doing the Chicken Dance at the Railton Takeaway shop to receive a token.

Some of the Cub activities on offer this term include: First Aid, Tin Can Stoves, seed identification with Mount Roland Land Care and fire pit damper and hot chocolate night.

Some of the Scout activities on offer this term include an SES visit where we get to see them use the jaws of life; In Tent City - a night scavenger hunt in Devonport; a visit to North West Vet Clinic and swimming and water activities.

If any of these activities appeal to you, along with helping the youth of today achieve lifelong memories, please come along and see if you would fit in with our scouting family. You could be the reason for one of our scout's next core memory!

- **Tanya, KSG Chairperson**  
0438 559 317

---

### RAILTON MARKET

The Railton Market will be held on Saturday, August 10, from 9am to 1pm at the King's Hall.

The Friendly Market continues to welcome talented makers, bakers and craftspeople so the line-up is always changing. This month we welcome wind spinners, motorbilia and spices along with our popular regulars, including lollies, honey, handbags, cakes, knitting and embroidery.

Fruit and veggies will be for sale at the front plus plants.

The Apple Isle Carriage Club will on the BBQ, offering bacon and egg rolls as well as cold drinks.

### KENTISH MEN'S SHED

This wintry weather has our members seeking indoor employment which has seen some remarkable progress on various jobs that now are nearing completion.

Soon the Arts Centre shall have their 12 display pedestals. Aurora shall finally have their Pumped Hydro Diarama on display at the Information Centre and several smaller but no less important projects will soon be delivered to their (hopefully) satisfied patrons.

Freezing weather caused three copper pipes servicing our roof top solar hotwater system to burst but happily with no water damage within the shed. Seems that many Kentish residents have similar tales to tell.



Our picture of Andy Walsh at work on Dorothy (*above*) tells the story of just how determined Andy is as he has stripped Dorothy bare to the chassis. As quick as Andy is, it is hard to see Dorothy appearing in the Christmas Parade this year but, if he manages to have her mobile for SteamFest, we will be best pleased. Thank you Andy for your efforts.

Among our visitors we were happy to host Minister Jaensch, Leonie Hiscutt MLC and Wendy Kennedy, Tasmanian Mens' Shed Executive Officer.

We thank them for their visit and hope they carried away a good impression of Kentish and all her works.

The Kentish Community Men's Shed will hold its **Annual General Meeting** at the Men's Shed on Spring Street at 10am, **Thursday, September 12**. All members are urged to attend.

Visitors are always welcome and we are open 9am to 1pm Thursdays and Saturdays.

For information, please call Terry on 0429 122 520.

---

### KENTISH PROBUS CLUB

The next meeting of the Kentish Probus Club will be Tuesday, August 13, at 10am at the Sheffield Bowls Club. The Guest Speaker will be Sid Sidebottom re: Theatre and Entertainment.

Outing this month is a luncheon at Prem's Seafood Devonport.

Visitors are always welcome. For further information, please contact Annelise on 6496 1220.

## REDWATER CREEK STEAM & HERITAGE CENTRE

The next running days at the Sheffield Railway Station will be 3rd and 4th August. Come and join us for a ride on the beautiful Krauss locomotive. Prices for a ride are Adults \$10, Family \$20, children and concession card holders \$8.00. Trains run every half hour between 11.00 am and 4.00 pm at the Sheffield Railway Station.

The Model Railway will also be open from 10.00am to 3.00pm these running days. The Model Club has five different scale tracks running: HO, DC, HO Digital Command Centre, N and On30 with a timer and a big button for the kids to start the train. The Model Club holds work days on each Thursday and Sunday between 10.00am and 12 noon at the Sheffield Steam and Heritage Centre.

The Miniature train will be running on both days between 11.00 and 4.00pm. Rides are \$3.00 each.

### History of the Krauss Locomotive



The Krauss Locomotive at the front was built in Munich Germany in 1906. The Krauss is a composite locomotive built by the Second River Tramway in 1972 from the boiler and cab of 5682 a 2-4-0 with the underframe of 5800.

Number 5682 operated on the Sandfly Colliery line at Margate to 1921 then to the Ida Bay Railway to 1946. Number 5800 started out on the Zeehan Tramway running up and down the main street of Zeehan. Then to the Dunkley Brothers in Zeehan in 1935 and RJ Howard in 1952 when Renison Tin Mines purchased and used it to 1959.

In 1963 a group of four steam enthusiasts acquired these parts from Ida Bay and Renison Bell and together assembled the locomotive of today. It was completed at Karoola near Lilydale in 1972. In 1993 due to insurance issues some members of the group went looking for a new home. It was then that the Krauss made its way to Sheffield.

In February 1994, the little Krauss was chugging up the track and arriving at the Sheffield Station - the first train since 1957 on the Sheffield line. What a sight to see.

## SHEFFIELD RSL SUB-BRANCH

The Ulverstone luncheon went off well, we had four couples attending. The cannon now has a blackwood plug in the barrel thanks to the Mens' Shed, it looks great. We have some bottles of wine in the club with a label depicting the cannon and the mural, a good souvenir.

Our best wishes to Barb Wells in Latrobe hospital and we hope recovery goes well.

Vietnam Veteran's Day is August 18 at the Vietnam Memorial Park if weather is good or the Devonport RSL if raining. Service starts at 1100am. On September 2 we will have a social night. Bring your partner and a plate. Next meeting is Aug 5.

Lest We Forget

- George MacDonald, President

## WORKING ART SPACE SHEFFIELD

*Sheffield Art Gallery – 6 Pioneer Crescent, Sheffield*

'For the Love of Birds'

For the months of August and September the Gallery will be exhibiting the works of local artist, Nita Pountney. This selection of her artwork demonstrates her lifelong love for birds.

Opening hours: 10am to 3pm daily.

*Working Art Space – 4-6 Albert Street, Sheffield*

Printing classes: Every Tuesday between 10.30am and 2.30pm. Minimal cost of \$3.00 per person to cover inks and paper.

Contact Fay on 0400 491 272 or email faylilly@hotmail.com

Botanical Drawing: Saturdays from 1-3.30pm. If you would like to take part, please contact Colette Binder on 0439 426 665 for more information.

Pottery: Pottery workshops are now being held at Albert Street Gallery. Wednesdays from 10.00 am. \$20 membership and \$3.00 a week to attend either or both days.

Creative art workshops: with Susan Kennerley, suitable for all levels including beginners. Charcoal workshop August 16. Contact Susan on 0417 371 767 to book.

## RAILTON RSL SUB-BRANCH

By the time you read this, Christmas in July will have come and gone and it has been a big team effort to organise, prepare and cook the meal as well as have the bar open.

Tai Chi is happening every Wednesday at 12 noon for one hour. For a gold coin donation, it is open to everyone who wishes to improve their Health and Wellbeing.

We now have the Garage Sale to look forward to on August 10 at 10am. Please refer to the ad on Page 13. There will also be Donuts/Pizza/Popcorn available to purchase. Now is the time to sort out all the items you no longer have use for. Please bring your goods to the RSL during the times listed as the Sub Branch is not always open. Otherwise, please phone Di (0400 035 995) or Kay Buckley 0416 125 759.

There is also the raffle; prize is a trailer load of wood donated by Councilor Rodney Blenkhorn. The Help Save the Railton RSL Buy a Brick in the Dining room for \$20 is ongoing until there are no more Bricks available.

Please mark you diary for 6pm on August 17 to come to the film *The Laird of Lower Crackpot*, the story of Tasmazia and Mr Brian Inder. Entry is by a gold coin donation.

We thank each and every supporter who along with our Committee are digging deep, both financially and physically to be able to move forward. We welcome anyone who might wish to volunteer. By logging into our Facebook page Railton RSL Sub-Branch you can keep up with all our current activities.

- Kay Buckley, Secretary



**Bahá'í Faith.**

**“Let your eye be chaste, your hand faithful, your tongue truthful and your heart enlightened.”**

**-Tablet of Hikmat - Bahá'í sacred writings  
[www.bahai.org](http://www.bahai.org) 0448 976 442**

## Kentish Health Services & Programs Calendar – August 2024

Monday	Tuesday	Wednesday	Thursday	Friday
<p>All services/programs are free unless marked with an *. No bookings required unless marked with an **. Please contact Kentish House for more information: Ruby on 0497 780 216 or Cassandra on 0447 325 343.</p> <p><b>24/7 accessible defibrillator (AED) locations:</b> Railton Neighbourhood Centre, Wilmot Memorial Hall, Lake Barrington Rowing Centre, Kentish Council, Sheffield Post Office, Sheffield Bowls Club, LBCH, Cement Australia First Aid Room.</p>				
<p><b>5</b>  <b>6.30pm – 8.30pm:</b> Adults Support Young People Peer Group Chat (25's &amp; up) @ Headspace online  <b>6.30pm – 9.45pm:</b> Navigating Relationships Peer Group Chat (12-25's) @ Headspace online</p>	<p><b>6</b>  <b>9.00am – 11.00am:</b> KIDS Parenting Support (Playgroup) @ KH  <b>10.30am – 11.30am:</b> Fitness Class @ LBCH */**  <b>6.30pm – 9.45pm:</b> Qheadsapce Peer Group Chat (LBGTIQA+ &amp; allies, 12-25's) @ Headspace online</p>	<p><b>7</b>  <b>9.30am – 11.30am:</b> Food pick up for Kentish residents @ KH  <b>10.15am:</b> Ladies Social Badminton @ LBCH *  <b>6.30pm – 9.45pm:</b> General Coping Peer Group Chat (12-25's) @ Headspace online</p>	<p><b>8</b>  <b>10.30am – 11.30am:</b> Fitness Class @ LBCH */**  <b>6.30pm – 9.45pm:</b> Yarnspace Peer Group Chat (A&amp;TSI 12-25's) @ Headspace online  <b>6.30pm – 9.45pm:</b> Work &amp; Study Peer Group Chat (12-25's) @ Headspace online</p>	<p><b>9</b>  <b>5.30pm – 7.30pm:</b> Munting Taekwondo @ Sheffield School Gym *</p>
<p><b>12</b>  <b>9.00am – 12.00pm:</b> North West Community Legal Centre @ KH **  <b>6.30pm – 8.30pm:</b> Adults Support Young People Peer Group Chat (25's &amp; up) @ Headspace online  <b>6.30pm – 9.45pm:</b> Navigating Relationships Peer Group Chat (12-25's) @ Headspace online</p>	<p><b>13</b>  <b>10.30am – 11.30am:</b> Fitness Class @ LBCH */**  <b>6.30pm – 9.45pm:</b> Qheadsapce Peer Group Chat (LBGTIQA+ &amp; allies, 12-25's) @ Headspace online</p>	<p><b>14</b>  <b>9.30am – 11.30am:</b> Food pick up for Kentish residents @ KH  <b>10.00am – 12.00pm:</b> NDIS Mission Australia @ KH  <b>10.15am:</b> Ladies Social Badminton @ LBCH *  <b>6.30pm – 9.45pm:</b> General Coping Peer Group Chat (12-25's) @ Headspace online</p>	<p><b>15</b>  <b>9.30am – 4.30pm:</b> LBGTIQA+ Workshop @ Sheffield Town Hall */**  <b>9.00am – 11.00am:</b> Early Childhood Care Coordinator @ KH  <b>10.30am – 11.30am:</b> Fitness Class @ LBCH */**  <b>6.30pm – 9.45pm:</b> Yarnspace Peer Group Chat (A&amp;TSI 12-25's) @ Headspace online  <b>7.00pm – 8.00pm:</b> Carer Connections Peer Support Group @ online via Carer gateway **</p>	<p><b>16</b>  <b>5.30pm – 7.30pm:</b> Munting Taekwondo @ Sheffield School Gym *</p>
<p><b>19</b>  <b>6.30pm – 8.30pm:</b> Adults Support Young People Peer Group Chat (25's &amp; up) @ Headspace online  <b>6.30pm – 9.45pm:</b> Navigating Relationships Peer Group Chat (12-25's) @ Headspace online</p>	<p><b>20</b>  <b>10.00am – 11.00am:</b> Community outreach @ Wilmot Memorial Hall  <b>10.30am – 11.30am:</b> Fitness Class @ LBCH */**  <b>12.00pm – 1.00pm:</b> Community outreach @ Lorinna Hall  <b>6.30pm – 9.45pm:</b> Qheadsapce Peer Group Chat (LBGTIQA+ &amp; allies, 12-25's) @ Headspace online</p>	<p><b>21</b>  <b>9.30am – 11.30am:</b> Food pick up for Kentish residents @ KH  <b>10.00am – 12.00pm:</b> SFSK @ KH  <b>10.15am:</b> Ladies Social Badminton @ LBCH *  <b>6.30pm – 9.45pm:</b> General Coping Peer Group Chat (12-25's) @ Headspace online</p>	<p><b>22</b>  <b>10.30am – 11.30am:</b> Fitness Class @ LBCH */**  <b>6.30pm – 9.45pm:</b> Yarnspace Peer Group Chat (A&amp;TSI 12-25's) @ Headspace online  <b>6.30pm – 9.45pm:</b> Work &amp; Study Peer Group Chat (12-25's) @ Headspace online</p>	<p><b>23</b>  <b>5.30pm – 7.30pm:</b> Munting Taekwondo @ Sheffield School Gym *</p>
<p><b>26</b>  <b>9.00am – 12.00pm:</b> North West Community Legal Centre @ KH **  <b>6.30pm – 8.30pm:</b> Adults Support Young People Peer Group Chat (25's &amp; up) @ Headspace online  <b>6.30pm – 9.45pm:</b> Navigating Relationships Peer Group Chat (12-25's) @ Headspace online</p>	<p><b>27</b>  <b>10.30am – 11.30am:</b> Fitness Class @ LBCH */**  <b>12.00pm – 1.30pm:</b> Birth trauma peer group @ online, via Zoom **  <b>6.30pm – 9.45pm:</b> Qheadsapce Peer Group Chat (LBGTIQA+ &amp; allies, 12-25's) @ Headspace online</p>	<p><b>28</b>  <b>9.30am – 11.30am:</b> Food pick up for Kentish residents @ KH  <b>9.30am – 11.30am:</b> SA @ Kentish House  <b>10.15am:</b> Ladies Social Badminton @ LBCH *  <b>12.00pm – 12.30pm:</b> SA @ Kings Hall, Railton  <b>6.30pm – 9.45pm:</b> General Coping Peer Group Chat (12-25's) @ Headspace online</p>	<p><b>29</b>  <b>9.45am – 10.30am:</b> Community outreach @ LBCH  <b>10.30am – 11.30am:</b> Fitness Class @ LBCH */**  <b>11.00am – 11.45am:</b> Community outreach @ Roland Gospel Hall  <b>12.45pm – 1.30pm:</b> Community outreach @ Beulah Hall  <b>1.45pm – 2.30pm:</b> Community outreach @ Claude Road Hall  <b>6.30pm – 9.45pm:</b> Yarnspace Peer Group Chat (A&amp;TSI 12-25's) @ Headspace online</p>	<p><b>30</b>  <b>5.30pm – 7.30pm:</b> Munting Taekwondo @ Sheffield School Gym *</p>
<p><b>31 (Saturday)</b>  <b>11.00am – 12.30pm</b>                      Mr Perfect BBQ @ Sheffield Health Park (Blacksmiths Café if weather bad)</p>				
<p><b>A&amp;TSI:</b> Aboriginal &amp; Torres Strait Islander  <b>Community Outreach:</b> consists of KH, SA, Rural Health Nurse, Anglicare &amp; NDIS APM  <b>KH:</b> Kentish House  <b>LBCH:</b> Lower Barrington Community Hall</p>			<p><b>Sponsored by:</b>                      ACCESS 2  <b>Health Services</b>                      The Access to Health Services Project received funding from the Australian Government</p>	
<p><b>LBGTIQA+:</b> Lesbian, gay, bisexual, transgender, intersex, queer, asexual/agender + others  <b>SA:</b> Services Australia  <b>SFSK:</b> Strong Families, Safer Kids</p>			<p>Tasmanian Government                      Powering a Bright Future                      TasNetworks                      Kentish House</p>	

## KENTISH HEALTH SERVICES EXPO

Tasmanians living in rural and remote regions experience disadvantage in terms of access to healthcare and poorer health outcomes. To address this, Access 2 Health Services (A2HS) Regional Projects have been set up across the majority of municipalities across North and North West Tasmania. Rural communities in these areas will have more say in how healthcare services are provided in their regions, and better access to the health services they need through place-based approaches, which aim to build resilient communities.

Initial consultation with service providers in the Kentish area suggested that while there are a number of services in, and providing outreach to, the municipality, health promotion and health literacy could be improved for both community members and service providers. To this end, the first Kentish Health Services Expo was organised.

Despite the winter weather, the Expo still experienced a great turnout on Friday, July 19, with many people coming to learn more about the various healthcare services available in the Kentish community.

Fun was had by young and old with scavenger hunts, drunk vision goggles, hot sausages, purring kittens, and loads of freebies handed out by our visiting health services. It was a great opportunity to meet health services, get referrals, hearing tests, have blood pressure taken, and make plans for future health needs.

The A2HS Regional Project and Kentish House would like to thank the following services and not for profits that turned out to support this event:

Anglicare – KIDS Parenting Support Program \* Care2Serve \* Care Beyond Cure \* Devonport Chaplaincy & Loaves and Fishes Tasmania \* Equal Opportunities Tasmania – Office of the Anti-Discrimination Commissioner \* Family Planning Tasmania \* Hearing Australia Kentish Regional Clinic \* Kentish SES NW \* Lifeline - Standby Support After Suicide \* Lower Barrington Community Hall \* Mental Health Council of Tasmania \* NDIS APM Futures \* NDIS Mission Australia \* Pink Belt Foundation / Munting Taekwondo \* Riana Cat Project \* Rural Alive and Well \* SafeChoices Services Australia \* Stroke Foundation Turnbull's Pharmacy \* Youth, Families and Community Connections.

An extra big, appreciative thank you to the Kentish Regional Clinic who helped us with the morning set up, and the Riana Cat Project who stayed back to help us pack down the Hall.

For further information, please contact Ruby via email: [a2hskentish@glenhaven.org.au](mailto:a2hskentish@glenhaven.org.au) or text 0497 780 216.

The Access 2 Health Services Project received funding from the Australian Government.

**Mobile Massage**

Helen Wilson  
Kentishbury Mobile Massage  
Remedial Massage Therapist  
0428070368

## SHEFFIELD LIBRARY

August is National Family History Month, and Libraries Tasmania has a host of online and in-library resources to spark your interest or further your passion for all things family history! For more information on National Family History Month events please visit [libraries.tas.gov.au/NFHM](http://libraries.tas.gov.au/NFHM).

Are you interested in getting to know your family history, but not sure where to start? Our librarians and archivists have done the hard work for you and offer their best advice and handy hints on how to get started. Simply visit [libraries.tas.gov.au/family-history](http://libraries.tas.gov.au/family-history) to see information and resources available.

If you know you have Tasmanian heritage, the Tasmanian Names Index is a comprehensive database of Tasmanian records – all you need to do is search a name. Search through the Tasmanian prison records, or our Tasmanian Convict Records. You can use our specialised research guide to help identify whether you have Tasmanian Aboriginal ancestry.

If you're looking beyond Tasmania, the Ancestry website lets you search across Australian census, birth, marriage and death records, or military and immigration records.

### Book Review

*Bush Flowers: Australian flowers and foliage for decoration and design* by Cassandra Hamilton and Michael Pavlou

This comprehensive plant library is both practical and well written. It provides detailed descriptions, images, and information on where these plants thrive and how they will fare once cut. The advice on what to pair in a bouquet is precise and practical, establishing cohesiveness or contrast in an arrangement. Specific guidance on the most textured and sculptural plants is also useful. The photography is stunning.

- *Review by Michelle*

**Textiles @  
Sheffield Library**

Knitting, crochet, embroidery, cross stitch, weaving, patchwork or spinning - whatever textile craft you enjoy, take the opportunity to work on those unfinished crafty projects, start something new, or learn a variety of crafts from others in the group.

Second Thursday each month from 3:30 - 5:00pm  
At Sheffield Library, Henry street, Sheffield.

libraries.tas.gov.au

LIBRARIES TASMANIA  
Tasmanian Government

# August Crozzle

All words go in a straight line but in any direction – Up, Down, Left, Right, Diagonal. Most words are joined to another word by at least one letter, so any letter may be used in more than one word. Circle the words in the graph as you find them and when all the words are circled, there will be letters left over. Write these in the spaces below to discover the Theme Word.

Bay	T	S	E	R	O	F	S	N	S	A	N	D
Beach	M	D	E	O	K	O	E	R	S	B	A	Y
Black	B	N	T	N	U	R	D	N	O	R	T	H
Blue	U	O	I	T	R	Y	E	E	M	O	R	S
Bluff	R	P	H	A	R	E	L	L	H	O	E	U
Brook	R	N	W	O	R	B	L	A	C	K	V	B
Brown	O	F	V	G	L	B	E	V	A	E	L	L
Burrows	W	I	R	E	R	L	L	L	E	E	I	U
Bush	S	E	V	A	C	A	O	U	B	R	S	E
Cave	Y	L	S	S	E	O	S	W	F	C	S	U
Creek	R	D	N	T	P	A	M	S	S	F	E	S
Dell												
East												
Field	Lake	Silver	Vale									
Forest	Moss	South	Warren									
Grass	North	Tan	West									
Green	Pink	Teal	White									
Grey	Ponds	— — — —										
Hollows	Pool	— — — —										
Ivory	Sand											

## CRYPTIC PUZZLE TASMANIANS

1. Corn in a strange situation (7)
2. Di's anal rash flared up (5,6)
3. Proven, toasted crumbs responsible (4,9)
4. Some rest uncomfortably (8)
5. Cook me curry (7)
6. Minced liver? Never! (5,5)
7. I'm right off Nutrigrain. Prepared for a change (9)
8. Vile leek soup! (8)
9. ... with crushed raw grain (8)
10. In frypan fires douse flames with lid (4)



**Paradise Road  
Massage & Sauna**

Rumiko Young  
Remedial massage therapist

Now also in Devonport.  
Health fund rebates & sauna  
only available in Paradise.  
0487 602 513

# Vineyards are hands on

In mid-July, local vineyard owners, Ray and Deb McGinty, welcomed members of the Kentish Garden Club to the Devils Gate Vineyard to demonstrate vine pruning and to outline the care vines need to produce a glass of wine.

Owning a vineyard sounds idyllic, but it is very hands on and a long-term commitment that involves long hours of arduous work. One big annual task is pruning the vines which occurs during winter and early spring.

Deb and Ray demonstrated how pruning requires careful consideration as the vines are not just pruned for the next season's harvest but to prepare for the next three years.

Pruning requires dry conditions as rain during pruning may spread disease. To make the task easier, the McGintys use rechargeable powered pruners, which are fast and easy to operate. These vines are cane pruned but vines may also be spur pruned, which is the method often used by home gardeners.

To cane prune, most of the previous growth is removed leaving two long canes that will be tied horizontally to the wire trellises – one in each direction. The long canes are shortened when they are secured to the wires. Two further shortened stems are left below this year's canes to provide future growth that sets up production for the years ahead.

For spur pruning, growth is cut back to the main framework of trained stems. Long growth from the main stems is shortened. Around seven growth points per horizontal stem are selected to maximise bunch production.

After pruning, cuts are painted with a fungicide to prevent disease entering the stem. The woody parts of the vine that are removed are dropped on the ground to be mulched so that nutrients are returned to the soil.

Vines take around three years to become productive after planting. New vines require trellising – wires and posts – and each plant needs to be protected from browsing animals and weeds with a special guard. The vines also need irrigation, especially during summer, fertilising, lime, protection from fungal diseases and protection from any late frost that occurs after re-leafing in spring. Any damage to new growth reduces production. During the year, the vines also require further training and must be weeded.

As the grapes ripen in autumn, the vines are netted to protect the crop against birds, which swoop in to feed on the grapes. Harvesting occurs over several weeks in late April. Devils Gate Vineyard is one of the last vineyards harvested in Tasmania each year due to its cold location and slow ripening. The vineyard produces sparkling wine (from Chardonnay and Pinot Gris grapes), Pinot Gris, rosé and Pinot Noir.



*Ray McGinty demonstrated grapevine pruning in his vineyard at Barrington.*

## Next meeting and AGM

The next meeting of the Kentish Garden Club is on Thursday, August 8, 2024, at 6.30pm at Sheffield Golf Club, 214 Nook Road, Sheffield for the AGM, which will be followed by the Club's Annual Dinner and a talk by Jennifer on the recent Chelsea Flower Show. All welcome but RSVPs are essential. Call Jennifer Stackhouse (KGC President) on 0488 047 011.



**KENTISH SOCIAL  
CRAFT GROUP**

**Join us for some craft and a chat.  
Craft is supplied or BYO craft.**

**TERM THREE 2024**

Friday 26th July. 9 am - 11 am  
Friday 2nd, 9th, 16th, 23rd, 30th August. 9 am - 11 am  
Friday 6th, 13th, 20th, 27th September. 9 am - 11 am

*All craft sessions are held at Kentish House*

### **MARTIN (nee Gehle)**

**Margaret Anne**

06.06.1932 ~ 17.7.2024

Quietly passed away at Karingal.  
Loved wife of Peter, loving mother of  
Christopher and Vivian.

Mother-in-law of Tracey and Joanna,  
and friend of Sonia. Devoted Omi  
to Isaak, Lily, Gabrielle, Eliza, Lucy  
and Alexander.

With grateful thanks to the Karingal team  
for her care over the last 7½ years.

## LOCAL WATER EXPERTS PROVIDING TRUSTED SOLUTIONS

Your one-stop-shop for complete systems, in-house design, install and maintenance



We have everything for all your water & irrigation needs

- Pivots
- Solar Pumps
- Domestic Pumps
- Pipe Fittings
- Poly Pipe
- Filtration
- Pump Service & Maintenance



**LATROBE STORE**  
4 Speedway Drive  
03 6423 1255



**DARLING irrigation**  
making every drop count  
An ABBEY Business

[www.darlingirrigation.com.au](http://www.darlingirrigation.com.au)

PH: 6491 1107  
1/36 CLAUDE ROAD

**Give the  
team a call  
today!**

**PRIORITIES.  
ARE OUR HIGHEST  
JOB WELL DONE  
SERVICE & A  
HONEST, FRIENDLY**



## MOLE CREEK HOTEL

WHY NOT TAKE A LEISURELY DRIVE OVER THE SCENIC GOG RANGE AND VISIT THIS GRAND OLD HOTEL

- ❖ Real Country Style Meals – 7 Days a week
- ❖ Visit our world famous Tassie Tiger Bar – Family friendly with no gaming machines.
- ❖ Plenty of room for the kids to play!

Call Doug and Ramona now on Ph: 6363 1102

Email: [molecreekhotel@gmail.com](mailto:molecreekhotel@gmail.com) Web: [www.molecreekhotel.com.au](http://www.molecreekhotel.com.au)

- Fertiliser
- Dolomite
- Lime
- Broad Area Spraying
- And More

Sam Lee-Keys: 0487 565 930  
Email: [stspraying@gmail.com](mailto:stspraying@gmail.com)

Friendly Staff

No Weekend Surcharge

Fantastic Rates

Local & Instate

For tips & reviews  
search 'Lighthouse Removals'  
**YouTube**

### LIGHTHOUSE REMOVALS

Mobile: Gordon: 0420 505 395 Office: Nikki: [lighthouseremovals@gmail.com](mailto:lighthouseremovals@gmail.com)

# MRLC funding for weeds, first aid

Mount Roland Land Care (MRLC), like so many other not for profit groups, would achieve nothing without the commitment and hard work of many volunteers. But an active group, aiming to achieve lots in the community, needs more than volunteer hours, it also needs cash.

It's a hard fact. Fundraising is a key priority of the group.

In the last few months, MRLC has successfully applied for two grants to support its activities. \$8097 was granted to MRLC by the Foundation for Rural and Regional Renewal (FRRR) to provide training for group members, tools for our working bees and Personal Protection Equipment to help keep us safe.

The first element of this grant was successfully delivered at the Claude Road Hall on July 20, with accredited First Aid Training provided for Committee and members. The group holds many working bees annually, so having the ability to provide appropriate first aid is essential.

It's also essential that participants at working bees are provided with appropriate PPE, such as hi viz vests gloves, and eye protection. Attendance at a recent event was so strong that we couldn't provide a hi-viz vest to all participants, so the ability to purchase more through this grant is particularly welcome.

A second grant has also boosted the group's capacity to continue its decade long program to protect Mount Roland Regional Reserve from invasion by environmental weeds.

The 'Community Capacity' grant is delivered by Cradle Coast Natural Resource Management, and MRLC has successfully applied for the maximum grant amount – \$3000 – to support its weed control efforts around Mount Roland.

The funding will be used to strategically control the highest priority weeds threatening the Reserve by engaging weed control contractors to implement weed control where works are

not appropriate to volunteers – either because the weed site is too large, or because control requires the use of herbicides.

The engagement of contractors will be complemented by a series of three (at least) public weeding bees in or near to the Mount Roland Regional Reserve. These weeding bees are a great opportunity for the community to meaningfully contribute to the protection of the mountain we treasure.

A further grant through the 'Healthy Tasmania' program, funded by the Tasmanian Government continues to fund our tree planting program, which will resume in September this year and continue into 2025.

Mount Roland Land Care expresses its sincere thanks to these funding bodies – these grants complement our group's volunteer contributions, and enable us to continue working for the betterment of our local community, and environment.



---

## Business loans up to \$3m open for regional tourism

Applications are now open for loans of between \$100,000 and \$3 million to support projects that assist with the development of new or improved tourism products and experiences through the \$50 million Regional Tourism Development Loan Scheme.

Premier and Minister for Tourism and Hospitality Jeremy Rockliff said the Government was building on Tasmania's reputation as a world-leading tourism destination and highlighting Tasmania's unique experiences.

"We know there is so much innovation in the tourism industry, but current commercial interest rates can make it challenging for ideas to become a reality," he said. "This scheme will provide an opportunity for operators to realise new projects with the incentive of a lower interest rate than what is available in the commercial lending market.

Interest payable on the loans is concessional for three years and currently sits at a 3.85% variable rate, before converting to a commercial rate for the remaining term of up to two years.

Under the terms of the program, successful projects will also have a focus on year-round regional tourism, authentic Tasmanian experiences, environmental sustainability and inclusiveness and accessibility.

Loans need to be secured by freehold property up to a maximum Loan to Value Ratio of 80 per cent.

MR

# PERFECT

MORE THAN A BBQ

**Come along to the Mr. Perfect Kentish BBQ**

**Saturday 31st August**

**11 am - 12:30 pm**

**Health Park Sheffield \***

**FREE BBQs FOR MEN**

Community & Connection | Park BBQs across Australia | More than a BBQ

\*In case of bad weather please join us at the Blacksmith Cafe for a hot drink and a chat\*

BBQs are held on the last Saturday of each month

Contact Kentish House for info 0447 325 343

This is a COVID Safe Event. Please do not attend if you are feeling unwell or experiencing cold/flu-like symptoms



# Walters

CONTRACTING

**EARTHMOVING & QUARRYING**  
LANDSCAPING AND GRAVEL SUPPLIES

Nook Quarry - Gravel Pit Road, Nook  
Landscape Supplies Yard - 6192 Frankford Road, East Devonport  
Main Office - 11 East Goderich Street, Deloraine

- SUPPLY & DELIVERY OF GRAVEL, AGLIME & LANDSCAPE SUPPLIES.
- ROAD, SUBDIVISION & DRIVEWAY CONSTRUCTION
- GRADER, ROLLER, EXCAVATOR, MOBILE CRUSHING & BULLDOZER HIRE
- TRUCK, TRUCK & TRAILER, WATER CART, HEAVY HAULAGE
- CIVIL CONSTRUCTION, EARTHWORKS, EXCAVATION, DAM BUILDING



Main Office - (03) 6362 3782  
Sales, Pricing & Deliveries - 0400 333 275  
<https://www.walterscontracting.net>  
'Making The Grade'

## Bakes Sawmill Pty. Ltd.



ABN 78 092 865  
1369 Claude Road, Sheffield Tasmania 7306  
Telephone: (03) 6491 1699,  
Mob.: 0407 911 692 + Fax: 03 6491 1971  
E-mail: bakes101@aapt.net.au

**For ALL your TIMBER NEEDS !**  
DRY FRAMING, WEATHERBOARDS  
GREEN TIMBER CUT TO ORDER  
RAILS, PALINGS, GARDEN SLEEPERS  
WOOD CHIPS, GARDEN STAKES (pointed)  
OREGON BEAMS, STUDS & PLATES  
SAWDUST & MILLWOOD FIREWOOD  
**DELIVERY AVAILABLE**

## PADDYWORKS

Excavation and Earthmoving

20 tonne excavator - 7.5 tonne excavator  
with 5 buckets, auger and rock breaker  
2.5 tonne excavator - 10 yard tipper  
Tim Padman 0439369455 / 64911181

## KNIGHT EARTHMOVING TAS

### BOBCAT, EXCAVATOR & TRUCK HIRE

**3½ Tonne Excavator with rubber tracks  
and 300 or 450 diameter augers.**

*"Family owned business servicing the Kentish area for  
over 30 years, experience that will assure a job well done."*

Specialising in driveway preparations, slab preparations  
and footings, drains and all other earthmoving needs.

**Call MATTHEW now on 0418 320 593 or A/H 6491 2308**



Locals looking for Tradies look  
Here! Advertise your business in  
The Kentish Voice and get found.

## TV HELP!

Bad Reception?  
No Signal?

- ✓ Government Approved!
- ✓ No Travel Charge!
- ✓ Guaranteed Results!
- ✓ Pensioner Discounts!



TV Antennas  
Vast Satellite TV  
Equipment Setup  
TV Points

Fully Insured

**LIVE WIRE ANTENNAS**

ID 8224

## SKB PROPERTY MAINTENANCE

ABN 41 815 77 834

Kentish Local 30 yrs Experience

- General Maintenance
- Handy Man Jobs
- Fully Mobile
- Pressure Washing
- Rubbish Removal
- Weeding
- Gardening
- Mowing/Whipper Snipper

Phone: **0447 802 850**

# Increased costs, capital works lead to 7% rate rise

At a Special Meeting of Council on July 2, Kentish Council approved a 7.1% rate in the dollar general rate increase to enable it to continue to meet community service needs and provide a sustainable financial footing for the future.

The rate increase is necessary to cover general price rises for goods and services provided by Council, as well as the following specific items:

- \$320,000 reduced share of profits from Dulverton Waste Management Authority (equivalent to about a 5.8% increase in general rates).
- \$52,000 additional interest cost for the \$1 million Sheffield Arts Centre. Following the end of the State COVID-19 stimulus interest subsidy, this amount is equivalent to a 0.9% increase in general rates.

For the average residential ratepayer, this general rate increase translates to an extra \$2.94 per week.

Mayor Kate Haberle said: "In 2024, the Valuer General updated property assessed annual values, which we used to determine 2024-25 rates. Some property classes, especially Primary Production, saw an average value increase of 35%."

The financial year 2024/25 Budget delivers funding for the ongoing services provided by Council, and:

- responds to rising cost of waste management on behalf of the community
- funds the introduction of the new Food Organics Garden Organics (FOGO) kerbside service.

It also provides for \$1.1 million of stormwater upgrades, including for bridgeworks in Dowbiggin Street, Railton, subject to no increase in flood risk hazards downstream

The other big budget item is the construction of a roundabout at the intersection of Main Street and High Street in Sheffield, costing \$500,000, and currently underway.

# Preparing your fruit trees for Spring



One of the things that you can do at this time of year that often gets overlooked is to spray all your apple and pear trees, and your stone fruit (nectarines, apricots, peaches, cherries and plums) with Lime Sulfur, not just over the tree but around the tree, out to the drip line of the tree.

This last part is important because a lot of the fungal diseases

hibernate in the ground and in the crevices of the bark on the trees. You can only do this now, whilst the trees are dormant.

Avoid spraying on days when the nights drop to freezing. Once we get into Spring, and the buds start to swell on the branches, then we start to spray the Copper fungicide.

Spray once, and then don't spray again until all the petals on the flowers have dropped and you are left with small fruits attached to the stem. At this stage you need to spray approximately once every four weeks or every two weeks if you have an extended wet period.

Pruning: Apples, pears and plums can all be pruned at this time of year. All the other stone fruits should be pruned four weeks after harvesting in summer. This allows the tree to heal faster and put on summer and autumn growth ready for fruiting in Spring.

This is particularly good for peaches and nectarines. If your trees are still young, and not fruiting yet, you can still prune mid-late summer.

Happy Gardening!

- Robert Gower



**Railton Hotel** *WINTER HOURS*

**Bar & Bottle Shop** Monday - Saturday from 12 noon  
Sunday from 11.00 am

**Restaurant** Sunday 11.30 to 2pm  
Wednesday to Saturday 5.30 to 7.30pm

**Specials** **Wednesday Night Steak Night \$22**  
**Thursday Nights Schnitzel Night \$17**

3 Foster St Railton  
0419 750 837

RV Friendly

All Meals Available Take Away

# Hidden patterns of landscape on show

North West Coast artist Helena Ambrosia will exhibit her interpretations of the Mt Roland landscape at the Sheffield Arts Centre in September.

Kentish Arts Commerce and Tourism invited Helena to Sheffield as an opportunity to get to know Mt Roland and to build a relationship with the rugged and beautiful landscape surrounding the mountain.

She looks forward to sharing her interpretation of the mountain and her discoveries of the lines, colours and textures unique to the area. Also on show will be special places on the North West



Coast from the Dial Range, Sisters Beach and Turners Beach.

Helena's practice is to make a relationship with wild places starting from the observation of the small elements, soil, rocks, and plants to discover the hidden patterns and flows within the landscape. Once she has established her perception of colours, contours, lines and textures of an

area, she progresses into larger pieces, reflective of the grander landscape.

The exhibition opening will be held on Saturday, August 31, at 5pm at the Sheffield Arts Centre. To attend, please RSVP to 0427 475 113 or email [info@muralfest.com.au](mailto:info@muralfest.com.au).

Helena will be conducting a workshop - *Connecting with your Inner Landscape* - at the Sheffield Arts Centre on Saturday, September 7, from 10am to 4pm.

Information and bookings, visit [www.uniqueambrosia.com.au](http://www.uniqueambrosia.com.au)

## Annual Wilmot Community Hall Trivia Night Fundraiser



**Saturday August 24<sup>th</sup>**

**Doors open at 6.30pm for 7.00pm**

**Raffle, Games, and Prizes .**

**Fun and laughter**

**Coffee, Tea, Milo**

**BYO drinks and nibbles for your table**

**Tables of 8 - \$10.00 per person**

**No Team? No problem!**

**We will find you a place!**

**Book your table now with**

**Annette 0409 338 942**

**Bookings are essential as space  
limited**

**I DID  
BUT I DON'T KNOW**  
Need a family law expert?

SW/HV-0024-JL

Simmons Wolfhagen family law team understand separation and divorce can be an emotionally draining time for all parties involved.

Whether dividing assets, parenting or pre-nuptials, our focus is always to assist you achieve timely, practical and positive resolutions.

**Need expert legal advice?**  
**Contact Simmons Wolfhagen first.**

**simmons  
WOLFHAGEN  
LAWYERS** 

Launceston | Smithton | Hobart | Kingston

03 6338 2390  
[info@simwolf.com.au](mailto:info@simwolf.com.au)  
[simwolf.com.au/family-law](http://simwolf.com.au/family-law)

- o Family Law
- o Personal Injury
- o Conveyancing
- o Wills & Estate Planning
- o Conveyancing
- o Employment Law



# Funerals on beaches or in the backyard

The Funeral Collective based in Devonport was established to provide families with more options to give their loved ones a farewell that has personal meaning, utilising the venues and places that mean the most to them.

This can be a farewell on the beach, in the backyard, the paddock or their favourite club or venue.

The director of The Funeral Collective, Tracey Bruce, has a passion to help guide grieving families to organise the most memorable farewell for their loved one.

Tracey has also written a book called *Dying Done Differently* which is a blueprint to your funeral plans and gives you an insight into the inspiration behind the idea of The Funeral Collective and how the funeral industry is changing around the perspective of dying.

Tracey is supported by staff who also have extensive experience in the funeral industry.

Caleb Williams has spent numerous years in the industry as a funeral director and manager of a local funeral home.

Caleb has a great passion for the funeral industry and assisting the families of the North West coast at their time of grieving.

Margaret Fabian, or better known as Margy, is our admin extraordinaire who will normally be the first person you speak to when you call our office.

Margy has extensive experience in areas of the funeral industry and the best person to speak if you are after memorialisation.

Josh Southon has experience with another local funeral business and has joined the team at The Funeral Collective to assist the families of the coast to create a memorable farewell for their

loved ones. Josh enjoys numerous other interests outside of work, including time with his adored children.

The Funeral Collective offers all the funeral options to families whether it be cremation or burial services, prepaid or prearranged funeral arrangements, all at a competitive transparent price.

You will find Tracey and her team at 92 Formby Road, Devonport or call 6451 5889. The Funeral Collective covers the entire North West coast.



*A caring ear in difficult times: (from left) Josh Southon, Margy Fabian, Tracey Bruce and Caleb Williams.*

## TRADES AND SERVICES

### SHARPENING in SHEFFIELD

Knives, garden tools,  
wood working, scissors,  
and most others

Gerry Hopkins  
0418 128 360

Please call, drop off by  
arrangement

### Mobile Signal Issues?

We can boost your mobile signal so that you can make calls. Inside, outside or in your vehicle.



### Security Cameras

We can supply and install Security Cameras where you need them to keep an eye on the things that matter to you most.



### Wi-Fi



Need to get Wi-Fi to the other side of the house, to another building or to the other side of the farm? We can help with that!

### StarLink



Struggling to get a good internet connection? Talk to us and we can show you how to get the best internet connection available.



Phone: 0499 642 900

Email: [nic@raptordc.com](mailto:nic@raptordc.com)

Web: [www.raptorcomms.com.au](http://www.raptorcomms.com.au)

### P & D BELLCHAMBERS

#### Furniture & Joinery

Specialising in Kitchens, Bathrooms & Wardrobes

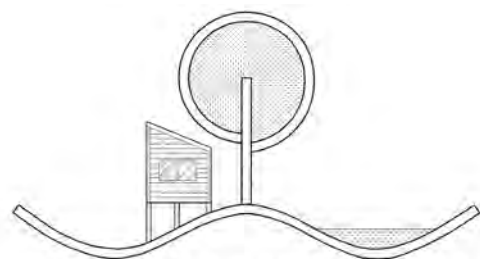
(03) 6496 1081

Mobile: 0419 514 172

[pdbellchambers@hotmail.com](mailto:pdbellchambers@hotmail.com)



34 Foster Street  
PO Box 41  
RAILTON. TAS. 7305



### WOOD DRAFTING & DESIGN SERVICES

For HOUSE PLANS, EXTENSIONS & SHEDS  
call Paul Wood on 0408583646  
Room 5/55 Best St Devonport

# Finding Field's stockyards also

When Field Bros' 15-year cattle lease of the Kentish Plains expired in 1858, surveyor **James Dooley** was given the task of dividing these plains into saleable farm blocks for public purchase. In early 1859, **Thomas Johnson Sr** from Sherwood Hall near Latrobe, one of the largest landholders at Tarleton & Ballahoo, bought several blocks around Sheffield, including several blocks of open plains along both sides of the Old Paradise Rd out as far as the junction with Brays Rd.

The middle block on the eastern side of Old Paradise Road included the site of Field's cattlemen's hut and stockyards. In fact, Old Paradise Rd was formed by following the muddy cattle tracks that didn't end at their stockyards but continued downhill onto the lush open flats of the Dasher River, a favourite feeding ground for Field's cattle known to the stockmen as Duck Marsh. Despite steep hills out along Old Paradise Rd, within the next couple of years early settlers had purchased all the blocks between Sheffield and Jeffries Rd, some with magnificent views of Mt Roland.

South of Jeffries Rd, all crown land granted to Mersey & Deloraine Tramway Co, had passed into the hands of Foster's Estate and didn't come up for sale until April 1887. This was the same year that a passable road from Sheffield was continued through the Dasher River up into the top of Paradise and called Paradise Rd. For 27 years, early settlers endured its notoriously steep hills until 1914, when an alternative connector road was constructed from Paradise westward over the Dasher River to join the road coming from Claude Road to Sheffield. For Paradise people, this new access road made it shorter and much easier to reach Sheffield. This new road was proclaimed 'Paradise Rd', so the road we are currently discussing has, for the last 110 years, been downgraded to Old Paradise Rd.

In this article, we will highlight some of the pioneer settlers along Old Paradise Rd, fully aware that since then their original properties have been subdivided many times.

## 134 Old Paradise Rd Selika 102a Johnson, Langford

When Surveyor Dooley surveyed the 102-acre middle block at 134 Old Paradise Rd for Thomas Johnson Sr in Dec 1858, he marked the position of Field's hut and stockyards about 30 yds back from the roadway and added the following note: 'Good open plain, well-watered with running creek. Slab hut 10x13ft and substantially built 4-railed stockyard with 3 separate compartments.' Thomas Johnson Sr never came to live on the Kentish Plains, but his three eldest sons, **Thomas Johnson Jr** (25), **J G (Jack) Johnson** (21) and **Lewis Johnson** (19), came to manage his various properties, and he regularly visited them.

When Thomas Johnson Sr died in 1867, all his Kentish properties passed to these three sons. His oldest son, Thomas Jr & wife, Elizabeth Ann Johnson, took over the three blocks on the western side of Old Paradise Road but sold those on the eastern side. They had six children before they came to Sheffield and another five after they arrived. Thomas Johnson Jr was elected to the first Kentish Road Trust between 1866–1871. The Johnsons loved cricket, and when the locals first came together to play cricket in Harry Dawson's paddock, it was Thomas Jr who taught them to bowl overarm instead of underarm. The locals loved it, and the game became popular throughout the district. The 1879 Kentish cricket team had three Johnsons in it, and Thomas Jr was one of two Kentish players chosen in the NW Coast team to play the visiting English XI at Latrobe in January 1888.

Soon after their arrival on the Kentish Plains, Thomas Jr and his brothers developed 'gold fever' and spent huge amounts of time prospecting, digging claims and buying shares that, in the end, didn't amount to anything. Compared to their wealthy father, the three brothers ended up relatively poor. Thomas Jr had to sell his farm and finished life living in a rented house in Sheffield. 134 Old Paradise Rd was purchased by **Wm Davis** from South Africa who named it **Selika**. In 1914, unable to regain his health after being dragged around a paddock by a frightened horse, Davis sold out and returned to South Africa. Among Selika's various owners were **Law(rence) & Elizabeth Bray** from Westbury. Law Bray (62) died at his residence, Selika, in Nov 1918 while his three boys were away in WW1. **Jack Branagan**, a close friend of **Gustav Weindorfer**, bought Selika in the spring of 1947. Branagan became a prominent farmer, local councillor, original board member of the Roland Boys' Home and, after moving to George Town, author of several books on Tasmania. Sometime after **John & Margaret Langford** purchased the property, their house was destroyed by fire. John painstakingly built the present unique stone house, which has large bay-shaped lattice windows and a tiled roof.

## 213 Old Paradise Rd Green Hills 100a Dawson, Wasley

Oldest son of Launceston Town Surveyor Wm Dawson, **J H (Harry) Dawson**, married **Ann Thompson** of Torquay about 1855 and, in May 1859, bought the last remaining block along the Old Paradise Rd. It was in Dawson's paddock that local cricket was first played. In Jan 1869, Dawson led the first overnight excursion party up Mt Roland to witness the sunrise. Harry Dawson served on the Kentish Road Trust between 1869–1872, becoming chairman 1870/1871. He is especially remembered for erecting the first log water-trough on the Stoodley hill. He was also chairman of the Kentish School Board 1870–1873. In 1874 Harry & Ann Dawson, with their family, sold out and followed Harry's parents to Invercargill, NZ, where his father had become town surveyor. Other owners/lessees of 213 Old Paradise Rd were **George Morse** (prior to settling in Paradise), **Geo Eagling**, **Reg Hope** and family, **Tom Wall** and **Colin & Linda Wasley**.

## 214 Old Paradise Rd

### The Spinney Davis, Steane, Edbrooke, Allen

This property was first purchased by **John Bell Davis**, a London-born butcher who died in 1897 aged 79 without offspring. Other owners/lessees included **William Overton**, **James Morse**, **James Kirkcaldy**, **Reuben Austin**, **David Eagling**, **Herbert Austin**, **Hazel Lord** and **John Walsh**. In 1953, when **Sam Steane** retired from being Tasmanian Conservator of Forests, he and his wife **Cecily** purchased this property and lived there for the next 12 years, contributing to the social life of Sheffield. In his first year in Tasmania, Steane introduced aerial photography of our state's forests and produced the first aerial mosaics on a scale of two inches to one mile in Australia. After the Steanes left, in 1965 ex-HEC engineer **Robert (Bob) & Connie Edbrooke** pulled down the old house and built a new one Connie called 'The Spinney', meaning Little Wood. Both had a lot to do with establishing the Senior Citizens' Club in Sheffield. In 1978, 7AD radio announcer **Tas Allen** with wife **Sheena** purchased the property. Close by The Spinney, the road branching off to the right is Brays Rd, originally Lords Rd. On Lord's 160-acre property, two historic houses were built that now have separate addresses.

# ng Old Paradise Road

By Alan.F.Dyer

## 110 Brays Rd Roland View Edmund Lord & 2nd son Charles Lord

In 1860 **Edmund Lord** (49) & third wife **Mary McMorgan** (28) were among the first 20 people to settle in Kentish. Edmund built their home Roland View on a hilltop where it was claimed **Surveyor N L Kentish** first viewed the plains that afterwards bore his name. Edmund & Mary had two sons, **George Edmund Lord** (b1859) and **Charles Marquis Lord** (b1861), and three daughters.

In Dec 1861 Edmund Lord was one of three original pioneers who purchased a township block on the corner of Main & Henry St to be set aside for a future church. Lord was a member of the Kentish Road Trust in 1866 and the local school board in 1870. When the two early Christian Brethren evangelists **Moyses and Brown** arrived in the Kentish district in August 1874, they were given lodgings in Lord's home. Edmund died in April 1877 aged 70, leaving his two boys, **George** (17) and **Charles** (15), to carry on.

---

## 'From the lush fields of Duck Marsh, they collected watercress, rosehips and a rich variety of native plants.'

---

After both brothers married, George chose to live and farm on the eastern half of Lord's property (see below), while Charles & Mary (Lockett) Lord continued to reside for the rest of their lives at Roland View. Charles had two sons, **Harry and Milton Lord** (Sheffield), and three daughters.

Charles was a member of the Kentish Council for 30 years and served one term as warden. He was a staunch member of the Sheffield Methodist Church and a local preacher for 55 years, being the first man to conduct a divine service at Wilmot. Charles died in April 1945 aged 83.

## 99 Brays Rd Fernhurst / The Gables Lord

**George Edmund Lord** (26) married **Lucy Lane** (22), daughter of **George Lane**, Sheffield's first saddler, in July 1885.

George built their first split-timber home, **Fernhurst**, in the southeastern corner of the block overlooking the Dasher Valley. Surviving children born at Fernhurst were: b1887 Edna (Mrs James Harvey), b1890 Eric, b1893 Chas Macmorgan, b1895 Bessie (Mrs Ken Dyer) and b1896 Edmund Harvey.

Having outgrown Fernhurst, about 1900 George & Lucy Lord built **The Gables** down the hill close to the entrance road. Final children born at The Gables were b1900 Winnifred (Mrs Les Dyer) and b1904 Kenneth Lord. George Lord was the Kentish correspondent for Launceston's *Daily Telegraph* for 25 years.

About 1915 George & Lucy Lord, with three of their married children, began attending the Kentishbury Gospel Hall and later the Sheffield Gospel Hall. Several extensions were made to The Gables, including a room for **Ruth Harvey** to run a private school.

When George Lord died in 1939, **Arty & Amy Bray** lived at The Gables followed by son **Allan & wife Daisy Bray**. From 1978, **Iris Southwell** bred horses on this property, then **Alan Gent** & Iris ran their 300-goat dairy farm on it. Eventually The Gables became derelict, but today a magnificent modern homestead adorns this historic property.

## 337 Old Paradise Rd Duck Marsh 100a Morris, Overton, von Steiglitz

About 1866 **John & Harriett Morris** selected the green marshland beside the Dasher River that had been a favourite place for Field's stockmen. It could carry more head of cattle per acre than any other farm in Kentish. John & Harriett had two sons, **Bruce and John Jr Morris**, and a daughter. Between 1880 and 1920, a bridge across the Dasher River at Duck Marsh allowed some locals to become pioneer settlers of Upper Beulah. It was also the most popular place for district picnics and local cricket matches. For over forty years, the Baptist churches held their Boxing Day picnics there. In 1894 John & Harriett purchased Highfield Farm at High St, Sheffield, while John Jr took over Duck Marsh. John Morris died 18 March 1911 (72) and Harriett Morris d 24 Oct 1907 (65).

About 1899 **Wm Overton**, eldest son of the pioneers **Henry & Sophia Overton** of Jeffries Rd, built a new family home 100 yards down Duck Marsh Rd for the purpose of establishing his Dr Overton's Herbal Medicine Co, which flourished for most of the first decade of the 19th century. From the lush fields of Duck Marsh, they collected watercress, rosehips and a rich variety of native plants to which they added imported hops to create their curative concoctions. They were regularly advertised in newspapers and sold extensively by many chemists and general stores along the coast. **Owen von Stieglitz** married **Florence Bawer**, both of Beulah, in Feb 1921. After Overton, they purchased Duck Marsh Farm and built their new house, **Wahroonga**, along Old Paradise Rd. Children: Bill, Gwyneth, Lewis, Kevin and Desmond. In Oct 1978 when Tandara Home opened, Owen von Stieglitz was amongst the very first residents to arrive. Later, creative **Etty McGraaf** purchased the property, modernised the house and put in a Japanese Zen garden.

## 409 Old Paradise Rd Wattle Grove 56a Reuben Austin

In April 1862 young **Reuben & Margaret Austin** settled on the 58-acre corner block of Old Paradise Rd and Jeffries Rd that overlooked the whole of Duck Marsh. Prior to this, the newlywed couple spent nearly two years clearing Reuben's uncle **John Dyer's** block at Kentishbury. Prior to leaving England, Reuben had an excellent education, and during his lifetime was a great help to his less-educated Kentish neighbours.

About 1965 Reuben Austin, **Henry Overton, Wm Bilham and John Dawson** decided to explore the southern side of the Dasher River. They climbed to the top of a very steep hill and, digging their heels into the ground, discovered it was rich, fertile soil. Jumping up on a large log and looking up at the glistening mountain, Reuben Austin exclaimed, 'This is paradise!' The name stuck and first appeared in print in the *Examiner* two years later in March 1867. But most of this Paradise land had been granted to Foster's Estate and didn't come on the market until 20 years later.

After the Christian Brethren evangelists arrived, Reuben Austin was converted on 16 Dec 1874 and became an early leader at the new Kentishbury Gospel Hall. Reuben developed an intense interest in treating the sick with herbal and medical concoctions, pulling teeth and sewing up cuts. Austin became the financial backer behind Wm Overton forming **Dr Overton's Herbal Medical Co** at Duck Marsh. In 1903, Reuben Austin who lost three wives and his two eldest sons, sold his farm to his oldest surviving son, John Austin. Reuben died in April 1922 aged 81.

**YOUR LOCAL**  
**SHEFFIELD + SURROUNDS**  
**REAL ESTATE**  
**EXPERTS**

*Corinne Nicholson*     *Gerald Davies*  
 0488 611 968             0418 126 089

**Roberts**     **Roberts Real Estate Sheffield**  
 real estate     48 Main Street, Sheffield, TAS, 7306  
 T (03) 6491 1499




**LAWN & GARDEN**  
**MAINTENANCE**  
**SLASHING / WEED CONTROL**  
**RUBBISH REMOVAL & MORE**  
**FREE NO OBLIGATION QUOTE**

**13 26 13**  
 www.viphomeservices.com.au

**Dentist**

- Dental Implants from \$3,900
- Crowns and Bridges
- Cosmetic Dentistry
- Night Guards
- Anti-wrinkle Treatment
- Medibank Preferred Provider
- HCF Preferred Provider



**Ph 6426 1188**  
 Open Monday to Friday – 9:00am – 5:00pm  
 98 Gilbert Street, Latrobe

**TASMANIAN**  
**ORGANIC**  
**COFFEE CO.**



Thank you for supporting  
 the only certified organic  
 coffee roaster in Tasmania!  
 Contact Cyriel the bean  
 carer: 0448 644 696  
 www.tasorganiccoffee.com

We are your local  
**Kentish electricians.**  
 RESIDENTIAL, COMMERCIAL & INDUSTRIAL

**IDD Electrical** PTY LTD  
 Innovative Design, Drafting & Electrical

ECL: 1452424     ABN: 68203257755

**Call Todd**  
 iddelectrical.com.au  
**0422 686 592**



**LIBERAL**

**SENATOR**  
**WENDY ASKEW**  
 LIBERAL SENATOR FOR **TASMANIA**

46 Cameron Street,  
 Launceston TAS7250

63318501

senator.askew@aph.gov.au

SenatorAskew



Authorised by Senator W. Askew, Liberal Party of Australia,  
 46 Cameron Street, Launceston TAS 7250.

ABN: 35 601 663 441  
 C/L 1386226



**Briggs Plumbing**

**Tas**

2 Douglas Street / PO Box 105E, East Devonport TAS 7310  
**Phone:** 03 6427 8781 • **Fax:** 03 6427 8771 • **Mobile:** 0418 140 104  
**Email:** admin@briggsplumbing.net.au

# Basil moves paddocks to find more friends



Basil the Bull, the iconic topiary bull in the paddock on the outskirts of Railton for many years, is going to have a new home.

He has stood alone, peering over the fence for many years and has been photographed by countless tourists.

Lately, he has been looking very sad and lonely.

The Kentish U3A Topiary Group, which meets in the Topiary Paddock from 9.30am-12 each Wednesday, has asked permission of its owners to move him to the Topiary Paddock, where he'll have some new plants to get him re-established, and have lots of other topiary animals to keep him company.

Contact Leoni Read on 0429 705 062 if you would like to join the group.



## Scam Awareness and Online Safety Monday, August 26, 11.30am-1.30pm Sheffield Uniting Church, Main Street

DAY	COURSE DETAILS
<b>MONDAY</b>	
Move with Ease	10.00-11.00am Sheffield Uniting Church Contact Nita: 0437 795 374
Pétanque/Molky	11.15am-12.45pm Health Centre Park. Contact Nita: 0437-795-374
Social Mah-Jong Group 1	1.00pm (1 <sup>st</sup> and 3 <sup>rd</sup> Mondays.) Blacksmith Café Contact Ali: 0410 742 012
Social Mah-Jong Group 2	1.00pm (2 <sup>nd</sup> and 4 <sup>th</sup> Mondays.) Blacksmith Café Contact Ali:0410 742 012
Accordion Group	3.30-4.30pm Uniting Church Hall Contact Mark 0428 515 445
<b>TUESDAY</b>	
Wellness & Support	9.15-10.30am (Weigh in) Sheffield Uniting Church, then at Blacksmith Café for Coffee & support Contact Lynne: 0407 240 450
Pickle Ball	9.00-11am Railton Recreation Community Centre Crocker St. Railton Kate 0407 510 857
Table Tennis	3.00-6.00pm. Sheffield Town Hall Contact Don: 0458 343 059
Basic Guitar	1.00-3.00pm Sheffield Uniting Church Contact Mark 0428 515 445
<b>WEDNESDAY</b>	
Cycling the flat paths	(1 <sup>st</sup> Wed.) Contact Margaret: 0421 648 123
Walking for leisure	(3 <sup>rd</sup> Wed.) Contact Margaret: 0421 648 123
Nature Walks	(2 <sup>nd</sup> Wed.) Contact Greg: 0438 589 173
Topiary	10.00-12.00pm Topiary Paddock Crockers St. Railton Contact Leoni: 0429 705 062
Informal French	12.30-1.30pm at Gear Café Railton Contact Leoni: 0429 705 062
Balance and Bones	9.00-10.00am & 10.00-11.00am Health Centre Contact Jennifer: 0400 376 937
Cryptic Crosswords	1.00pm (2 <sup>nd</sup> & 4 <sup>th</sup> Wed) Blacksmith Café. Contact Margaret: 6491 1175
<b>THURSDAY</b>	
Challenging Walk	9.00 (1 <sup>st</sup> Thur.) Meet at Don Store carpark. Contact Lindsay: 0434 984 570
Ukulele	9.30-12.00pm Sheffield Uniting Church Contact Mark 0428 515 445
Line Dancing	9.00-10.00am Health Centre Contact: Narelle 0407660272
Zumba	2.00-3.00pm. Sheffield Uniting Church Contact Colette 0439 426 665
<b>FRIDAY</b>	
Kayaking	Must have own Kayak & Safety Equipment. Safety Course essential. Contact: Jennifer 0400 376 937
Balance & Bones	9.00-10.00am Health Centre Contact Jennifer: 0400 376 937
The Joy of Maths	10.00-11.00am Uniting Church Hall Contact John: 0457262040
Cribbage	2.00-4.00pm Sheffield Uniting Church Contact Mark: 0428 515 445
<b>SATURDAY</b>	
Botanical drawing	1.00-3:30pm Working Art Space Contact Colette 0439 426 665

## Market Moves with Corinne Nicholson Roberts Real Estate



Our Kentish real estate market has demonstrated remarkable resilience and growth this year, outperforming the North West average. While house sales in Tasmania increased by 1.1%, of all the suburbs in Kentish, Railton and Sheffield stand out for their impressive 35.3% median house growth.

In the June quarter, Kentish saw house sales ranging from \$250,000 to \$1,035,000, with an average median house price of \$491,000 - a 38.1% increase on last year, averaging 168 days to sell. Land sales ranged from \$185,000 to \$330,000 - a 54.1% change from 2023 averaging 390 days to sell. Popular sale price ranges were \$500,000-\$599,000 for houses and \$200,000-\$249,000 for land.

The month of May sales were distributed across various locations, including Acacia Hills, Lower Barrington, Lower Beulah, Railton, Roland, Sheffield and South Spreyton.

The buyer profile for Kentish shows 50% local buyers, 10% intrastate, and 40% interstate, mostly second home buyers.

The rental market remains strong with a 2% vacancy rate. Average weekly rents are \$340 for units and \$400 for three-bedroom houses.

Kentish continues to offer promising growth and opportunities, cementing its appeal as a vibrant destination.

## Kentish House expands services through funding

Kentish House works closely with community members and local service providers, with all programs and services tailored to meet the needs of the Kentish Community and funded solely by grants and donations. Some of the services offered include: playgroup, links and referrals to other services, parenting programs and workshops, emergency relief and youth activities.

TasNetworks recently provided funding to support a number of Kentish House's ongoing programs, and a new addition for the Access 2 Health Services Project.

Chris Warr (Leader Major Projects Engagement, TasNetworks) says, "TasNetworks recognises the critical role that community organisations like Kentish House play in creating a positive difference in the lives of Tasmanians. Supporting these initiatives was an easy decision with a key community facility enhanced, making it more accessible for everyone to enjoy and providing long-lasting benefits."

"By providing this support we aim to help build local resilience, encourage strong social connections and prioritise the health and wellbeing of rural communities."

The TasNetworks funding has allowed Kentish House to:

- upgrade the toys at Playgroup, with a focus on increasing messy-based play. Playgroup is open to those with a child/ren in their care aged 0-5 years of age. It runs from 9am-11am every Tuesday (during school term) at Kentish House. No need to RSVP – just turn up ready to have fun!
- grow the edible garden used to assist the Cooking Group in reducing ingredient costs, providing food for those in need, and teaching Playgroup children where food comes from and to assist in building a garden shed that will be used to house outdoor toys. Cooking Group is held every week on Wednesdays (during school term) with a focus on creating healthy food meals. Currently at capacity, please contact Cassandra on 0447 325 343 to register your interest.
- begin a 6-month trial in *The Kentish Voice* to place a Kentish Health Services Listing, in collaboration with the Access 2 Health Services Regional Project.

Recent consultation by the A2HS Regional Project with both community members and service organisations shows that our existing health services could be better utilised and patients better serviced with increased health promotion and literacy.

The monthly Kentish Health Services Listing will be trialled from August 2024 to January 2025 in *The Kentish Voice* and aims to cover Kentish-based health services/sessions/groups. Please contact Ruby on 0497 780 216 if there is a listing missing from the August edition that you think may be relevant.

The Hub has generously donated \$10,000 to Kentish House to help cover the ongoing costs of our programs, as well as to purchase a suitable shed (that the Kentish Mens' Shed has offered to install for free!) and appropriate furniture to create a welcoming and sensory-friendly space.

We deeply appreciate the ongoing support from The Hub and the Kentish Men's Shed. It is an honour to have such generous and dedicated organisations in our local community, and we are extremely fortunate to have them.

If there is a program, you believe would be beneficial to the community or an item you feel would make Kentish House more comfortable, please contact Cassandra on 0447 325 343.



**NORTH WEST FILM SOCIETY** Aug / Sept / Oct 2024

North West Film Society screens at  
**Reading Cinemas Best St Devonport**

Bookings essential for all movies via **Humanitix**

Preview all films at: [www.nwfs.org.au/upcoming-films](http://www.nwfs.org.au/upcoming-films)



**14<sup>th</sup> August @ 7pm**  
**The Three Musketeers: D'Artagnan**  
M | 121 mins | 2023 | France | Drama, Adventure  
After arriving in Paris D'Artagnan is drawn into the heart of a real war where the future of France is at stake. He aligns himself with Athos, Porthos and Aramis, three musketeers of the King.



**11<sup>th</sup> September @ 7pm**  
**Perfect Days**  
M | 124 mins | 2023 | Japan | Drama  
An Oscar-nominated Japanese drama that gently excavates the life of a cleaner, and the shadows that lurk inside.



**16<sup>th</sup> October @ 7pm**  
**The Taste of Things**  
M | 135 mins | 2023 | France | Drama, History, Romance  
An adaptation of Marcel Rouff's classic 1924 novel. Eugénie, a renowned cook and Dodin, a brilliant epicure, form a culinary partnership that extends beyond the kitchen.

Annual or Part Memberships available  
For more details visit the NWFS website - [www.nwfs.org.au](http://www.nwfs.org.au) or Phone – 0431 484 727  
Our membership recruitment desk operates between 6:30 pm and 7:00 pm at every screening. Find us on Facebook - [nwfilmsociety](https://www.facebook.com/nwfilmsociety)

## FOR SALE

**WHEAT 20KG BAGS \$14 0417**  
141399 or  
0400 263 340

### MICK DAVIES DOMESTIC WATER SUPPLIES

The Davies family have been providing this service to the Kentish area for over forty years.  
Call 0417 581 593 or 6491 1911 for prompt reliable delivery.  
Anywhere anytime.

### HARDWOOD KINDLING

\$8 per bag approx. 5 KG Local Delivery  
Phone 0409 218 364

### FIREWOOD DELIVERED

\$450 per Ute load  
Sheffield and Surrounds  
Leigh 0429 926 723

## WORK WANTED

**QUALIFIED EXPERIENCED HORTICULTURIST** available for gardening in the Kentish Shire.

Services include:

weeding, pruning, planting.

Phone: Michael on 0458 023 525 or email:michael.copas@bigpond.com

### ENABLED TECH

“For all your IT problems”  
Call Josh 0408 387 541

## CLASSIFIEDS

### WORK WANTED

#### DISCOUNT DOMESTIC WATER

Septic Tank Cleaning  
Portable Toilet Hire Skip Bin Hire  
Agricultural Contracting  
Slashing & Bailing  
Cultivation & Planting  
Rock Picking & Raking Firewood  
0419 539 537 or 6491 1227

#### EXCAVATOR HIRE

##### 20 TONNE MACHINE

Various buckets & log grab.  
Dam Cleanouts, House Sites, Clearing  
Reasonable Rates Railton & Surrounds  
Phone: Rod 0448 338 992

#### 8 TON EXCAVATOR/TIP TRUCK 11,000L WATERCART

Specialising in  
- Driveways & Cow Lanes  
- House Excavations - Irrigation Mains -  
Post Driving & Fencing - Gravel Supplies  
Call Tony on 0418 911 691

#### PICTURE FRAMING

It's time to frame it! Artworks, posters, photos, jigsaws & more.  
Call Greg today to discuss all your framing needs.  
Ph 0414 457 816.

#### TREE REMOVAL

Small & large trees.  
Industrial Wood Slitter for hire.  
20 tonne excavator for hire  
0428 912 166

## WANTED KNOWN

### CANINE HEALTH & REHABILITATION

In-home Myofunctional and Rehabilitation services for your dog.  
Specialising in:

\*Helping your ageing dog stay active & happy. \*Helping your dog recover from orthopaedic or spinal surgery. \*Helping dogs with muscle injuries.

www.caninehealthandrehabilitation  
info@caninehealthandrehabilitation.com

### DOG TRAINING MINI WORKSHOPS

Nosework, Tracking, Tricks & Obedience

www.notonlydogs.com  
Phone Emma 0408 520 654

## WANTED TO BUY

### ANTIQUES, COLLECTABLES, ANYTHING OLD & INTERESTING

Father and Son paying cash for antiques, collectables, anything old and interesting. Shed and House cleanouts.

Please call Stephen and Simeon  
0448 069 030

### SLOW COMBUSTION WOOD

**HEATER**, must be in good condition.  
Ph: 0412 069 238

**Send classified or display ads to:**  
**advertising@thekentishvoice.com.au**  
**or The Advertising Manager,**  
**12 Victoria St Sheffield 7306**  
**Classifieds \$2.50 per line**  
**(min 3 lines)**

## POLICE REPORT

OR 747939 – Destroy property/theft – Roland Court, Sheffield. On 01/07/2024 at around midday – a group of youths attended an address in Roland Court, Sheffield. They engaged in an argument with the resident. The youths smashed a window at the address and stole a package just dropped off by Australia Post. A youth has since been charged in relation to this matter.

OR 747652 – Stealing – Railton Motor and Tyre Service. On 01/07/2024, male persons has pumped 6.62L of fuel into his vehicle and left without paying.

OR 747958 – Destroy property – Lovetts Flat Road, Sassafras. Sometime in June 2024, unknown persons have used machinery to rip up 800 metres of new road, causing \$30,000 worth of damage.

OR 748145 – Stealing – Bridle Track Road, Kimberly. Walters Contracting are currently undertaking works on Bridle Track Road, Kimberly. Around 05/07/2024,

Emergency 000  
Sheffield Station 6478 6012

unknown persons have stolen 400 litres of diesel from machinery at the work site.

OR 748914 – Destroy property – High Street, Sheffield. Between 10/07/2024 and 11/07/2024, unknown persons have smashed windows by throwing rocks at the Sheffield Community Centre.

OR 749557 – Stealing – Sheffield IGA. Between 15/07/2024 and 21/07/2024, persons has entered the store on three separate occasions and have stolen a Sara-Lee cheesecake on each occasion. Person has been identified by police.

OR 749836 – Destroy Property – Brown Hill Road, Sheffield. Overnight, between 26/07/2024 and 27/07/2024, unknown person has entered onto a property at Brown Hill Road, Sheffield. While on the property, unknown person has located two window frames, where they have smashed multiple panes of glass.

Non urgent 131 444  
Latrobe Station 6478 4099

# Beef a highlight in Rural Bank's mid-year report

Commodity prices, production and exports have broadly lifted in the first half of the year, with beef the standout performer in Rural Bank's Australian agriculture mid-year outlook 2024. With an overall outlook favourable for the second half of the year, despite some variability across sectors, some cost-of-living relief is also expected to reach beyond the farm gate.

Rural Bank Head of Agribusiness Development Andrew Smith said farmers experienced varied conditions in the first half of the year, but among the many positives in the performance of the six industries analysed – cattle, cropping, dairy, horticulture, sheep and wool – and for Australian agriculture broadly, beef was a highlight.

"Australian beef exports to the US for the year to date were up 85 per cent on last year," Mr Smith said.

"Elevated export demand from the US – which has seen its lowest herd since 1951 – and key Asian markets is providing stability in beef prices and opportunities for continued export growth moving forward."

Some relief from cost-of-living pressures is expected for consumers, with the report projecting increased fruit and vegetable volumes.

"Some easing in produce pricing for consumers is expected in the coming half, though prices will stay above longer-term averages," Mr Smith said.

Global freight rates remain elevated and are forecast to persist due to tight vessel supply and strong global demand, but the report shows a low Australian dollar has supported export markets and expanded trade access into target markets.

"Exports have been very promising, with India's recent removal of tariffs on Australian chickpea imports until March 2025."

While dry weather persisted across Western and South Australia, with challenging winter crop planting conditions and pasture growth also impacted, the east coast reported much more favourable soil moisture conditions.

"Australian winter crop production should increase 9% to 51.3 million tonnes in 2024/25, with increased production forecast to be met with strong domestic and export demand," he said.

"Further price rises are expected for lamb, adding to gains in the first half of the year. Strong demand from both domestic and export consumers is expected to provide support for increased prices amidst a high supply environment."

Farm input costs are reported to be easing, says Mr Smith, despite remaining above long-term averages.

"Fertiliser and diesel prices will sit lower than the second half of 2023, with water set to remain affordable, too. A rising unemployment rate is also expected to result in greater seasonal labour availability, particularly in Q4, giving Australian farmers a bit of fixed price relief, all round."

## Lower Barrington Baptist Church

Sheffield Road, Lower Barrington  
All Welcome - Sundays 10am.  
1st Sunday – Holy Communion  
Kid's Church – weekly in term  
Men and Women's Bible study  
Enquiries: Steve – 0409 944 296



## Sheffield Baptist Church

*"Caring and Making a Difference in Our Community"*

**104-106 Main Street, Sheffield**  
Service Time 10:30am each Sunday  
All welcome – friendly atmosphere  
Fellowship Tea every third Sunday  
5:30pm - 7:30pm Favourite hymn singing, good food and fellowship  
**Ph: 6491 1150**

## CHURCH NOTICES

### Holy Cross Catholic Church

High Street Sheffield  
Mass is celebrated Sundays at 11.30am.  
All Welcome.  
Parish Office Ph 6424 2783



### Sheffield Uniting Church

*Home of Library Aid Int'l, Kentish U3A and Mountain Echoes Choir*



There are many ways for a church to serve the community. At present, we do not hold Sunday Worship. Instead, we invite you to join in a time of quiet reflection and prayer at an Ecumenical Service 8.30am on Mondays. We also offer a place for friends to meet, laugh and relax. Phone Leoni Read 0429 705 062. Corner of Main/Henry Street.

### Traditional Anglican Church

**For service information, please ring 6425 5605**

## Kentish Anglican Community Church St.Johns

Sunday 10am 92 Foster St, Railton  
Phone: 0408 140 189



## Roland Gospel Hall

Sunday Worship 10am - 11am  
Fellowship (Family Service) 11am-noon  
All Welcome.



## Sheffield Bible Chapel

45 High Street Sheffield  
*"A caring church for the whole family"*  
The Sheffield Bible Chapel conducts weekly services beginning 10am.  
Enquiries please phone 6491 1447  
Youth Group Enquiries, phone Joy Tekinay on 0428 666 494.

# WHAT'S ON IN AUGUST

		<b>For the Love of Birds by Nita Pountney</b> , Sheffield Art Gallery
Wednesday	Jul 31	<b>Women's Netball Team</b> information night 6pm, Sheffield School gym
Saturday	Aug 3	<b>Kentish Garden Club dahlia workshop</b> 1pm, Barrington Hall, 52 Barrington Road
Sat-Sun	Aug 3, 04	<b>Steam Engine rides</b> 11am-4pm, Sheffield Steam & Heritage Centre, 14 Spring Street
Monday	Aug 5	<b>Sheffield RSL Sub-branch meeting</b> 7pm Sheffield RSL, Main Street
Thursday	Aug 8	<b>Textile &amp; Craft</b> 3.30-5pm, Sheffield Library, 12 Henry Street
		<b>Kentish Garden Club AGM</b> 6.30pm, Sheffield Golf Club, 214 Nook Road, Sheffield
Saturday	Aug 10	<b>Railton Market</b> 9am-1pm, King's Hall, 10 Latrobe Road, Railton
		<b>Railton RSL Garage Sale</b> 10am-3pm, 52 Foster Street, Railton
Tuesday	Aug 13	<b>Kentish Probus Club</b> 10am, Sheffield Bowls Club
		<b>Battlescars</b> support group, 7-9pm, 58-60 High Street, Sheffield (see Page 10)
Friday	Aug 16	<b>Country to Canberra Leadership</b> competition applications close
Saturday	Aug 17	<b>The Laird of Lower Crackpot documentary</b> 6pm, Railton RSL, 52 Foster Street
Sunday	Aug 18	<b>Sheffield Show &amp; Shine</b> vintage cars & bikes 10am-3pm, Sheffield RSL carpark
		<b>Vietnam Veterans Day</b> 11am, Devonport RSL
Monday	Aug 19	<b>Trivia fundraiser for Lower Barrington community hall</b> 6.30pm for 7, Sheffield RSL
Tuesday	Aug 20	<b>Kentish Council meeting</b> 6pm, Council Office, High Street, Sheffield
Saturday	Aug 24	<b>Trivia fundraiser for Wilmot Community Hall</b> 6.30pm for 7pm (see Page 26)
Monday	Aug 26	<b>Scam Awareness &amp; Online Safety</b> 11.30am-1.30pm, Sheffield Uniting Church, Main St
Wednesday	Aug 28	<b>Services Australia</b> 9.30-11am, Sheffield; 12-12.30pm Railton
Thursday	Aug 29	<b>Sheffield Community Meeting</b> 7pm, Sheffield Town Hall, 66 High Street
Saturday	Aug 31	<b>Mr Perfect BBQ</b> 11am-12.30pm, Heath Park, Sheffield
		<b>Web of Life</b> exhibition opening 5pm, Sheffield Arts Centre
		<b>Rates due</b>
		<b>Large Community grants</b> applications close

# DATES FOR THE DIARY

Saturday	Sept 7	<b>Landscape painting workshop</b> with Helena Ambrosia 10am-4p, Sheffield Arts Centre
Thursday	Sept 12	<b>Kentish Men's Shed AGM</b> 10am, Spring Street, Sheffield
Saturday	Sept 14	<b>Wilmot Yarns</b> 7pm, Wilmot Town Hall
Thursday	Sept 26	<b>Railton Community Meeting</b> 7pm, King's Hall, Railton
Sun-Sat	Nov 3, 09	<b>Mural Fest 2024</b> , Mural Park, Sheffield

## Cryptic Puzzle Answers

- |                   |                |
|-------------------|----------------|
| 1. Corinna        | 6. Leven River |
| 2. Sarah Island   | 7. Truganini   |
| 3. East Devonport | 8. Kellevie    |
| 4. Somerset       | 9. Warringa    |
| 5. Mercury        | 10. Ouse       |

**HATCHES, MATCHES & DESPATCHES**  
photos & info to:  
[editor@thekentishvoice.com.au](mailto:editor@thekentishvoice.com.au)

**Crozzle Solution:  
MORE SURNAMERS**



**Why only** get a discount on your 4<sup>th</sup> tyre when  
**Railton Motor and Tyre**  
 will give you a great price on every tyre?

Ph 0417 511 681



TALK TO A DOCTOR IN 60 MINUTES • NATIONWIDE • 7 DAYS A WEEK

# SAVE THE EMERGENCY ROOM FOR EMERGENCIES

If you're looking for non emergency health care in Tasmania, call your local doctor.

Don't want to wait?  
 Use Medmate.



TALK TO A DOCTOR  
 TODAY FROM \$20

SCAN THE  
 QR CODE TO BOOK  
 AN APPOINTMENT



1300 858 909

MEDMATE.COM.AU

